

CERTIFIED LAND CORNER RESTORATION

Index No. R-S-17

4331127 3500 1978

FORM 985 H. C. MILLER CO., MILWAUKEE

State of Wisconsin }
County of Langlade } ss.

I Raymond J. Hallisy, do hereby certify that on the 8th day of April, 1978, I found evidence of the M.C. corner of Between 26, 27 Township 33, North, Range 11E, Fourth Principal Meridian, as described hereon; and that from this evidence I established a new monument and accessories as described hereon to perpetuate the original location of this corner.

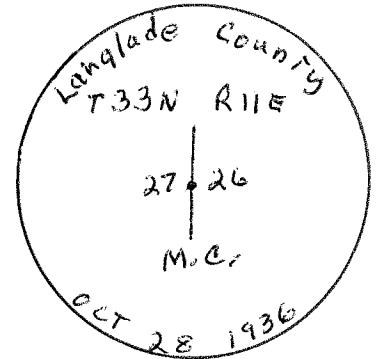
Resident witnesses:

History of original corner establishment:

Corner established in 1936 Resurvey

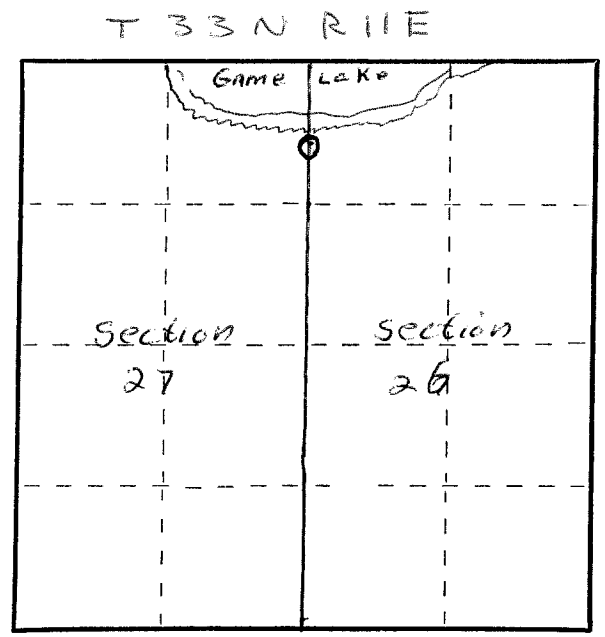
Description of corner evidence found:

4 inch IRON PIPE with Brass CAP
DARK GREY ROCK WITH X 540W 6' 3"



Description of monument and accessories I established to perpetuate the original location of this corner.

Hemlock 12" N68°E 7 FT. 4 inches
White Birch 7" S4°E 24 FT. 5 inches



○ = Corner monument restored.

Dated at Antigo, Wis., this 8th day of April, 1978

Signature Raymond J. Hallisy Title Registered Land Surveyor Registration No. 5685
(County Surveyor, Registered Land Surveyor, or other duly authorized official)

Office of Register of Deeds, County of _____, I hereby certify that the within instrument was filed in this office for record on the _____ day of _____, 19____ at _____ o'clock _____ M.

(Register of Deeds)
By _____ Deputy