

CERTIFIED LAND CORNER RESTORATION

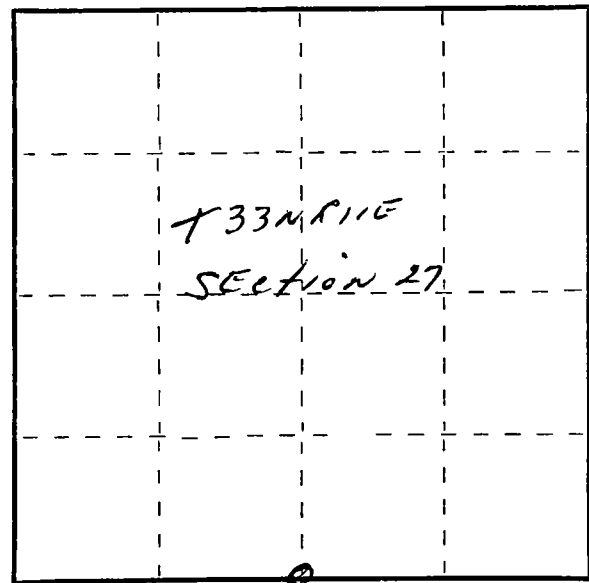
Index No. V-15

State of Wisconsin }  
County of Lanola } ss.

I Raymond J. Hallisy, do hereby certify that on the 18th day of June, 1977, I found evidence of the 1/4 corner of Section 27 & 34 Township 33, North, Range 11E, Fourth Principal Meridian, as described hereon; and that from this evidence I established a new monument and accessories as described hereon to perpetuate the original location of this corner.

Resident witnesses:

.....  
.....  
.....



○ = Corner monument restored.

History of original corner establishment:

Corner set in the 1930 resurvey.

Description of corner evidence found:

Found 4" pine with brass cap.

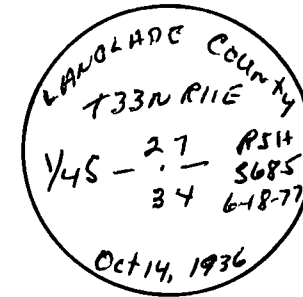
BT's

22" Elm N57W 18.3 Ft.  
18" Hard Maple N80E 26.5 Ft.

Description of monument and accessories I established to perpetuate the original location of this corner.

New BT's

7" Red Maple N19E 31 Ft.  
6" Hard Maple S15E 34 Ft.



Dated at Antigo, Wis., this 18th day of June, 1977

Signature Raymond J. Hallisy Title Land Surveyor Registration No. 5685  
(County Surveyor, Registered Land Surveyor, or other duly authorized official)

Office of Register of Deeds, County of....., I hereby certify that the within instrument was filed in this office for record on the..... day of....., 19..... at..... o'clock..... M.

.....  
(Register of Deeds)

By..... Deputy

FORM 985 H. E. MILLER CO. - MILWAUKEE