

CERTIFIED LAND CORNER RESTORATION

Index No. V-17  
33-

State of Wisconsin }  
County of Langlade } ss.

I Raymond J. Hallisy, do hereby certify that on the 8th day of April, 1978, I found evidence of the Section corner of 26, 27, 34, 35 Township 33, North, Range 11 E, Fourth Principal Meridian, as described hereon; and that from this evidence I established a new monument and accessories as described hereon to perpetuate the original location of this corner.

Resident witnesses:

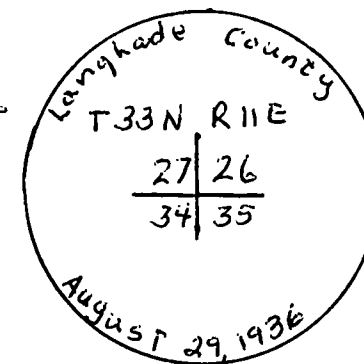
.....  
.....  
.....

History of original corner establishment:

Corner Established in 1936 Resurvey

Description of corner evidence found:

4 inch Brass cap on 4 inch Iron Pipe

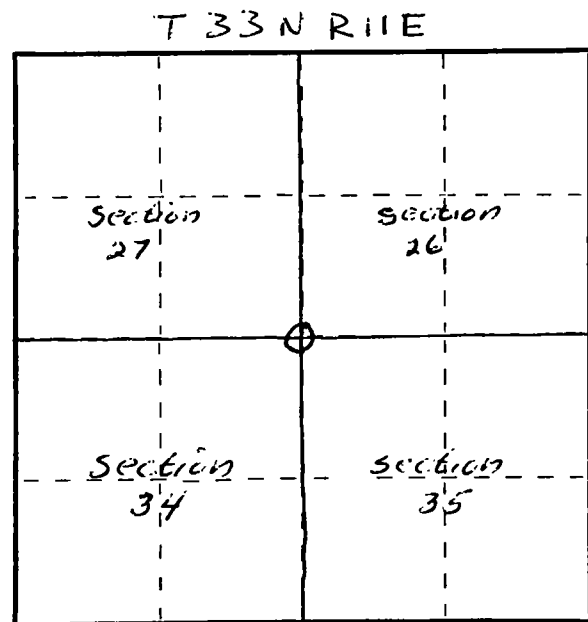


Description of monument and accessories I established to perpetuate the original location of this corner.

NEW B.T.S

- WHITE BIRCH 7" S53°E 14 FT. 10 inches
- Red MAPLE 6" S13°E 24 FT. 8 inches
- Red MAPLE 6" S50°W 18 FT. 3 inches

FORM 985 H. C. MILLER CO., MILWAUKEE



○ = Corner monument restored.

Dated at Antigo, Wis., this 8th day of April, 1978.

Signature Raymond J. Hallisy Title Registered Land Surveyor Registration No. 5685  
(County Surveyor, Registered Land Surveyor, or other duly authorized official)

Office of Register of Deeds, County of \_\_\_\_\_, I hereby certify that the within instrument was filed in this office for record on the \_\_\_\_\_ day of \_\_\_\_\_, 19\_\_\_\_ at \_\_\_\_\_ o'clock \_\_\_\_\_ M.

.....  
(Register of Deeds)

By \_\_\_\_\_ Deputy