

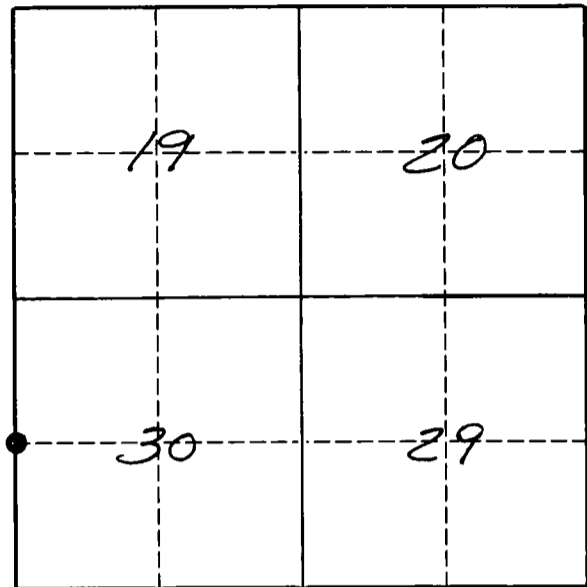
# U. S. PUBLIC LAND SURVEY MONUMENT RECORD

**INSTRUCTIONS:**

This record shall show the location of the corner and shall include all of the following nine elements (a through i).

- (a) Identify the corner by reference to the U.S. public land survey system.  
 ● = Corner monument restored.

The West Quarter corner of Section 30, Township 33 North, Range 12 East, Langlade County, Wisconsin.



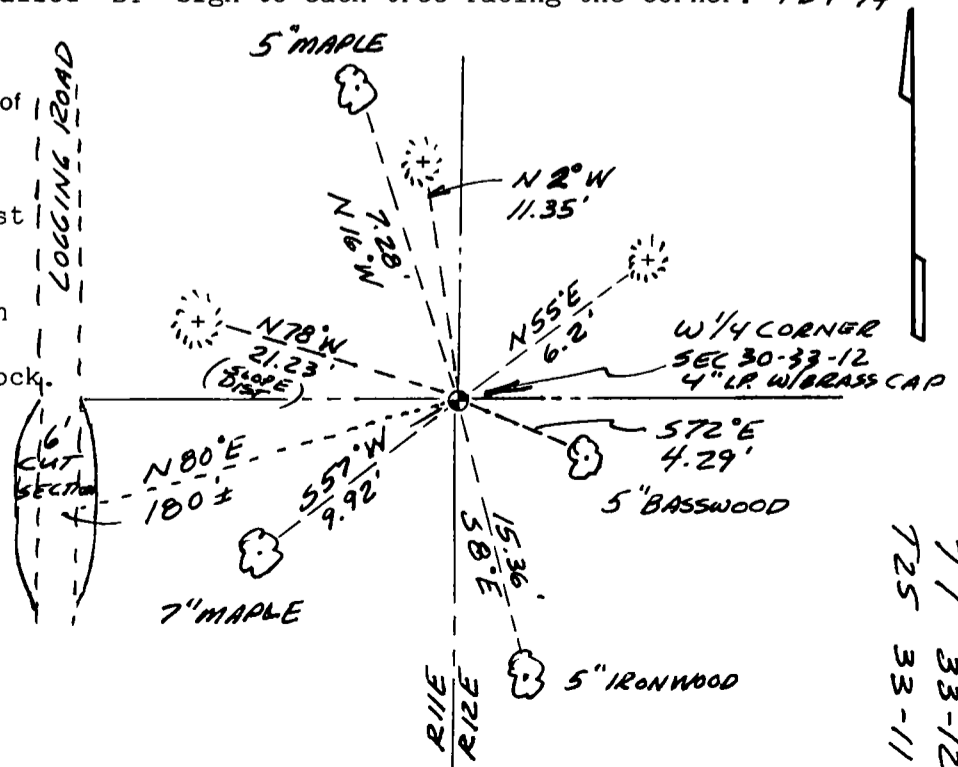
T. 33 N., R. 12 E.

- (b) Describe any record evidence, monument evidence, occupational evidence, testimonial evidence or any other material evidence you considered, and whether the monument was found or placed.  
 The original corner was established in 1857 by Alfred Millard. Original bearing trees: Sugar, 12", N45°W, 15 lks, and a Sugar, 10", S45°E, 17 lks. In the 1930's re-survey of part of T33N, R11E, pieces of and old scribed stake were found along with two old BT's by Hutchinson. BO's were marked: "+" on grey boulder, N81°W, 21.2'; "+" on light grey rock, N07¼°W, 11.5', and a "+" on a dark grey rock, N51°E, 6.1', and a 4" iron pipe with brass cap was set on 09-05-36. On 12/18/82, Ray Hallisy found the 4" iron pipe with brass cap and marked four BT's. On 05/06/94 I found the 4" iron pipe with brass cap leaning to the southeast. I straightened the pipe and made it firm in the ground. The top of the pipe is 14" above ground.

- (c) In the plan view drawing below, provide reference ties to at least 4 witness monuments, or, if the location is within a municipality, to at least 2 witness monuments. (Witness monuments shall be made of concrete, natural stone, iron or other equally durable material.)  
 Describe witness monuments.

☼ = existing BT marked with a low scribed (BT) blaze and a high blaze facing the corner.  
 I set an aluminum nail in a small blaze on left side of each tree and re-measured them as shown below. Nailed "BT" sign to each tree facing the corner. *FB4-74*

- (d) Show a plan view drawing depicting the relevant monuments and reference ties which is sufficient in detail to enable accurate relocation of the corner monument if the corner monument is disturbed. Indicate north.  
 Set a white vinyl sign post 2.0' north of the corner monument.  
 Bearings are magnetic with hand compass.  
 ☼ = Found chiseled "x" on rock. Painted blue.



*SKETCH NOT TO SCALE!*

T1 33-12  
T25 33-11

Describe any material discrepancy between the location of the corner as restored or reestablished and the location of that corner as previously restored or reestablished by distance and direction. Show the discrepancy on the plan view drawing under (d), above. Show the distances between the corner as previously restored or reestablished and (1) the corner as restored or reestablished, and (2) to at least 2 of the witness monuments shown on the drawing in (d), above.

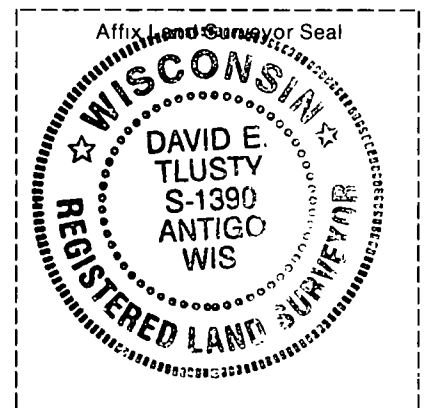
No discrepancy.

(f) Was the corner restored through acceptance of (1) an obliterated evidence location, or, (2) a found perpetuated location?  
A found perpetuated location.

(g & h) Was the corner reestablished through lost corner proportionate methods? If so, show the method, including the directions and distances to other public land survey corners used as evidence or used for proportioning in determining the corner location.

No.

(i) I, David E. Tlusty, Langlade County Surveyor,  
(type or print name)  
certify that the corner location shown on this record was determined by me or under my direction and control and that this U.S. Public Land Survey Monument Record is correct and complete to the best of my knowledge and belief.



David E. Tlusty  
Signature  
May 10, 1994  
Date

CERTIFIED LAND CORNER RESTORATION

Index No. T- /

33-12

State of Wisconsin }  
County of Lamplade } ss.

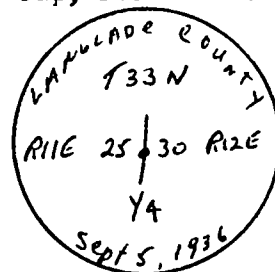
I, Raymond J. Hallisy, do hereby certify that on the 18th day of December, 1982, I found evidence of the 1/4 corner of Section 25 & 30 Township 33, North, Range 11E & 12E, Fourth Principal Meridian, as described hereon; and that from this evidence I established a new monument and accessories as described hereon to perpetuate the original location of this corner.

History of original corner establishment:

Corner set in the 1930 resurvey

Description of corner evidence found:

4" pipe with brass cap, rock mound.



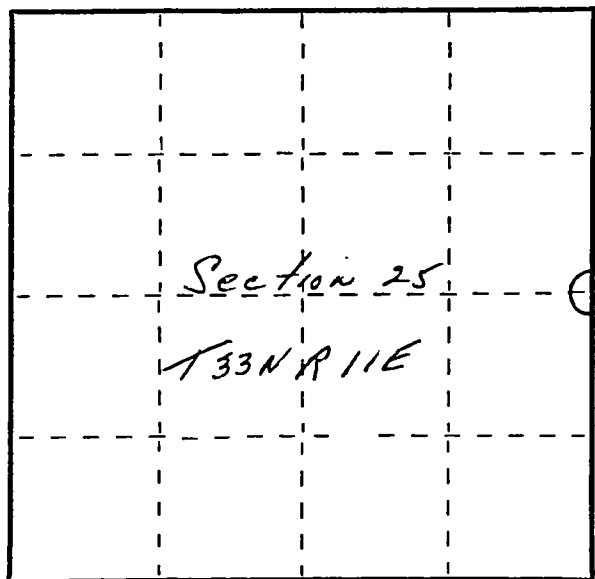
Description of monument and accessories I established to perpetuate the original location of this corner.

New BT's

5"	Ironwood	S10E	14.9'
6"	Hard Maple	S58W	9.8'
5"	Hard Maple	N20W	7.4'
5"	Basswood	S67E	3.7'

Resident witnesses:

.....  
.....  
.....



○ = Corner monument restored.

Dated at Antigo, Wis., this 18th day of December, 1982

Signature Raymond J. Hallisy Title Land Surveyor Registration No. S-585

(County Surveyor, Registered Land Surveyor, or other duly authorized official)

Office of Register of Deeds, County of \_\_\_\_\_, I hereby certify that the within instrument was filed in this office for record on the \_\_\_\_\_ day of \_\_\_\_\_, 19\_\_\_\_ at \_\_\_\_\_ o'clock \_\_\_\_\_ M.

(Register of Deeds)

By \_\_\_\_\_ Deputy

FORM 985 H. C. WILSON CO., MILWAUKEE