

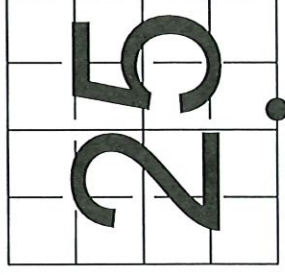
433125 0018 2023

# U S PUBLIC LAND SURVEY MONUMENT RECORD - ADDENDUM

NOTE: This form is intended and designed to fulfill all requirements of Wisconsin Administrative Code, Chapter A-E 7.08 U.S. Public Land Survey Monument Record (3) (a-f)

A-E 7.08(3)(a) Identity of corner:  
MEANDER CORNER ON THE SOUTH LINE  
SECTION 25, EAST SIDE OF PENCE LAKE,  
TOWNSHIP 33 NORTH,  
RANGE 11 EAST OF THE 4TH PM,  
TOWN OF UPHAM, COUNTY OF LANGLADE

WISCONSIN - LANGLADE COUNTY  
N: 400,788.593 USft (XXX,XXX.XXX)  
E: 644,097.641 USft (XXX,XXX.XXX)  
Datum: NAD83 (2011)  
GNSS Method RTK  
GNSS Control WISCORS VRS



The coordinate value shown has been verified by the average of two or more GPS observations at a markedly different time. Coordinates shown in parenthesis are previously published values.

A-E 7.08(3)(b)

Original Surveyor: Hiram C. Fellows

Date of Original Survey Completed: October 19, 1860  
October 26, 1860

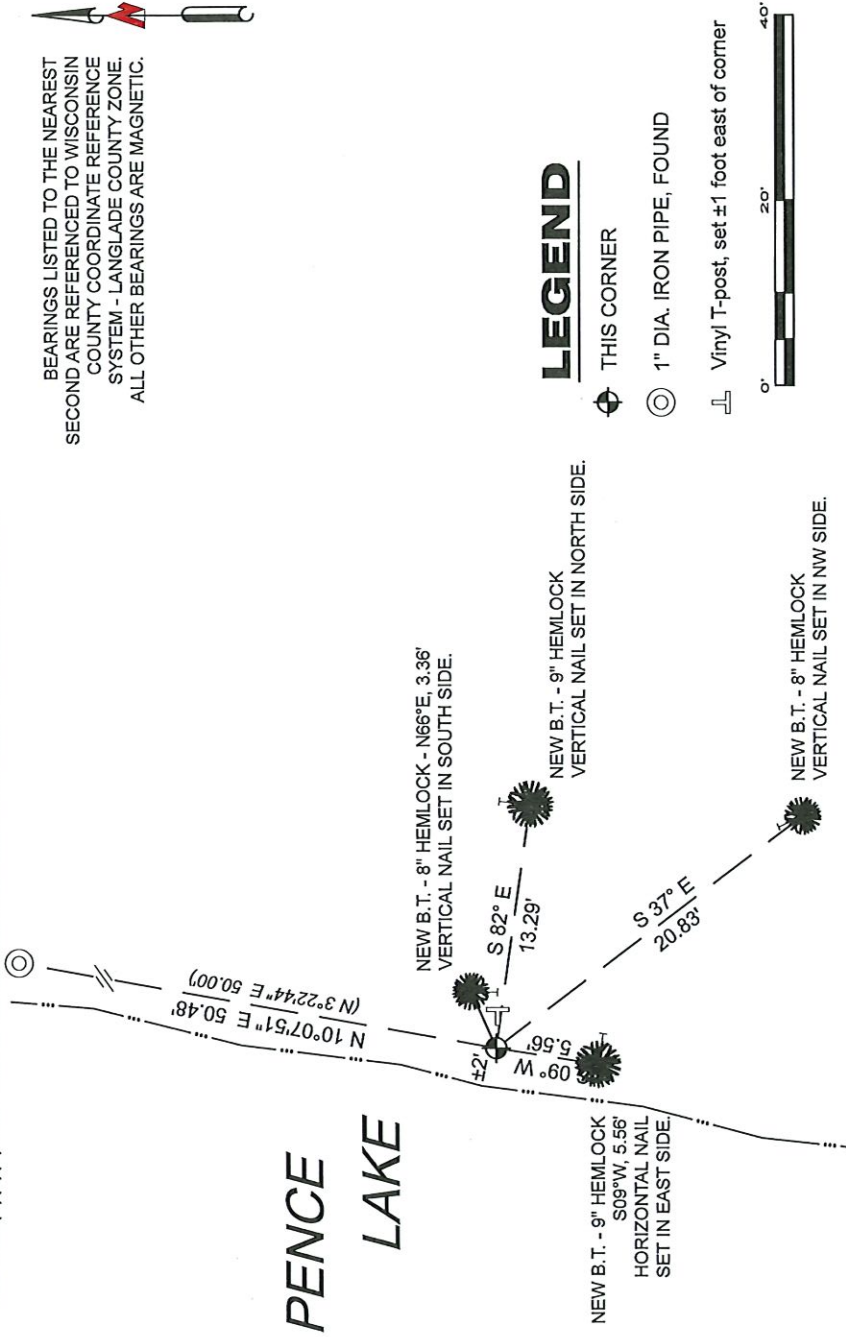
Original Accessories:  
Hemlock 16 N 5° W 4 Links  
Hemlock 12 S 45° E 28 Links

See previous Certified Land Corner Restoration - V-23-24 - August 28, 1976 - Surveyor 685 - Raymond J. Hallisy - THENCE:

November 10, 1987 - Surveyor 887 - Thomas R. Arnott - indicates this position as "brass capped monument found" on Langlade Co. Map 40434.  
August 22, 1988 - Surveyor 887 - Thomas R. Arnott - indicates this position as "concrete monument found" on Langlade Co. Certified Survey Map 282732.  
October 26, 1988 - Surveyor 887 - Thomas R. Arnott - indicates this position as "concrete monument found" on Langlade Co. Certified Survey Map 283523.  
June 17, 1989 - Surveyor 887 - Thomas R. Arnott - indicates this position as "concrete monument found" on Langlade Co. Certified Survey Map 284467.

August 7, 2023 - I found a 4" diameter iron pipe with a 4" diameter brass cap stamped to identify the corner position. The monument is in good condition. I established 4 new bearing trees as shown below.

A-E 7.08(3)(c)(d) Plan view of corner with references to at least 4 witness monuments.



BEARINGS LISTED TO THE NEAREST SECOND ARE REFERENCED TO WISCONSIN COUNTY COORDINATE REFERENCE SYSTEM - LANGLADE COUNTY ZONE. ALL OTHER BEARINGS ARE MAGNETIC.

## LEGEND

⊕ THIS CORNER

⊙ 1" DIA. IRON PIPE, FOUND

⌚ Vinyl T-post, set ±1 foot east of corner



A-E 7.08(3)(e) Certified Land Corner Restoration V-23-24 indicates a 4" brass cap on iron pipe. I found a 4" diameter iron pipe with a 4" diameter brass cap.

A-E 7.08(3)(f) I accept this monument as a FOUND PERPETUATED LOCATION of the corner.  
A-E 7.08(3)(g)(h) This corner was not determined through lost-corner-proportionate methods.

A-E 7.08(3)(i) I, Jeffrey L. DeMuth, Professional Land Surveyor No. S-2656, hereby certify that the corner location on this record was determined by me or under my direction and control, and that this U.S. Public Land Survey Monument Record is correct and complete to the best of my knowledge, and belief.



*Jeffrey L. DeMuth*  
\_\_\_\_\_  
DATE August 9, 2023

SIGNATURE

DATE

V 23-24 33-11

CERTIFIED LAND CORNER RESTORATION

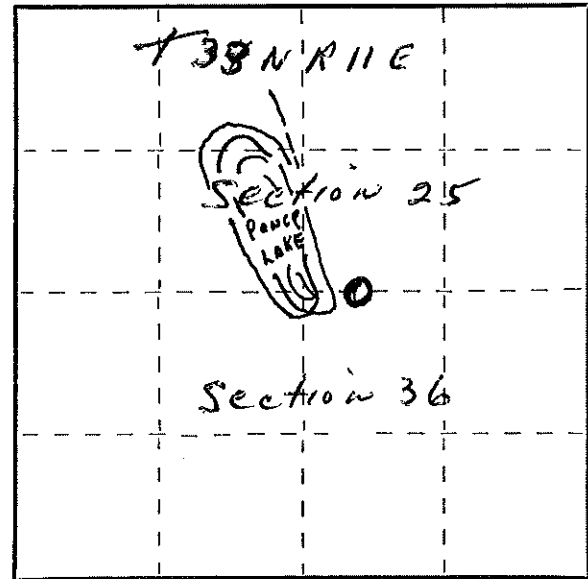
Index No. V-23-24

State of Wisconsin }  
County of Lançlade } ss.

I, Raymond S. Hallisy, do hereby certify that on the 28th day of August, 1976, I found evidence of the M.C. Between corner of Section 25 & Section 36 Township 33, North, Range 11 E, Fourth Principal Meridian, as described hereon; and that from this evidence I established a new monument and accessories as described hereon to perpetuate the original location of this corner.

Resident witnesses:

.....  
.....  
.....



○ = Corner monument restored.

History of original corner establishment:

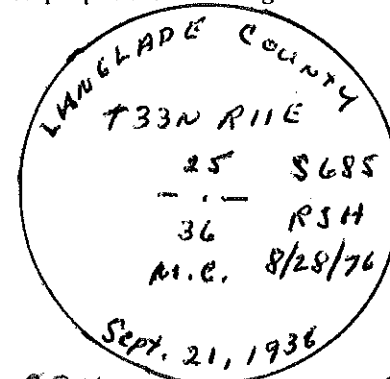
Set in Sept. 21, 1936

Description of corner evidence found:

4" BRASS CAP ON IRON PIPE  
OLD BT. ON EAST shore of Pence Lake  
12" Hemlock S1° W 15.4 FT.

Description of monument and accessories I established to perpetuate the original location of this corner.

New BT's  
10" Hemlock NS1E 24 FT.  
10" Hemlock S2SE 22.7 FT



Dated at Antigo, Wis., this 28th day of August, 1976.

Signature Raymond S. Hallisy Title Dep Land Surveyor Registration No. 5685  
(County Surveyor, Registered Land Surveyor or other duly authorized official)

Office of Register of Deeds, County of \_\_\_\_\_, I hereby certify that the within instrument was filed in this office for record on the \_\_\_\_\_ day of \_\_\_\_\_, 19\_\_\_\_ at \_\_\_\_\_ o'clock \_\_\_\_\_ M.

.....  
(Register of Deeds)

By \_\_\_\_\_ Deputy