

CERTIFIED LAND CORNER RESTORATION

Index No. R-8
33-11

State of Wisconsin }
County of Lanlade } ss.

I Raymond J. Hallisy, do hereby certify that on the 11th day of July, 1979, I found evidence of the E 1/16 corner of Section 20 & 29 Township 33, North, Range 11E, Fourth Principal Meridian, as described hereon; and that from this evidence I established a new monument and accessories as described hereon to perpetuate the original location of this corner.

History of original corner establishment:

Corner set in the 1930 resurvey.

Description of corner evidence found:

Found wood post down, rock mound, point intact.

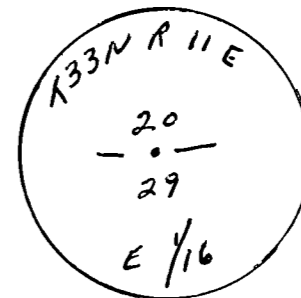
Resident witnesses:

.....
.....
.....

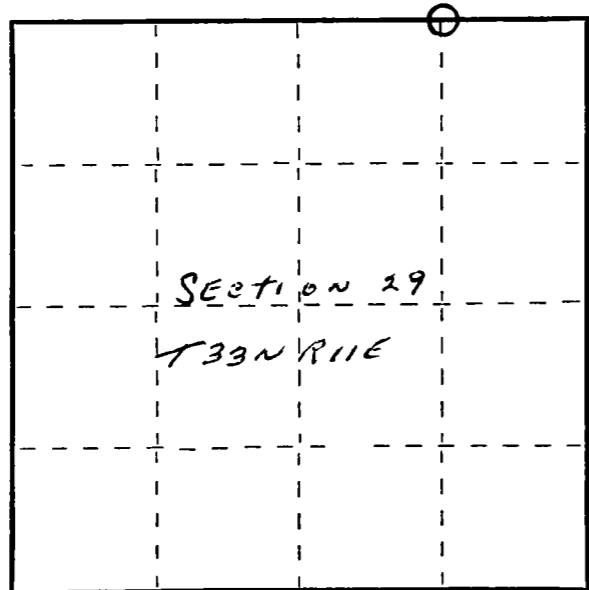
Description of monument and accessories I established to perpetuate the original location of this corner.

Set 1 1/2" pipe with brass cap.
New BT's

6" Twin Hard Maple S24E 21' 5"
4" Hard Maple N79W 7' 7"
4" Hard Maple N10E 5' 2"



FORM 985 M. C. MILLER CO., MILWAUKEE



○ = Corner monument restored.

Dated at Antigo, Wis., this 11th day of July, 1979.

Signature Raymond J. Hallisy Title Reg. Surveyor Registration No. S685
(County Surveyor, Registered Land Surveyor, or other duly authorized official)

Office of Register of Deeds, County of....., I hereby certify that the within instrument was filed in this office for record on the..... day of....., 19..... at..... o'clock..... M.

.....
(Register of Deeds)

By..... Deputy