

CERTIFIED LAND CORNER RESTORATION

33-1
Index No. 0-5

State of Wisconsin }
County of Langlade } ss.

History of original corner establishment:

I Raymond J. Hallisy, do hereby certify that on the 29th day of May, 19 68, I found evidence of the N 1/16 corner of Section 19 Township 33, North, Range 11, Fourth, Principal Meridian, as described hercon; and that from this evidence I established a new monument and accessories as described hereon to perpetuate the original location of this corner.

Corner set in the 1930's by: E. F. Kowalke
C. W. Borth

Description of corner evidence found:

Found squared stake standing.
Stake marked N 1/8 S19 S20

{ SEE NOTE ON REVERSE }

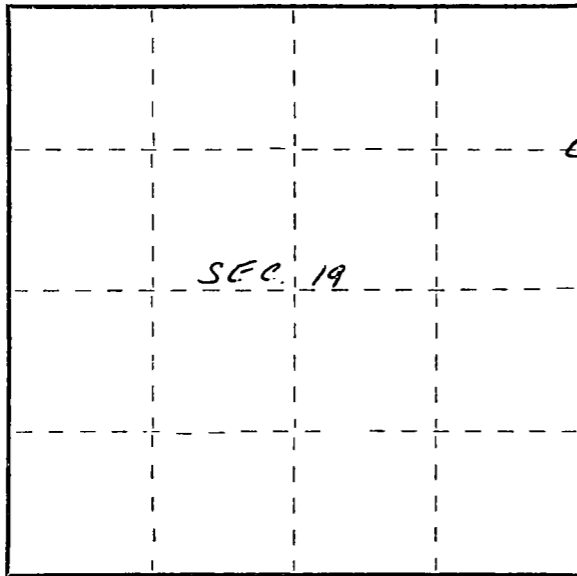
Resident witnesses:

.....
.....
.....

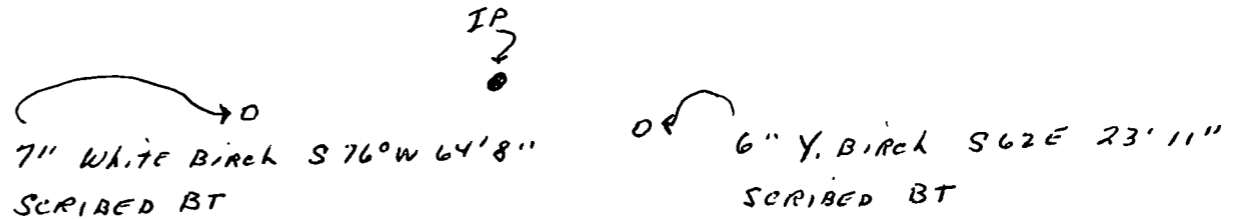
Description of monument and accessories I established to perpetuate the original location of this corner.

Set Std. 1 1/2" pipe with cap marked N 1/16 19 20

FORM 985 H. C. MILLER CO., MILWAUKEE



○ = Corner monument restored.



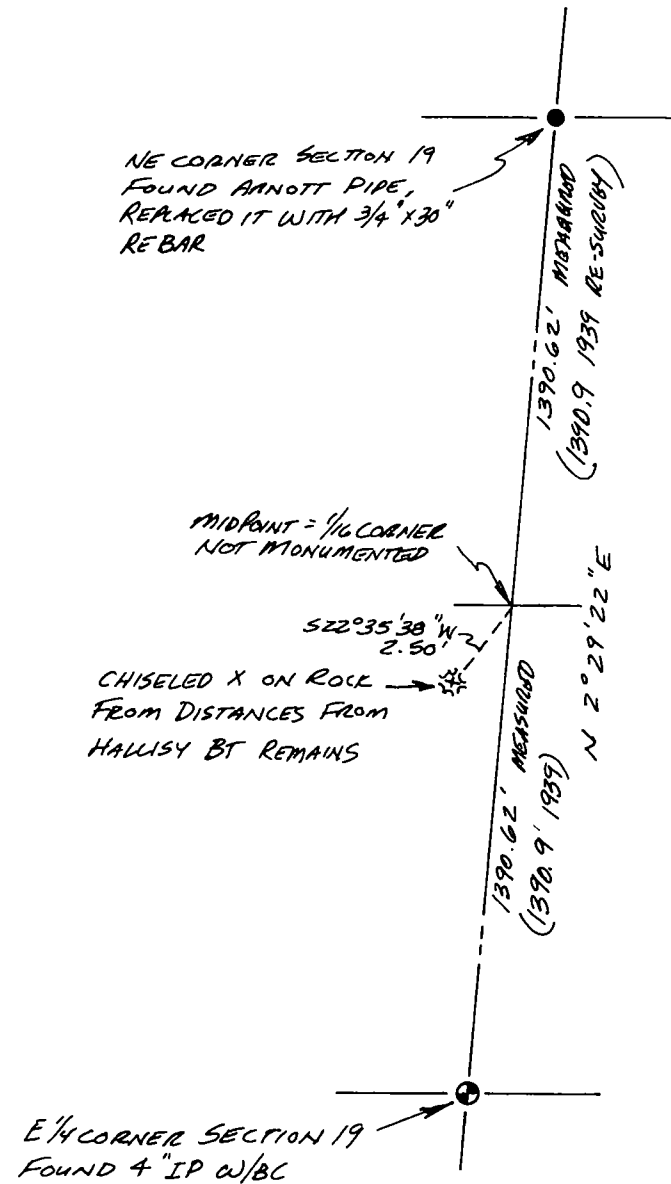
Dated at Antigo, Wis., this 29th day of May, 19 68

Signature Raymond J. Hallisy Title Reg. Land Surveyor Registration No. S-685
(County Surveyor, Registered Land Surveyor, or other duly authorized official)

Office of Register of Deeds, County of _____, I hereby certify that the within instrument was filed in this office for record on the _____ day of _____, 19 _____ at _____ o'clock _____ M.

.....
(Register of Deeds)

By _____ Deputy



8/27/96 D. TLUSTY
NOTE: N 1/16 519-520

BECAUSE BOTH OF HALLISY'S
BT'S ARE QUESTIONABLE AS
TO THE EXACT MEASURING
POINT (SW TREE BLAZE GROWN
SHUT & THEN TREE WAS CUT;
SE TREE IS ROTTEN STUB LEANING)
& BECAUSE THE MONUMENT
MARKING THE CORNER IS LOST
DUE TO DRIVEWAY CONSTRUCTION,
THE BEST LOCATION FOR THIS 1/16 CORNER
IS AT MIDPOINT BETWEEN THE
NE & E 1/4 COR'S. OF SECTION 19.
WHEREAS THIS 1/16 CORNER WAS NOT
NEEDED FOR THE CURRENT SURVEY
PROJECT IN SECTION 20, IT WAS
NOT MONUMENTED AT THIS TIME.

D. TLUSTY
8/27/96