

CERTIFIED LAND CORNER RESTORATION

33-11
Index No. N-2

State of Wisconsin }
County of Langlade } ss.

History of original corner establishment:

Corner Set in the 1930's by: **E. F. Kowalke**
C. W. Borth

I Raymond J. Hallisy, do hereby certify that on the 29th day of May, 1968, I found evidence of the W 1/16 corner of Section 19 Township 33, North, Range 11, Fourth, Principal Meridian, as described hereon; and that from this evidence I established a new monument and accessories as described hereon to perpetuate the original location of this corner.

Description of corner evidence found:

Found squared stake and rock mound.
Stake marked W. C. C. 1 1/2 Rds. N.

Resident witnesses:

.....
.....
.....

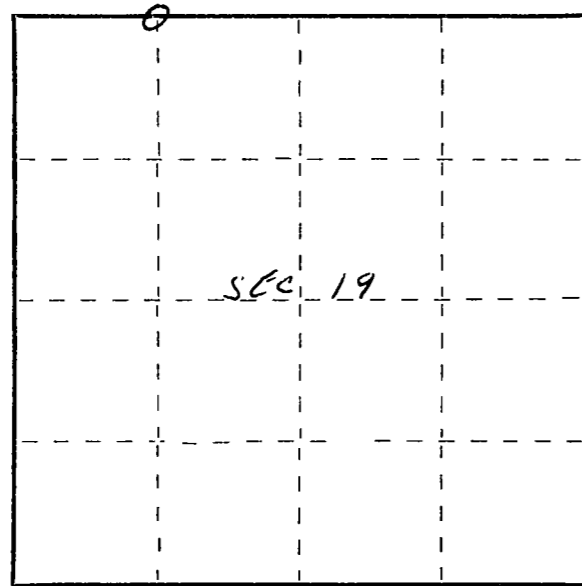
Description of monument and accessories I established to perpetuate the original location of this corner.
Set Std. 1 1/2" pipe with cap marked W. C. C. 1 1/2 Rds. N. W 1/16 Rock mound.
B T's witness the true corner.

↙
O 11" ELM N 27° E 30' 6"
SCRIBED BT

=====

IP →

OR 6" TAMARACK S 13° E 42' 1"
SCRIBED BT



Dated at Antigo, Wis., this 29th day of May, 1968

Signature Raymond J. Hallisy Title Reg. Land Surveyor Registration No. S-685
(County Surveyor, Registered Land Surveyor, or other duly authorized official)

Office of Register of Deeds, County of _____, I hereby certify that the within instrument was filed in this office for record on the _____ day of _____, 19____ at _____ o'clock _____ M.

.....
(Register of Deeds)

By..... Deputy

○ = Corner monument restored.

FORM 985 H. C. MILLER CO., MILWAUKEE