

U. S. PUBLIC LAND SURVEY MONUMENT RECORD

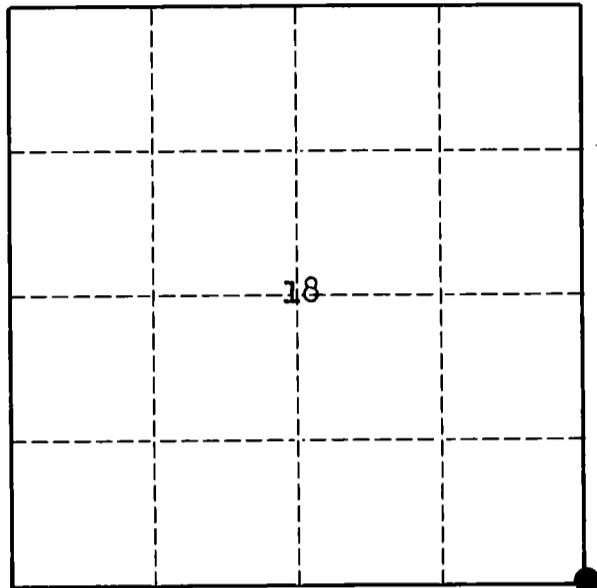
INSTRUCTIONS

This record shall show the location of the corner and shall include all of the following nine elements (a through i).

- (a) Identify the corner by reference to the U.S. public land survey system.
 O = Corner monument restored.

Sec. Cor. 17, 18, 19 and 20

T33N, R11E



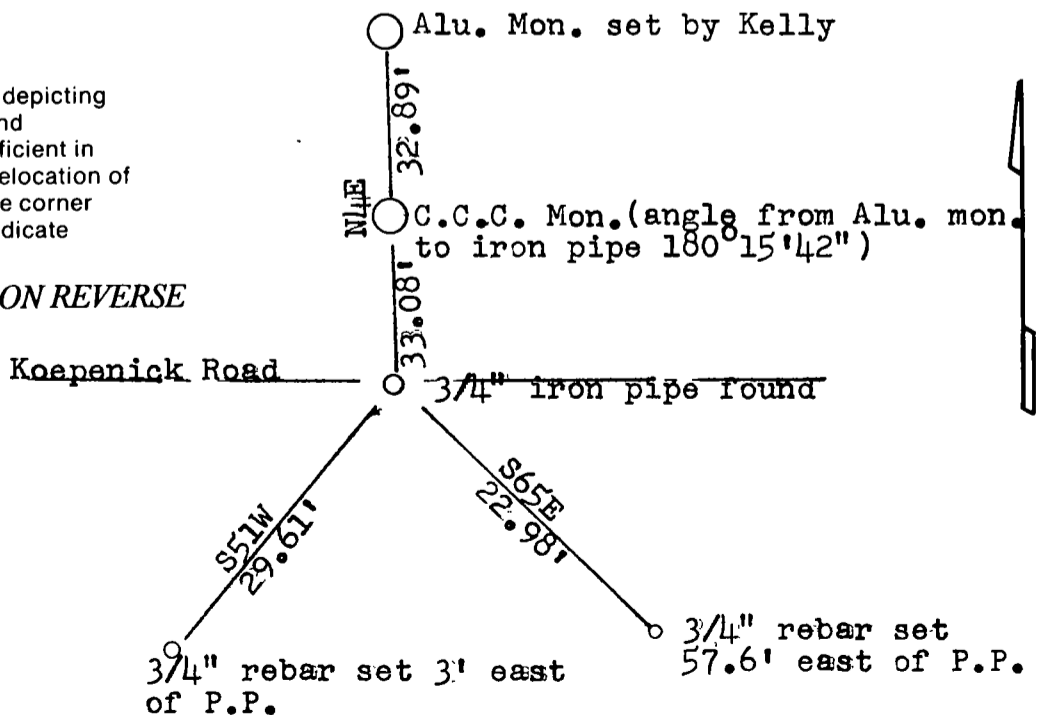
- (b) Describe any record evidence, monument evidence, occupational evidence, testimonial evidence or any other material evidence you considered, and whether the monument was found or placed.

Found a 3/4 in. iron pipe in the middle of Koepenick Road and a C.C.C. monument on the north side of the road. Pipe set by Kelly and is 1 foot long. Looked for other ties by the C.C.C. crew but none were left.

- (c) In the plan view drawing below, provide reference ties to at least 4 witness monuments, or, if the location is within a municipality, to at least 2 witness monuments. (Witness monuments shall be made of concrete, natural stone, iron or other equally durable material.) Describe witness monuments.

- (d) Show a plan view drawing depicting the relevant monuments and reference ties which is sufficient in detail to enable accurate relocation of the corner monument if the corner monument is disturbed. Indicate north.

SEE NOTE ON REVERSE



N/S

Describe any material discrepancy between the location of the corner as restored or reestablished and the location of that corner as previously restored or reestablished by distance and direction. Show the discrepancy on the plan view drawing under (d), above. Show the distances between the corner as previously restored or reestablished and (1) the corner as restored or reestablished, and (2) to at least 2 of the witness monuments shown on the drawing in (d), above.

N/A

(f) Was the corner restored through acceptance of (1) an obliterated evidence location, or, (2) a found perpetuated location.?

No. 2

(g & h) Was the corner reestablished through lost corner proportionate methods? If so, show the method, including the directions and distances to other public land survey corners used as evidence or used for proportioning in determining the corner location.

No

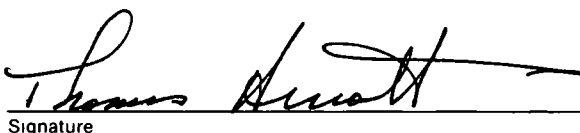
NOTE:

07/24/96 Dave Tlusty, found Arnotts' iron pipe. Set two short ties: small nail, South, 2.01' and West, 2.00'. Removed pipe to search for 1 1/8" iron rod set in 1936. Didn't find anything. Searched for + on large rock, N 25° W, 24.4' as per 1936 re-survey notes. This BO rock was apparently dug out when road ditch was built. Accepted position as previously described by Arnott as the best evidence of the 1936 corner position. In place of Arnotts pipe, I set a 3/4" x 30" re-bar for the corner.



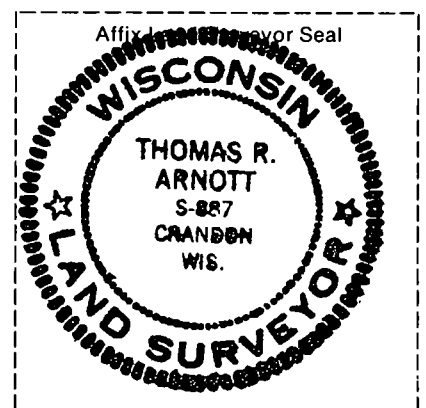
(i) I, Thomas Arnott S-887
(type or print name)

certify that the corner location shown on this record was determined by me or under my direction and control and that this U.S. Public Land Survey Monument Record is correct and complete to the best of my knowledge and belief



Signature

16 Sept 1992
Date



CERTIFIED LAND CORNER RESTORATION

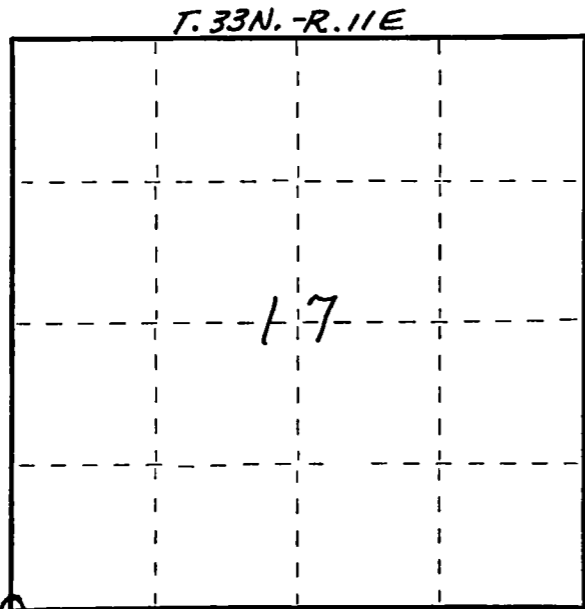
Index No. N-5

State of Wisconsin }
 County of LANGLADE } ss.

I, WILLIAM F. KELLY, do hereby certify that on the 29TH day of MARCH, 1977, I found evidence of the SECTION corner of SECTIONS 18, 17, 19 & 20 Township 33, North, Range 11E, Fourth Principal Meridian, as described hereon; and that from this evidence I established a new monument and accessories as described hereon to perpetuate the original location of this corner.

Resident witnesses:

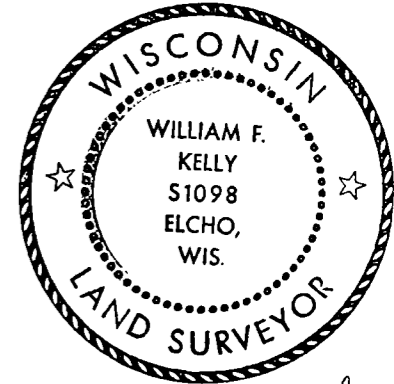
FORM 985 H. C. MILLER CO., MILWAUKEE



O = Corner monument restored.

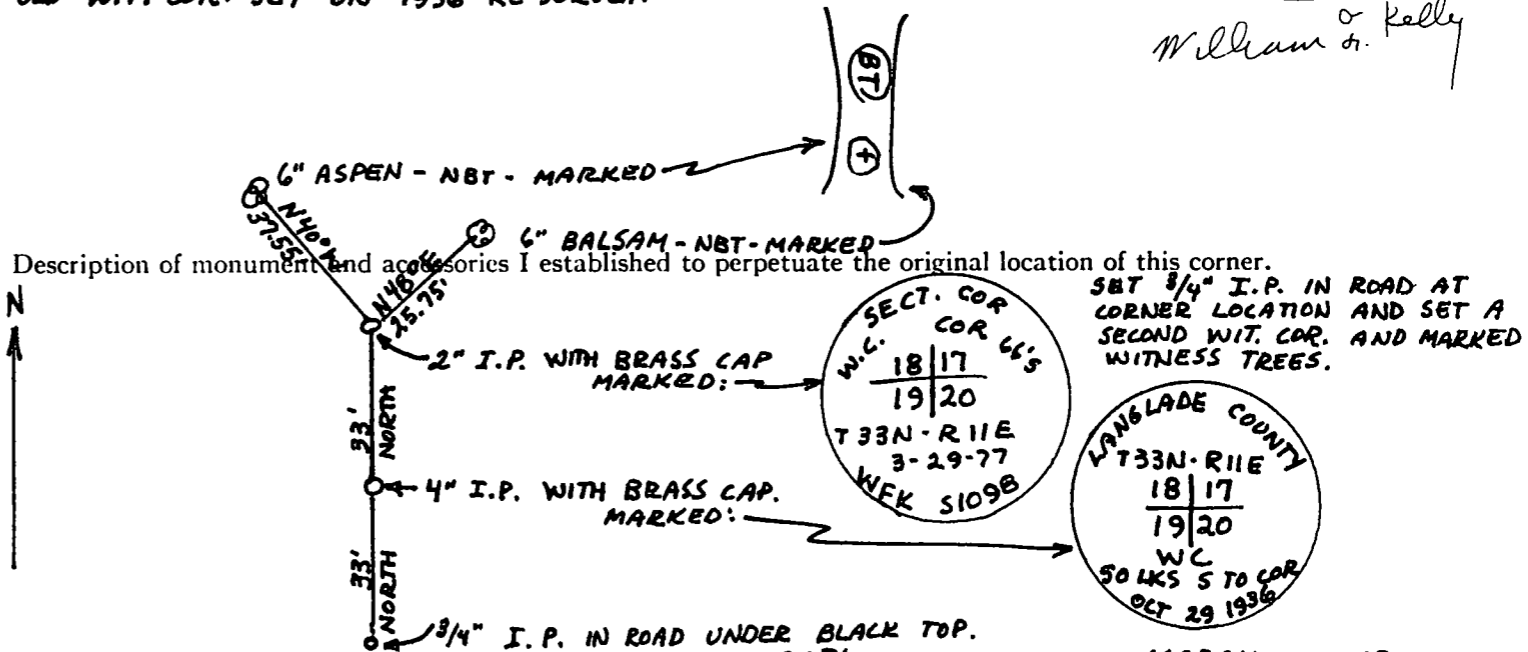
History of original corner establishment:

Description of corner evidence found:
LOCATED WITNESS CORNER TO SECTION COR. 18/17
19/20
OLD WIT. COR. SET ON 1936 RE-SURVEY.



William F. Kelly

Description of monument and accessories I established to perpetuate the original location of this corner.
 SET 3/4" I.P. IN ROAD AT CORNER LOCATION AND SET A SECOND WIT. CAR. AND MARKED WITNESS TREES.



Dated at ELCHO, Wis., this 29TH day of MARCH, 1977

Signature William F. Kelly Title REGISTERED LAND SURVEYOR Registration No. 51098
 (County Surveyor, Registered Land Surveyor, or other duly authorized official)

Office of Register of Deeds, County of, I hereby certify that the within instrument was filed in this office for record on the day of, 19..... at o'clock M.

(Register of Deeds)

By Deputy