

# U. S. PUBLIC LAND SURVEY MONUMENT RECORD

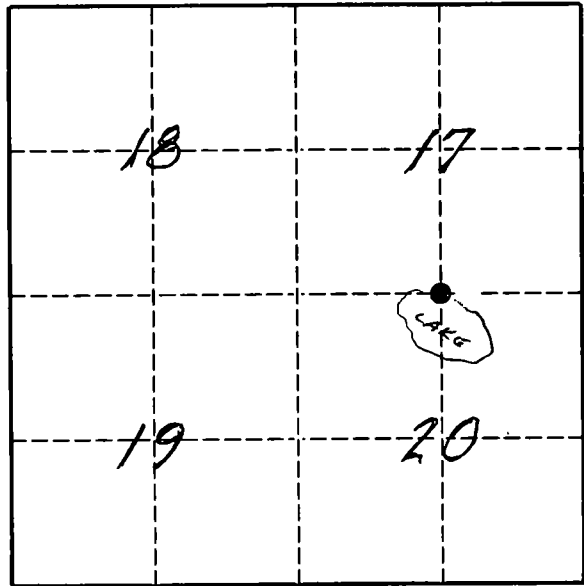
**INSTRUCTIONS:**

This record shall show the location of the corner and shall include all of the following nine elements (a through i).

- (a) Identify the corner by reference to the U.S. public land survey system.

● = Corner monument restored.

The South 1/4 corner of Section 17, Township 33 North, Range 11 East, Langlade County, Wisconsin.



T. 33 N., R. 11 E.

- (b) Describe any record evidence, monument evidence, occupational evidence, testimonial evidence or any other material evidence you considered, and whether the monument was found or placed.

This corner was not established in the original government survey. The 1930's re-survey set a 1 1/8" x 26" iron rod for this corner, 22' west of the MC. 07/24/96 Dave Tlusty found 1 1/8" iron rod for corner, 21.98' west of MC. Found iron pipe (1") SW, 2.6' from the 1/4 corner, as described in the 1930's notes. The corner is 1' SE of a power pole guy wire anchor. Set vinyl sign post 1' north of corner.

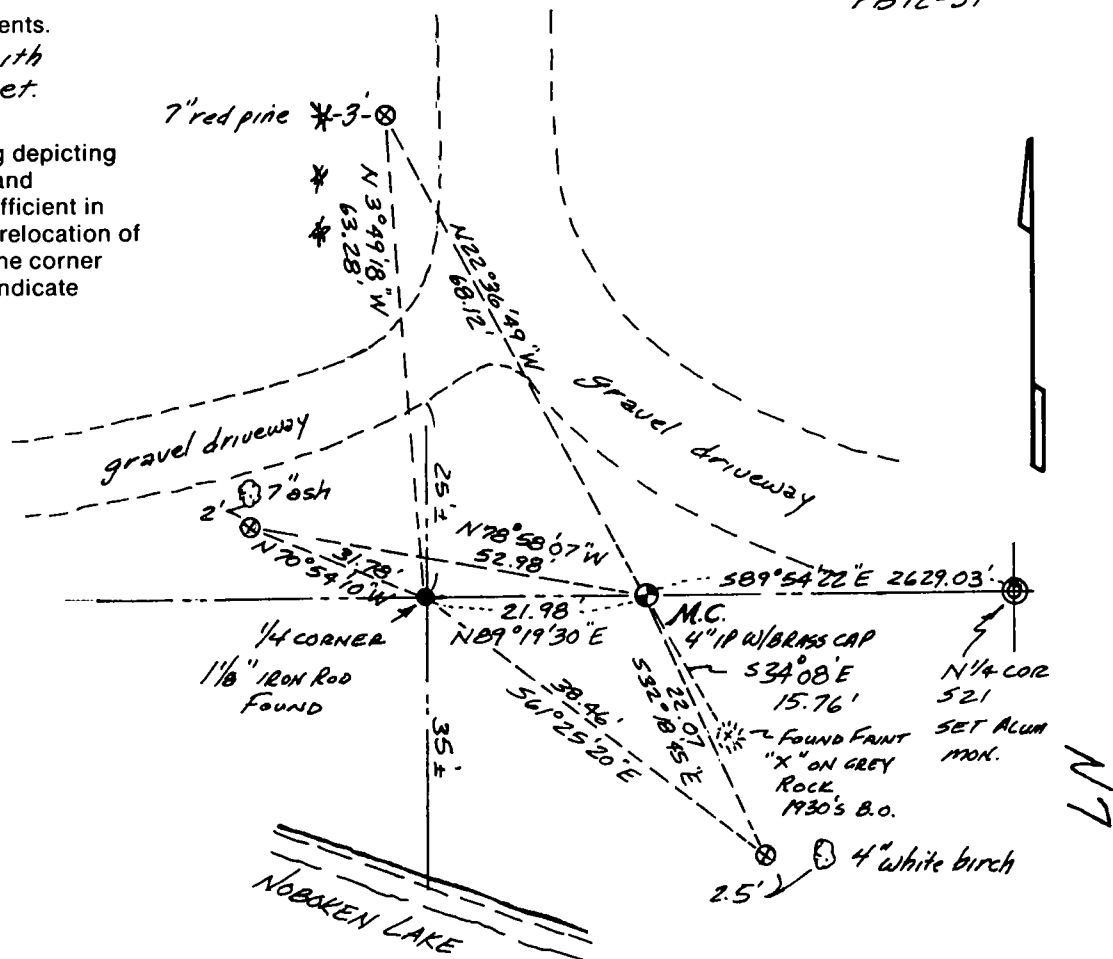
- (c) In the plan view drawing below, provide reference ties to at least 4 witness monuments, or, if the location is within a municipality, to at least 2 witness monuments. (Witness monuments shall be made of concrete, natural stone, iron or other equally durable material.)

Describe witness monuments.

⊗ = 3/4" x 30" re-bar with red plastic cap set.

FB 12-39

- (d) Show a plan view drawing depicting the relevant monuments and reference ties which is sufficient in detail to enable accurate relocation of the corner monument if the corner monument is disturbed. Indicate north.



Describe any material discrepancy between the location of the corner as restored or reestablished and the location of that corner as previously restored or reestablished by distance and direction. Show the discrepancy on the plan view drawing under (d), above. Show the distances between the corner as previously restored or reestablished and (1) the corner as restored or reestablished, and (2) to at least 2 of the witness monuments shown on the drawing in (d), above.

No discrepancy. Note: The original government survey notes indicate that this corner was in water and not set. The iron rod found is approximately 35 feet north of the waters edge of Noboken Lake, and it is on the edge of a bank that is approximately 10' to 15' above the lake.

(f) Was the corner restored through acceptance of (1) an obliterated evidence location, or, (2) a found perpetuated location?  
A found perpetuated location.

(g & h) Was the corner reestablished through lost corner proportionate methods? If so, show the method, including the directions and distances to other public land survey corners used as evidence or used for proportioning in determining the corner location.  
No.

(i) I, David E. Tlusty, Langlade County Surveyor,  
(type or print name)

certify that the corner location shown on this record was determined by me or under my direction and control and that this U.S Public Land Survey Monument Record is correct and complete to the best of my knowledge and belief.



David E. Tlusty                      9/9/96  
Signature    Date