

CERTIFIED LAND CORNER RESTORATION

33-11

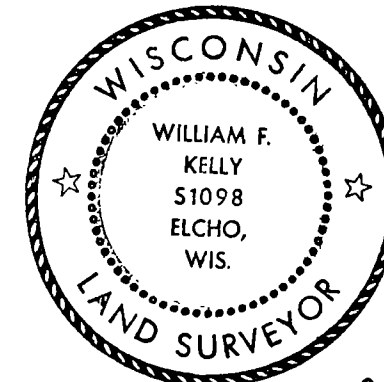
Index No. N-7-8

State of Wisconsin }  
County of LANGLEADE } ss.

History of original corner establishment:

I W<sup>M</sup> F. KELLY, do hereby certify that on the 18<sup>TH</sup> day of MAY, 1974, I found evidence of the MEANDER corner of SECS. 17 & 20 Township 33 North, Range 11 EAST, Fourth Principal Meridian, as described hereon; and that from this evidence I established a new monument and accessories as described hereon to perpetuate the original location of this corner.

SET BY KOWALKE IN 1936 SURVEY.  
Description of corner evidence found:  
BRASS CAP MKD. AS BELOW.

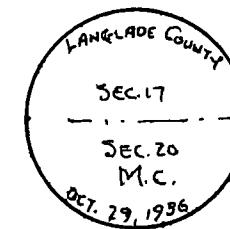
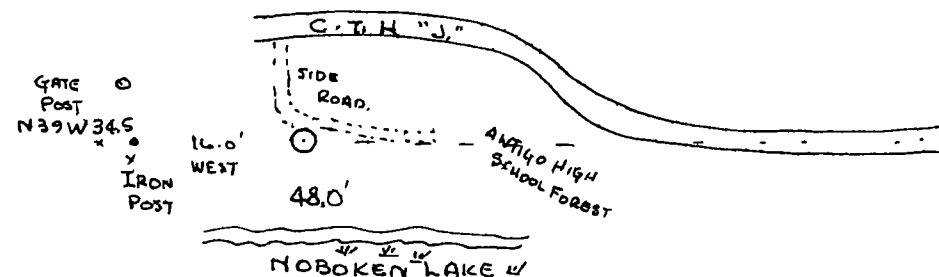
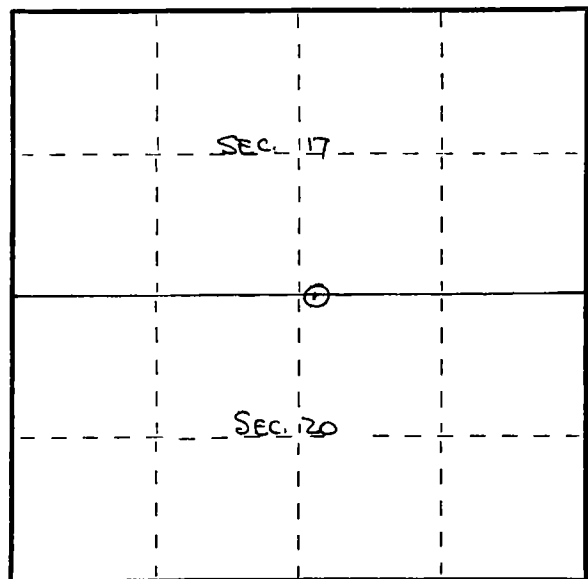


William F. Kelly

Resident witnesses:

ROBERT J. FOSS

Description of monument and accessories I established to perpetuate the original location of this corner.



Dated at ELCHO, Wis., this 18<sup>TH</sup> day of MAY, 1974.

Signature William F. Kelly Title REG. LAND SURVEYOR Registration No. S-1098  
(County Surveyor, Registered Land Surveyor, or other duly authorized official)

Office of Register of Deeds, County of \_\_\_\_\_, I hereby certify that the within instrument was filed in this office for record on the \_\_\_\_\_ day of \_\_\_\_\_, 19\_\_\_\_ at \_\_\_\_\_ o'clock \_\_\_\_\_ M.

(Register of Deeds)

By \_\_\_\_\_ Deputy

○ = Corner monument restored.

# U. S. PUBLIC LAND SURVEY MONUMENT RECORD

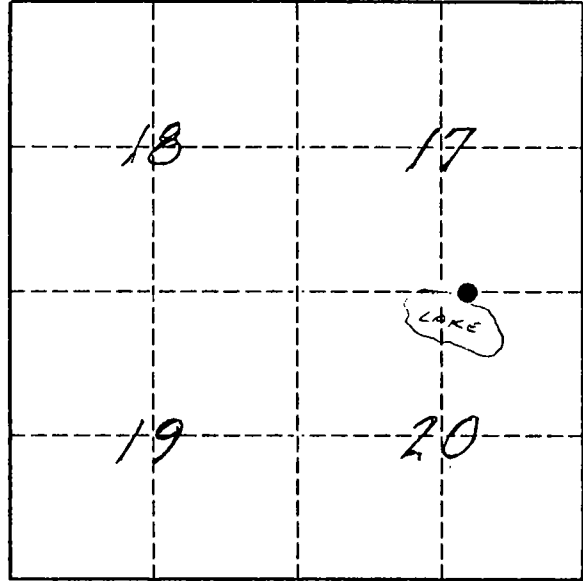
**INSTRUCTIONS:**

This record shall show the location of the corner and shall include all of the following nine elements (a through i).

- (a) Identify the corner by reference to the U.S. public land survey system.

● = Corner monument restored

The East meander corner on Noboken Lake on the South line of Section 17, Township 33 North, Range 11 East, Langlade County, Wisconsin.



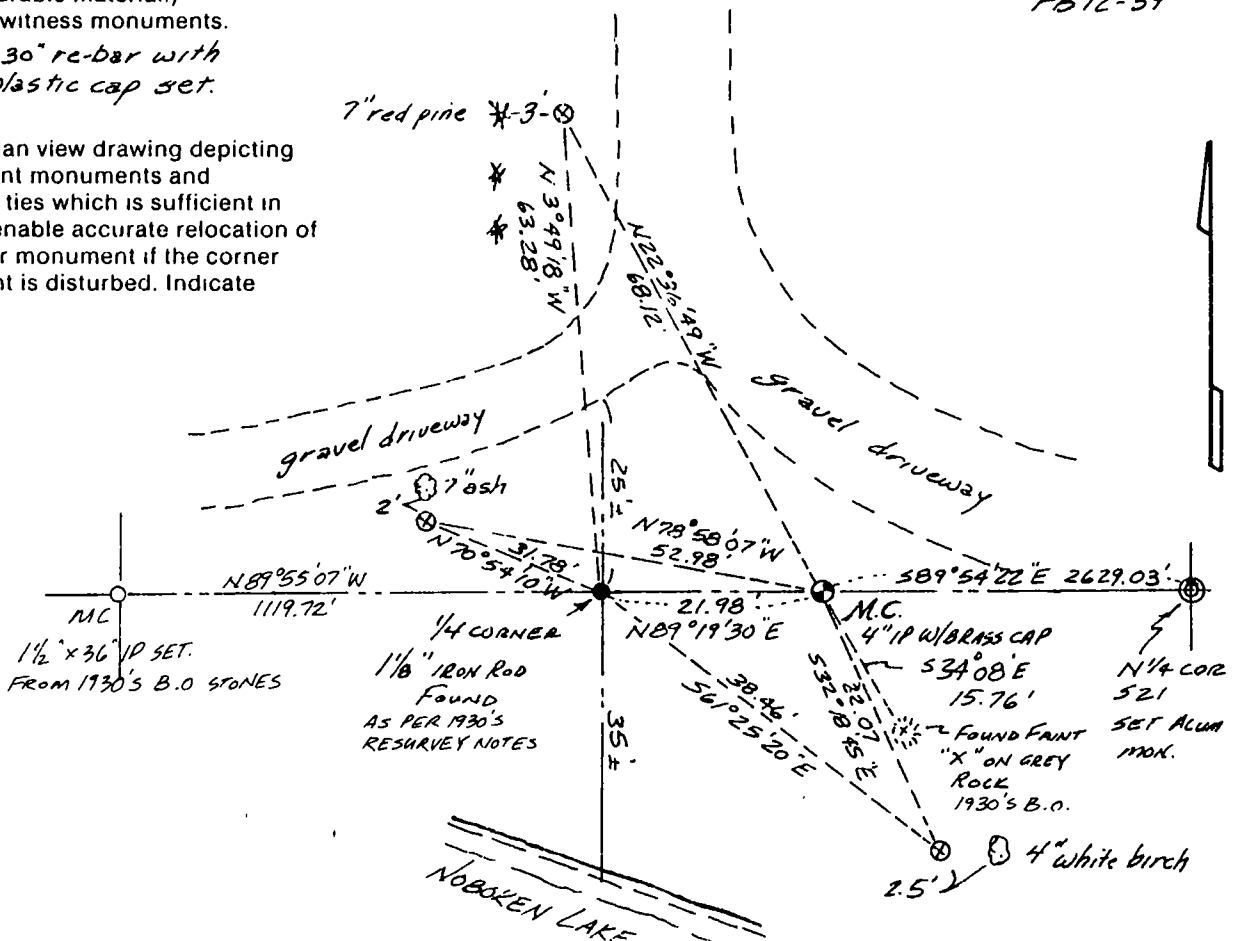
T. 33 N., R. 11 E.

- (b) Describe any record evidence, monument evidence, occupational evidence, testimonial evidence or any other material evidence you considered, and whether the monument was found or placed. The original corner was established in 1860 by Hiram C. Fellows. Original BT's: W. pine, 20", S65°E, 6 lks., and W. pine, 20", N82°W, 31 lks. The 1930's re-survey established the corner and set an iron pipe with brass cap. Marked BO's: + on dark grey rock, S37°E, 15.5' and + on E. edge grey rock, N86½°W, 15.3'. In 1974, former surveyor Kelly found 1930's brass capped iron pipe 16' east of iron (fence) post. 07/24/96 Dave Tlusty found 4" iron pipe with brass cap, 16' east of 6" concrete filled iron fence post. Nailed BT sign to 2" popple tree, 1' NW of corner.

- (c) In the plan view drawing below, provide reference ties to at least 4 witness monuments, or, if the location is within a municipality, to at least 2 witness monuments. (Witness monuments shall be made of concrete, natural stone, iron or other equally durable material.) Describe witness monuments.

⊗ = 3/4" x 30" re-bar with red plastic cap set.

- (d) Show a plan view drawing depicting the relevant monuments and reference ties which is sufficient in detail to enable accurate relocation of the corner monument if the corner monument is disturbed. Indicate north.



N7-8

Describe any material discrepancy between the location of the corner as restored or reestablished and the location of that corner as previously restored or reestablished by distance and direction. Show the discrepancy on the plan view drawing under (d), above. Show the distances between the corner as previously restored or reestablished and (1) the corner as restored or reestablished, and (2) to at least 2 of the witness monuments shown on the drawing in (d), above.

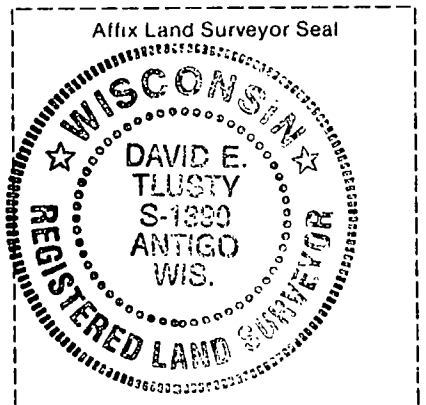
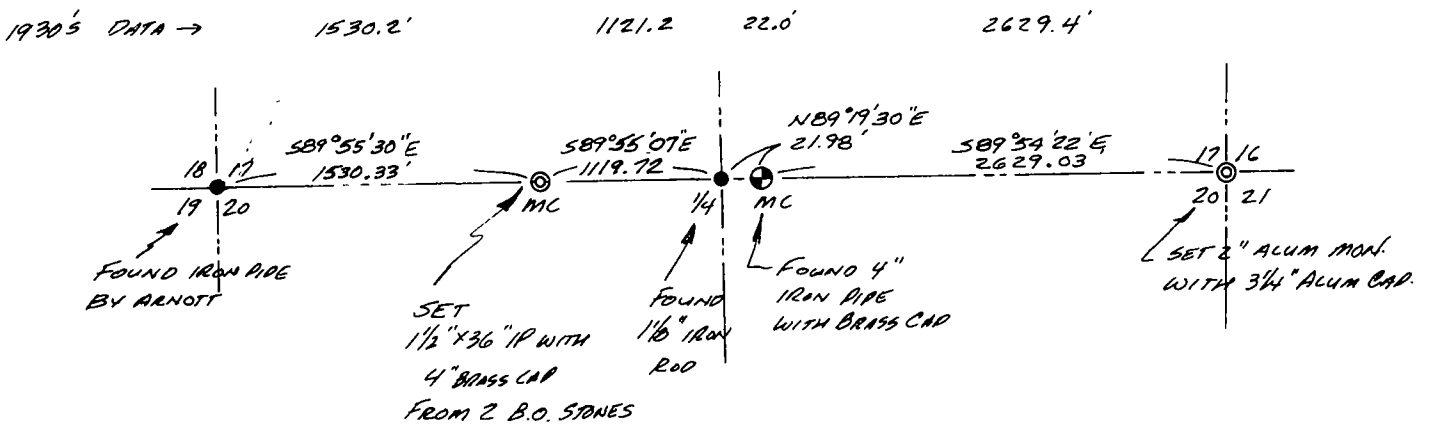
No discrepancy.

- (f) Was the corner restored through acceptance of (1) an obliterated evidence location, or, (2) a found perpetuated location?  
 A found perpetuated location.

- (g & h) Was the corner reestablished through lost corner proportionate methods? If so, show the method, including the directions and distances to other public land survey corners used as evidence or used for proportioning in determining the corner location.

No.

Sketch of South line Section 17 shown for reference only.



(i) I, David E. Tlusty, Langlade County Surveyor,  
 (type or print name)

certify that the corner location shown on this record was determined by me or under my direction and control and that this U.S. Public Land Survey Monument Record is correct and complete to the best of my knowledge and belief.

David E. Tlusty 9/9/96  
 Signature Date