

U.S. PUBLIC LAND SURVEY MONUMENT RECORD

(Prepared and as required by S. A-E 7.08 WI Administrative Code)

The NORTH 1/4 corner of Section 21, T. 33 N., R. 11 E., Langlade County, WI

Corner was: (check all that apply)

- Restored through acceptance of an obliterated evidence location.
- Restored through acceptance of a found perpetuated location.
- Determined to be lost and re-established through proportionate methods.
(Show bearings and distances to PLSS corners used for proportioning.)
- Restored/recovered/reestablished in a location that differs from a previously established position. (Show difference in plan view below.)

Check here if additional information is shown on the reverse side of this form.

Describe record evidence, recovered physical evidence, occupational evidence, testimonial evidence and all other evidence considered in the recovery/restoration of the corner.

The original corner was established in 1860 by Hiram C. Fellows. Original bearing trees: hemlock, 13", N43°E, 38 lks., and a sugar, 14", S50°E, 14 lks. Dorr used this corner in 1883 for subdivision survey work in Sections 16 & 21, but didn't describe it. The 1936 re-survey of this township set an iron rod for the corner at the center of hiway E-W at a fence line to the south. Set a brass capped witness corner 50 links (33 feet) due south of corner. In 1977, Ray Hallisy found the witness monument and marked 3 bearing trees to the witness monument. He didn't say anything about the actual corner monument. 07/23/96 Dave Tlusty found witness monument very solid in ground but leaning to the North. I re-established the corner proportionately E-W as shown below, and 32.65' north of 1936 witness monument. Used 32.65' because the witness monument leans to the North and I don't believe it was set that way. (see Note on reverse side of this form)

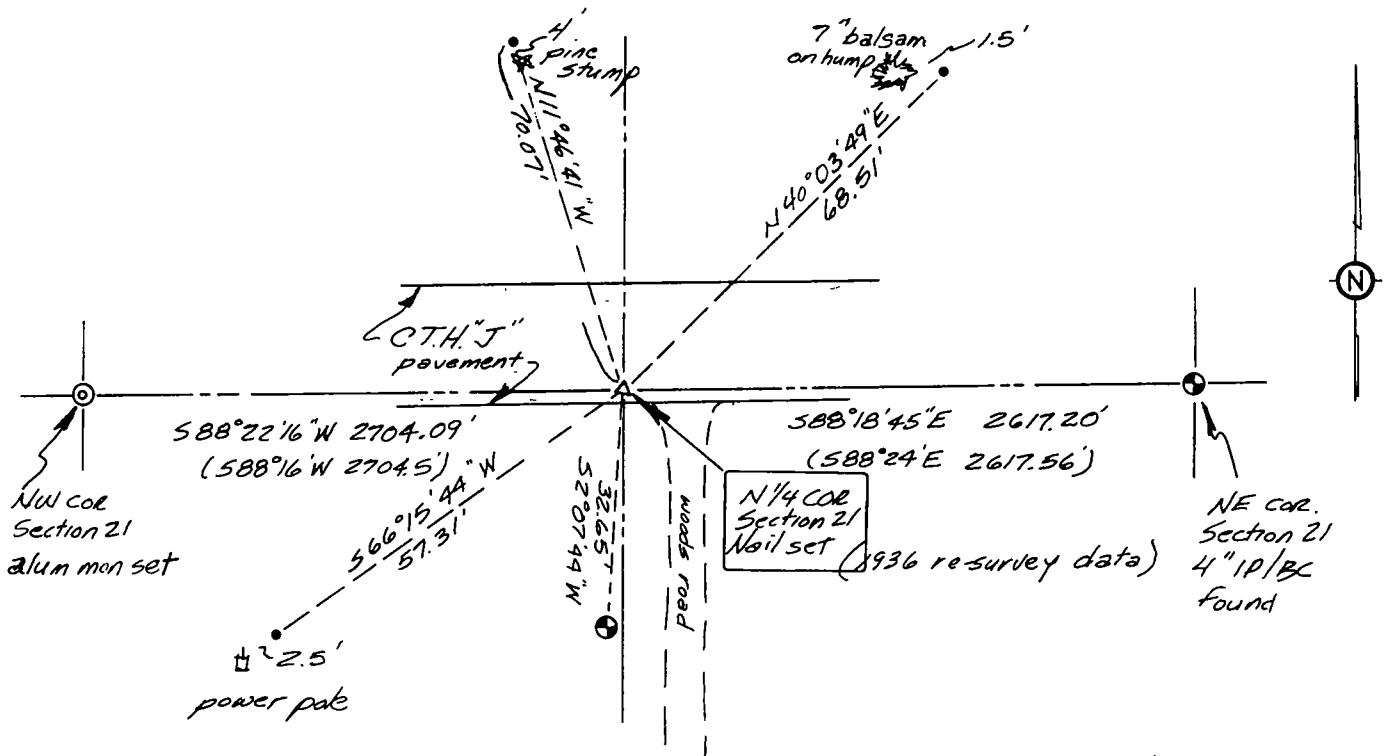
Physical description of the monument set:

Set a Berntsen SN-1 nail with 1" head in CTH "J", 2'± from South edge of pavement.

Describe the accessories used to perpetuate the location of the corner. Include a plan view drawing and indicate accessories found/set. Describe measuring point on bearing trees. Show any topographic features that would aid in future recovery of the corner.

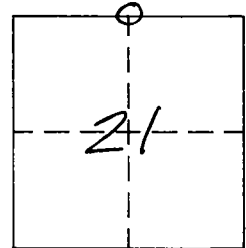
- = 3/4" x 30" rebar with red plastic cap set flush with ground.

Notes FB12-35



SURVEYORS SEAL

The N 1/4
corner of Section 21
T. 33 N., R. 11 E.
Langlade County, WI



○ = Location of corner

I, DAVID E. TLUSTY, certify that the corner location shown on this record was determined by me or under my direction and control and that this U.S. Public Land Survey Monument Record is correct and complete to the best of my knowledge and belief.

David E. Tlusty 4/1/97
Signature Date

INDEX NO. N 11

WISCONSIN ADMINISTRATIVE CODE

A-E 7.07 Monuments. The type and position of monuments to be set on any survey shall be determined by the nature of the survey, the permanency required, the nature of the terrain, the cadastral features involved, and the availability of material.

History: Cr. Register, February, 1987, No. 374, eff. 3-1-87.

A-E 7.08 U.S. public land survey monument record.

(1) **WHEN MONUMENT RECORD REQUIRED.** A U.S. public land survey monument shall be prepared and filed with the county surveyor's office as part of any land survey which includes or requires the perpetuation, restoration, reestablishment or use of a U.S. public land survey corner, and,

(a) There is no U.S. public land survey monument record for the corner on file in the office of the county surveyor or the register of deeds for the county in which the corner is located; or,

(b) The land surveyor who performs the survey accepts a location for the U.S. public land survey corner which differs from that shown on a U.S. public land survey monument record filed in the office of the county surveyor or register of deeds for the county in which the corner is located; or,

(c) The witness ties or U.S. public land survey monument referenced in an existing U.S. public land survey monument record have been destroyed or disturbed.

(2) **FORM REQUIRED.** A U.S. public land survey monument record shall be prepared on the board-approved form or on a form substantially the same as the board-approved form which includes all the elements required by this section. A form used for this purpose shall be entitled, "U.S. Public Land Survey Monument Record".

Note: A copy of the board-approved form is available from the Department of Regulation and Licensing, Bureau of Business and Design Professions, 1400 East Washington Avenue, P.O. Box 8935, Madison, Wisconsin 53708.

(3) **MONUMENT RECORD REQUIREMENTS.** A U.S. public land survey monument record shall show the location of the corner and shall include all of the following elements:

(a) The identity of the corner, as referenced to the U.S. public land survey system;

(b) A description of any record evidence, monument evidence, occupational evidence, testimonial evidence or any other material evidence considered by the surveyor, and whether the monument was found or placed;

(c) Reference ties to at least 4 witness monuments. Witness monuments shall be concrete, natural stone, iron, bearing trees or other equally durable material, except wood other than bearing trees;

(d) A plan view drawing depicting the relevant monuments and reference ties which is sufficient in detail to enable accurate relocation of the corner monument if the corner monument is disturbed;

(e) A description of any material discrepancy between the location of the corner as restored or reestablished and the location of that corner as previously restored or reestablished;

(f) Whether the corner was restored through acceptance of an obliterated evidence location or a found perpetuated location;

(g) Whether the corner was reestablished through lost-corner-proportionate methods;

(h) The directions and distances to other public land survey corners which were used as evidence or used for proportioning in determining the corner location; and,

(i) The stamp and signature or seal and signature of the land surveyor under whose direction and control the corner location was determined and a statement certifying that the U.S. public land survey monument record is correct and complete to the best of his or her knowledge and belief.

History: Cr. Register, February, 1987, No. 374, eff. 3-1-87; am. (1) and (3) (c), Register, May, 1989, No. 401, eff. 6-1-89.

Note: Upon observation of the distances along the North line of Section 21, it initially appears that this corner could be out of place in its E-W location. The current total distance (approx 5321') on the North line is very close to the original government distance (5323.56'), but this corner is about 45' from mid-point E-W. To confirm this location, I computed a rough subdivision of section 21 based on the 1936 re-survey data, from which I compute a distance between the CN 1/16 corner and the N 1/16 corner on the East line, of 2682'. This is agreeable with Dorrs distance on the same line of 2688'. I therefore consider the 1936 position and my re-established corner position as the best evidence of the location used by Dorr in 1888. Note also that Dorr found and measured to both original BT's. Dorrs notes are in FB149-41.

CERTIFIED LAND CORNER RESTORATION

Index No. N-11
33-11

State of Wisconsin }
County of Langlade } ss.

I Raymond J. Hallisy, do hereby certify that on the 27th day of November, 1977, I found evidence of the 1/4 corner of 16 & 21 Township 33 11E, North, Range 11E, Fourth Principal Meridian, as described hereon; and that from this evidence I established a new monument and accessories as described hereon to perpetuate the original location of this corner.

Resident witnesses:

.....
.....
.....

History of original corner establishment:

Corner set in the 1930 resurvey.

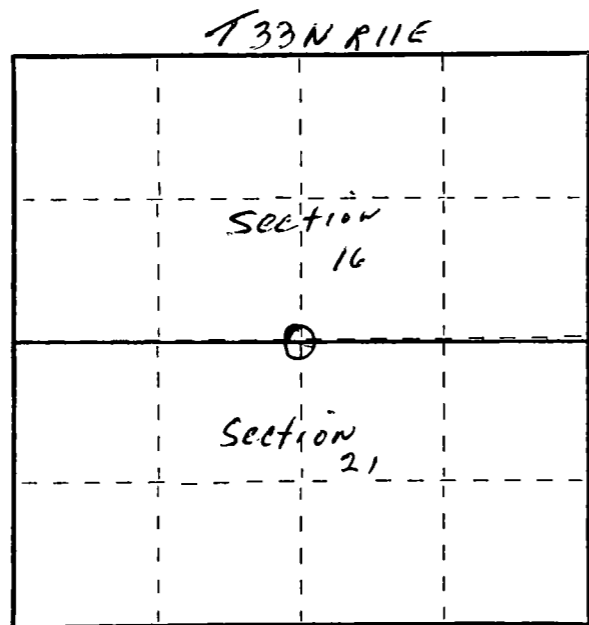
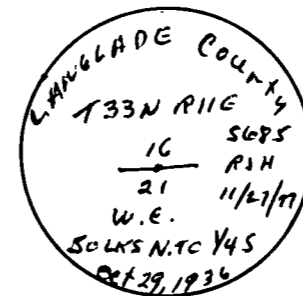
Description of corner evidence found:

4" iron pipe with brass cap south of Highway "J"

Description of monument and accessories I established to perpetuate the original location of this corner.

New BT's to witness corner

8" Ped Maple S68W 17' 1"
8" Hard Maple S45W 18' 6"
5" Hard Maple S12W 11' 7"



○ = Corner monument restored.

Dated at Antigo, Wis., this 27th day of November, 1977...

Signature Raymond J. Hallisy Title Land Surveyor Registration No. S685
(County Surveyor, Registered Land Surveyor, or other duly authorized official)

Office of Register of Deeds, County of Langlade, I hereby certify that the within instrument was filed in this office for record on the 27th day of November, 1977 at 11 o'clock AM.

(Register of Deeds)

By..... Deputy