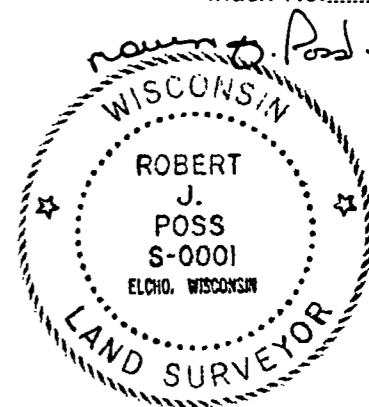


CERTIFIED LAND CORNER RESTORATION

33-11  
Index No. N-12

State of Wisconsin }  
County of Lanola } ss.

History of original corner establishment:



I, Robert J. Poss, do hereby certify that on the 8<sup>th</sup> day of May, 1968, I found evidence of the East 1/4 corner of between Sections 16 & 21 Township 33, North, Range 11 East, Fourth, Principal Meridian, as described hereon; and that from this evidence I established a new monument and accessories as described hereon to perpetuate the original location of this corner.

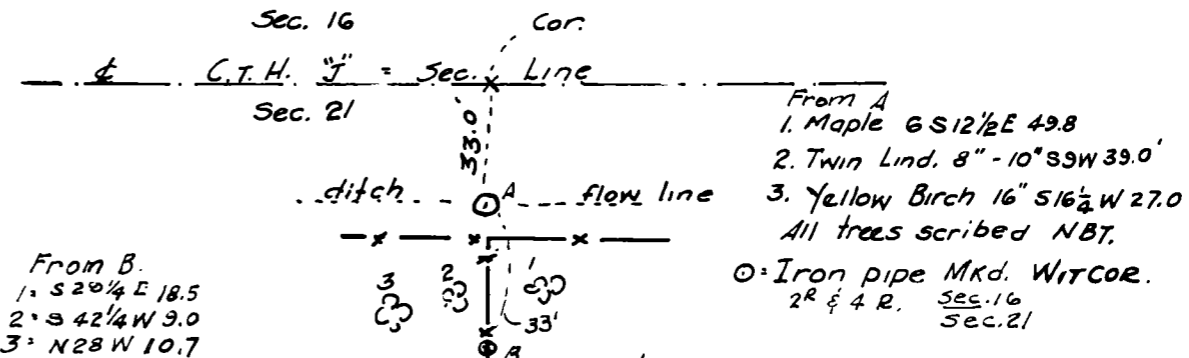
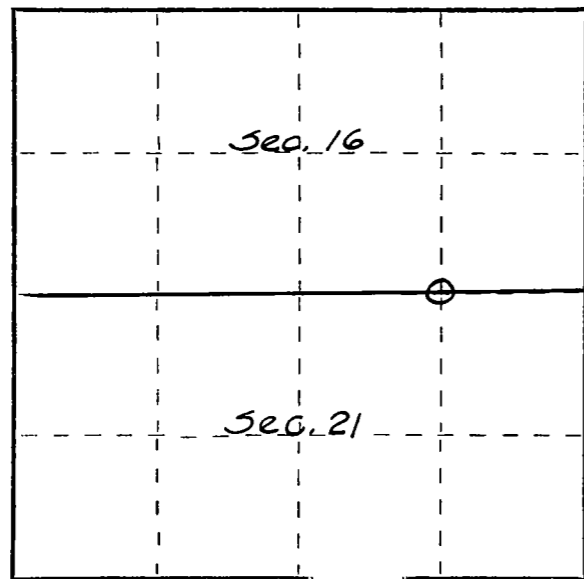
Description of corner evidence found:

*Original cor. stake removed and thrown along side of fence. Found reference marks set by County forestry crew.*

Resident witnesses:

Description of monument and accessories I established to perpetuate the original location of this corner.

FORM 985 M. C. MILLER CO., MILWAUKEE



Dated at ELCHO, Wis., this 20<sup>th</sup> day of May, 1968.

Signature Robert J. Poss Title Reg. Land Surveyor Registration No. S-1  
(County Surveyor, Registered Land Surveyor, or other duly authorized official)

Office of Register of Deeds, County of \_\_\_\_\_, I hereby certify that the within instrument was filed in this office for record on the \_\_\_\_\_ day of \_\_\_\_\_, 19\_\_\_\_ at \_\_\_\_\_ o'clock \_\_\_\_\_ M.

(Register of Deeds)

By \_\_\_\_\_ Deputy

○ = Corner monument as shown.