

CERTIFIED LAND CORNER RESTORATION

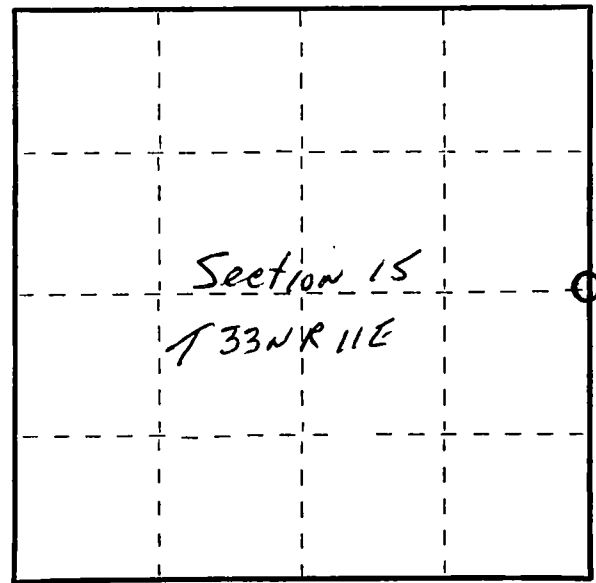
Index No. L-17

State of Wisconsin }  
County of Lan glade } ss.

I Raymond J. Hallisy, do hereby certify that on the 12th day of April, 1980, I found evidence of the 1/4 corner of Section 15 Township 33, North, Range 11E, Fourth Principal Meridian, as described hereon; and that from this evidence I established a new monument and accessories as described hereon to perpetuate the original location of this corner.

Resident witnesses:

.....  
.....  
.....



○ = Corner monument restored.

History of original corner establishment:  
Corner set in the 1930 resurvey.

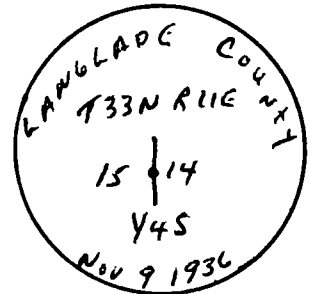
Description of corner evidence found:

- 4" iron pipe with brass cap
- 2 1/2" Stone with X      N70W      10'10"
- 18" Stone with X      N69P      10'

Description of monument and accessories I established to perpetuate the original location of this corner.

New BT's

- 8" White Birch      N83P      15'1"
- 6" Red Maple      S34E      17'
- 8" Red Maple      S16W      27'1"



Dated at Antigo, Wis., this 12th day of April, 1980.

Signature Raymond J. Hallisy Title Land Surveyor Registration No. S-685  
(County Surveyor, Registered Land Surveyor, or other duly authorized official)

Office of Register of Deeds, County of         , I hereby certify that the within instrument was filed in this office for record on the          day of         , 19         at          o'clock          M.

.....  
(Register of Deeds)  
By.....Deputy

FORM 985 H. C. MILLER CO., MILWAUKEE