

CERTIFIED LAND CORNER RESTORATION

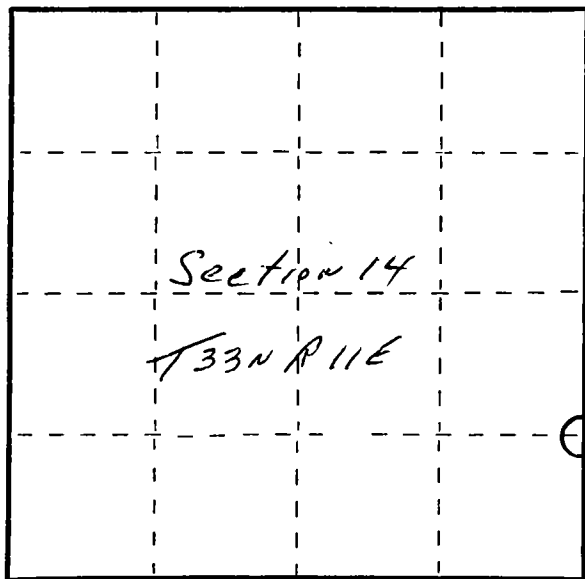
Index No. M-21

State of Wisconsin }  
County of Lanesh } ss.

I, Raymond J. Hollisy, do hereby certify that on the 11th day of December, 1982, I found evidence of the S1/16 corner of Section 13 & 14 Township 33, North, Range 11E, Fourth Principal Meridian, as described hereon; and that from this evidence I established a new monument and accessories as described hereon to perpetuate the original location of this corner.

Resident witnesses:

.....  
.....  
.....



○ = Corner monument restored.

History of original corner establishment:

Corner set in the 1930 resurvey.

Description of corner evidence found:

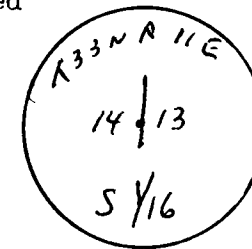
Squared cedar post down, point intact, Rock mound.

Description of monument and accessories I established to perpetuate the original location of this corner.

Set  $1\frac{1}{2}$ " iron pipe with aluminum cap, marked

New BT's

5" Red Maple S42E 20.1 lks  
7" Red Maple N67E 23 lks  
4" Balsam S32W 11.7 lks



Dated at Antigo, Wis., this 11th day of December, 1982.

Signature Raymond J. Hollisy Title Land Surveyor Registration No. S-685  
(County Surveyor, Registered Land Surveyor, or other duly authorized official)

Office of Register of Deeds, County of....., I hereby certify that the within instrument was filed in this office for record on the..... day of....., 19..... at..... o'clock..... M.

.....  
(Register of Deeds)

By..... Deputy