

CERTIFIED LAND CORNER RESTORATION

Index No. **J-7**

33-11

State of Wisconsin }
County of Langlade } ss.

I Raymond J. Hallisy, do hereby certify that on the 27th day of November, 1977, I found evidence of the 1/4 corner of 8 & 17 Township 33, North, Range 11E, Fourth Principal Meridian, as described hereon; and that from this evidence I established a new monument and accessories as described hereon to perpetuate the original location of this corner.

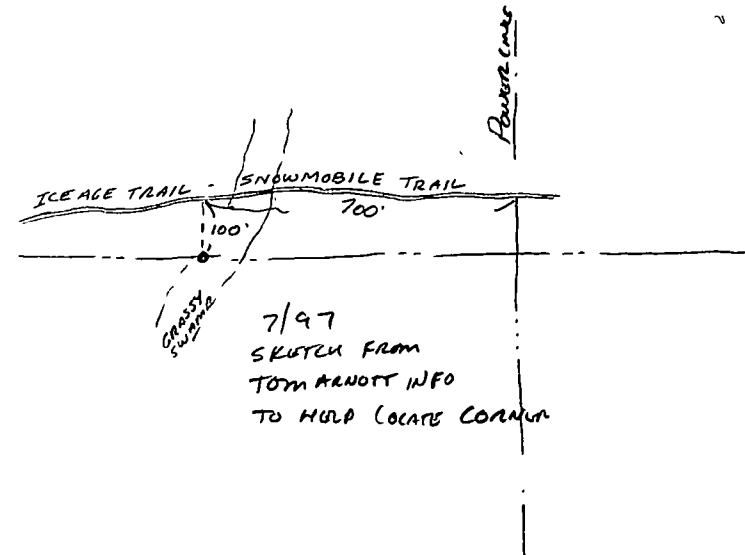
Resident witnesses:
.....
.....
.....

History of original corner establishment:

Corner set in the 1930 resurvey.

Description of corner evidence found:

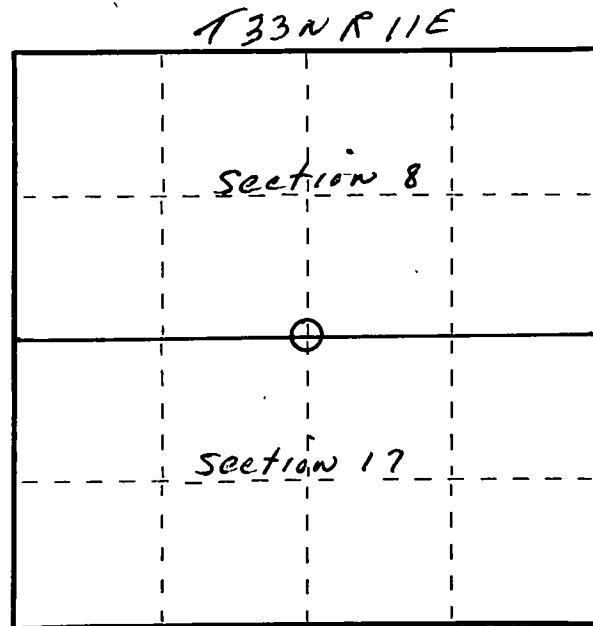
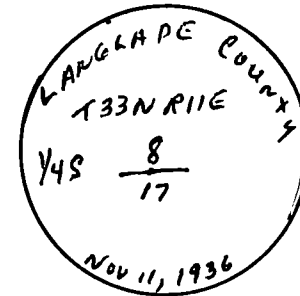
4" iron ~~PIPE~~ pipe with brass cap
Old BT 2 1/4" pine stump S16E 32' 2"



Description of monument and accessories I established to perpetuate the original location of this corner.

New BT's

5" Balsam N12E 23' 9"
6" Aspen, S12W 1'



○ = Corner monument restored.

Dated at Antigo, Wis., this 27th day of November, 1977

Signature Raymond J. Hallisy Title Land Surveyor Registration No. S685
(County Surveyor, Registered Land Surveyor, or other duly authorized official)

Office of Register of Deeds, County of....., I hereby certify that the within instrument was filed in this office for record on the..... day of....., 19..... at..... o'clock..... M.

(Register of Deeds)

By..... Deputy