

# U.S. PUBLIC LAND SURVEY MONUMENT RECORD

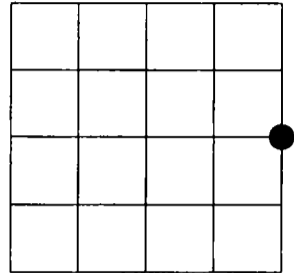
NOTE: This form is intended and designed to fulfill all requirements of Wisconsin Administrative Code, Chapter A-E 7.08 U.S. Public Land Survey Monument Record (3)(a)(b)(c)(d)(e)(f)(g)(h)(i). An additional sheet may be added if necessary to conform with said requirements.

(a) Corner location: Township 33 North

Range 11 East

Town of UPHAM

LANGLADE County, Wisconsin

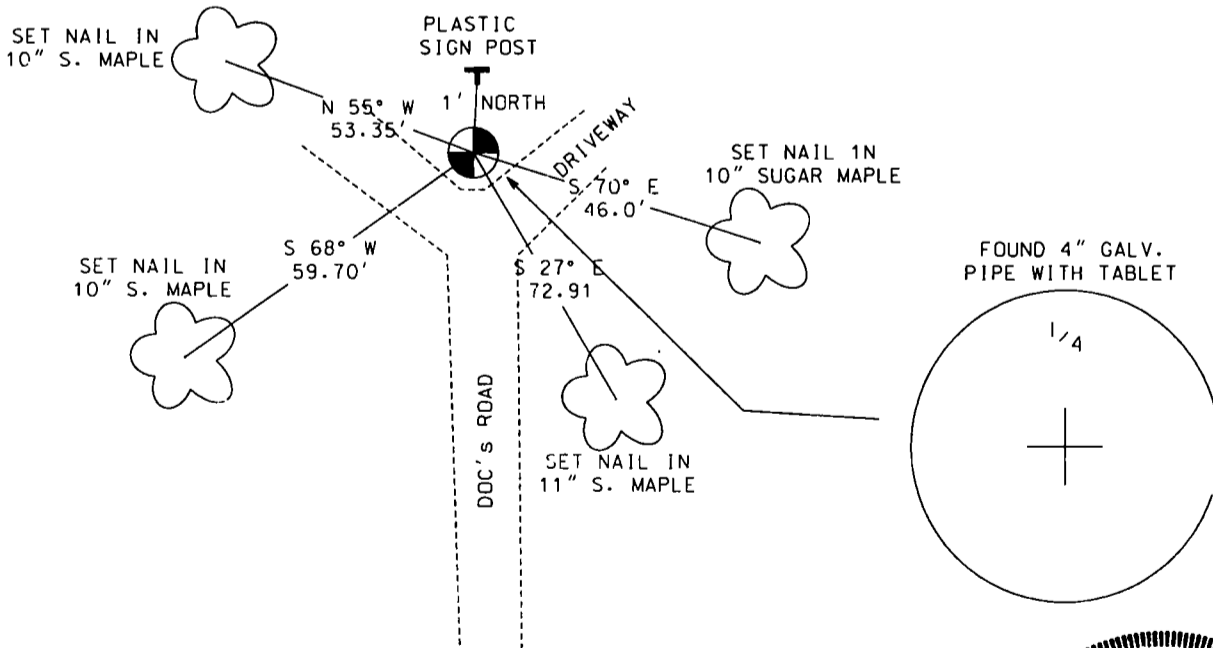


Section 6

(b)(f)(g)(h) Description of monument found at this corner and if it was accepted, state all evidence (material, testimonial, occupational, plats, records, other monuments) used as a basis for accepting. If not accepted or if nothing was found, state evidence used as basis for establishing location. If reestablished through lost corner proportionate methods, indicate all monuments, distances and directions used to establish. Indicate type of monument found or set and sign post.

- 1860 - HHERMAN C. FELLOWS. SET WOOD POST  
B.T.'s  
LIND 10 N 40 W 40 LKS.  
SUGAR 13 S 40 E 20 LKS.
- 1936 - E.F. KOWALKE AND C.W. BORTH FOUND 3"  
GALV. PIPE WITH STAMPED CAP  
B.T.  
HEMLOCK STUMP 18" N 70° W 44.9'
- 1971 - RAYMOND J. HALLISY FOUND 4" GALV. PIPE  
WITH X ON TABLET STAMPED 1/4

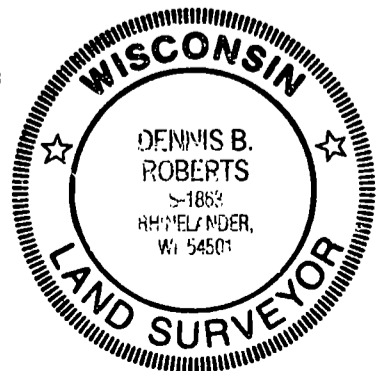
(c)(d)(e) Plan view of corner with ties to at least 4 witness monuments. If in disagreement with previously established corner, show the distances between the two corners and also indicate the ties to the



(i) I, Dennis Roberts, Registered Land Surveyor \*S-1863, hereby certify that the corner location on this record was determined by me or under my direction and control and that this U.S. Public Land Survey Monument Record is correct and complete to the best of my knowledge and belief.

*Dennis B. Roberts*  
Signature

11-03-99  
Date



Index No. CS

CERTIFIED LAND CORNER RESTORATION

33-11 Index No. C-5

State of Wisconsin }  
County of LANGLADE } ss.

History of original corner establishment:

I Raymond J. Hallisy do hereby certify that on the 31 day of JULY, 19 71, I found evidence of the WEST 1/4 corner of SECTION 5 Township 33N, North, Range 11E, Fourth, Principal Meridian, as described hereon; and that from this evidence I established a new monument and accessories as described hereon to perpetuate the original location of this corner.

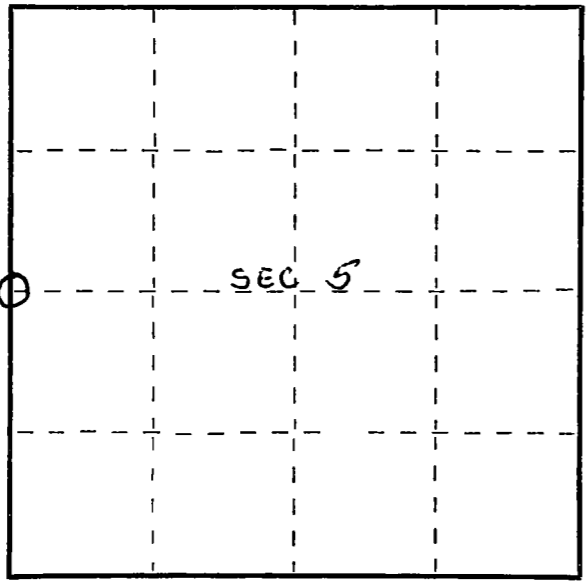
Description of corner evidence found:  
FOUND 4" GALVINIZED PIPE WITH X ON CAP - IN ROAD BED STAMPED 1/4

Resident witnesses:  
\_\_\_\_\_  
\_\_\_\_\_  
\_\_\_\_\_

Description of monument and accessories I established to perpetuate the original location of this corner.

RE SET SAME FLUSH WITH ROAD BED

FORM 985 H. C. MILLER CO., MILWAUKEE



NEW BTS  
HARD MAPLE 10" S73W 8'5"  
BASS WOOD 12" N27W 11'11"  
HARD MAPLE 8" N86E 26'9"

Dated at Antigo, Wis., this 31 day of July, 19 71.

Signature Raymond J. Hallisy Title Reg LAND SURVEYOR Registration No. 1-685  
(County Surveyor, Registered Land Surveyor, or other duly authorized official)

Office of Register of Deeds, County of \_\_\_\_\_, I hereby certify that the within instrument was filed in this office for record on the \_\_\_\_\_ day of \_\_\_\_\_, 19 \_\_\_\_\_ at \_\_\_\_\_ o'clock \_\_\_\_\_ M.

(Register of Deeds)

By \_\_\_\_\_ Deputy

○ = Corner monument restored.