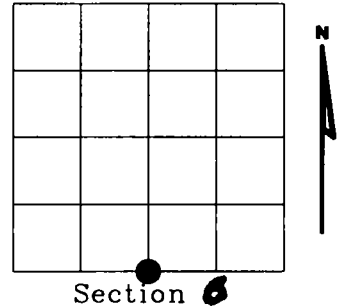


# U.S. PUBLIC LAND SURVEY MONUMENT RECORD

NOTE: This form is intended and designed to fulfill all requirements of Wisconsin Administrative Code, Chapter A-E 7.08 U.S. Public Land Survey Monument Record (3)(a)(b)(c)(d)(e)(f)(g)(h)(i) An additional sheet may be added if necessary to conform with said requirements.

(a) Corner location: Township 33 North  
 Range 11 East  
 Town of UPHAM  
 LANGLADE County, Wisconsin



(b)(f)(g)(h) Description of monument found at this corner and if it was accepted, state all evidence (material, testimonial, occupational, plats, records, other monuments) used as a basis for accepting. If not accepted or if nothing was found, state evidence used as basis for establishing location. If reestablished through lost corner proportionate methods, indicate all monuments, distances and directions used to establish. Indicate type of monument found or set and sign post.

1860 - CORNER SET BY HERMAN C. FELLOWS, SET WOOD POST  
 B.T.'s

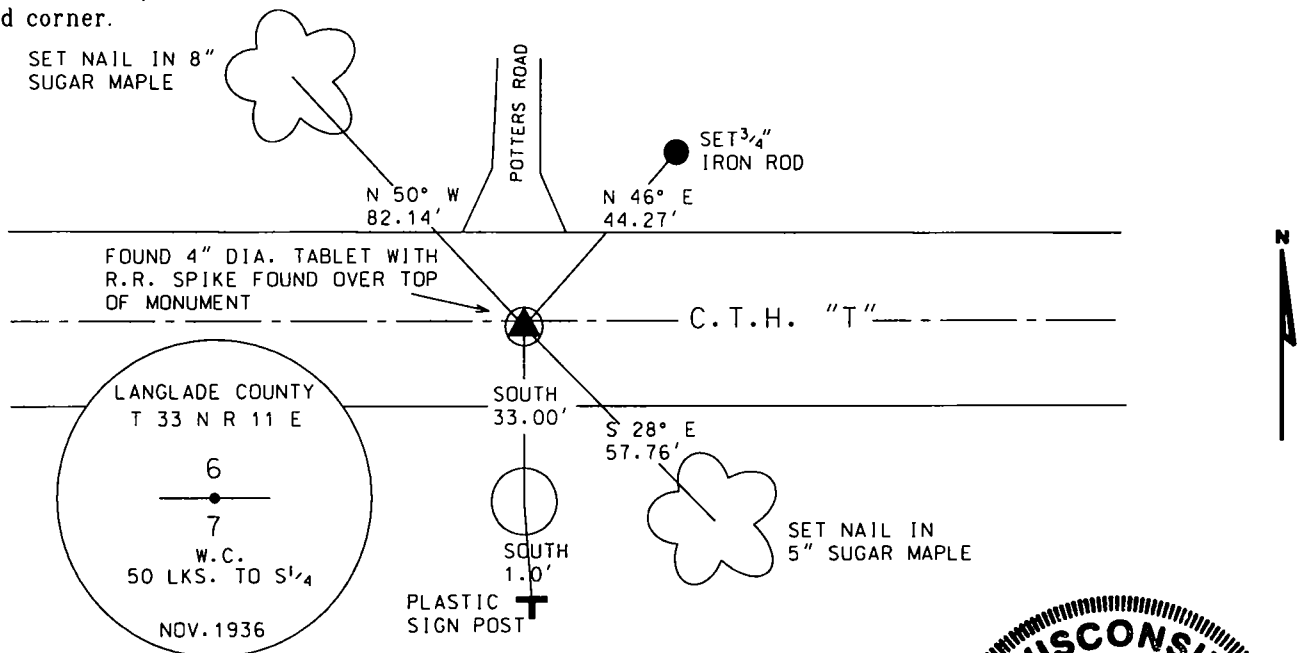
SUGAR 12 N 43 E 10 LKS.  
 HEMLOCK 8 S 70 W 25 LKS.

1936 - E.F. KOWALKE AND C.W. BORTH, FOUND  
 STONE IN ROADWAY  
 B.T.'s

CHERRY 6" N 53 E 47'  
 HEMLOCK 16" S 52°30' E 71.6'  
 SET BRASS CAP W.C. 50 LKS. DUE SOUTH

1977 - RAYMOND J. HALLISY FOUND 4" BRASSCAP W.C. AND  
 SET B.T.'s TO WITNESS CORNER

(c)(d)(e) Plan view of corner with ties to at least 4 witness monuments. If in disagreement with previously established corner, show the distances between the two corners and also indicate the ties to the disputed corner.



(i) I, Dennis Roberts, Registered Land Surveyor \*S-1863, hereby certify that the corner location on this record was determined by me or under my direction and control and that this U.S. Public Land Survey Monument Record is correct and complete to the best of my knowledge and belief.



Index No. E3

*Dennis B. Roberts* 11-03-99  
 Signature Date

CERTIFIED LAND CORNER RESTORATION

Index No. E-3

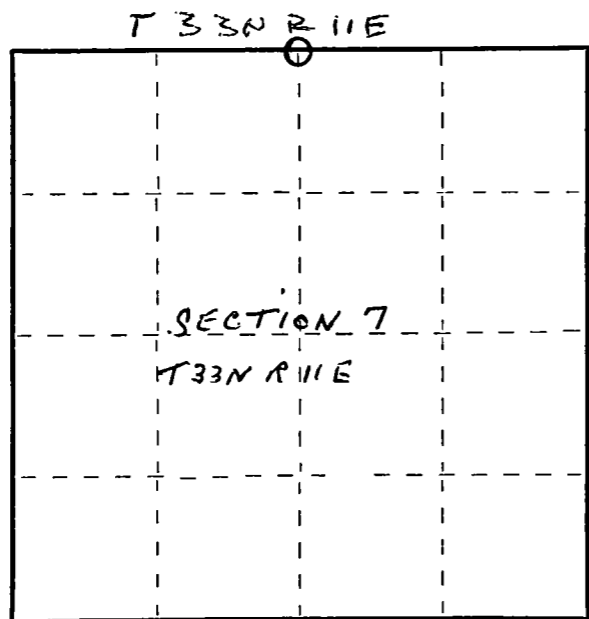
State of Wisconsin }  
County of Langlade } ss.

I Raymond J. Hallisy, do hereby certify that on the.....day of....., 19....., I found evidence of the.....corner of.....Township....., North, Range....., Fourth Principal Meridian, as described hereon; and that from this evidence I established a new monument and accessories as described hereon to perpetuate the original location of this corner.

Resident witnesses:

.....  
.....  
.....

FORM 985 H. C. MILLER CO. MILWAUKEE



○ = Corner monument restored.

History of original corner establishment:

Corner set in the 1930 resurvey.

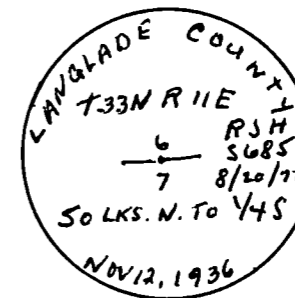
Description of corner evidence found:

4" iron pipe with brass cap set as witness corner 50 Links South of corner. Corner sets in Hiway "T".

Description of monument and accessories I established to perpetuate the original location of this corner.

BT's to witness corner.

- 12" Red Oak S50E 27 Feet
- 4" Hard Maple S13E 18.4 Feet
- 6" Hard Maple S58W 20.5 Feet



Dated at Antigo, Wis., this 20th day of August, 1977.

Signature Raymond J. Hallisy Title Land Surveyor Registration No. S685  
(County Surveyor, Registered Land Surveyor, or other duly authorized official)

Office of Register of Deeds, County of....., I hereby certify that the within instrument was filed in this office for record on the.....day of....., 19..... at.....o'clock..... M.

.....  
(Register of Deeds)

By.....Deputy