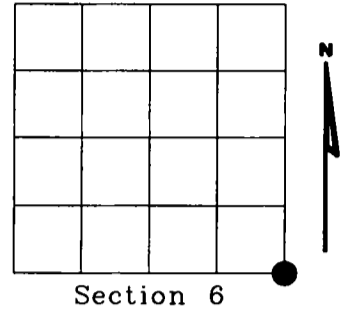


U.S. PUBLIC LAND SURVEY MONUMENT RECORD

NOTE: This form is intended and designed to fulfill all requirements of Wisconsin Administrative Code, Chapter A-E 7.08 U.S. Public Land Survey Monument Record (3)(a)(b)(c)(d)(e)(f)(g)(h)(i). An additional sheet may be added if necessary to conform with said requirements.

(a) Corner location: Township 33 North
 Range 11 East
 Town of UPHAM
 LANGLADE County, Wisconsin



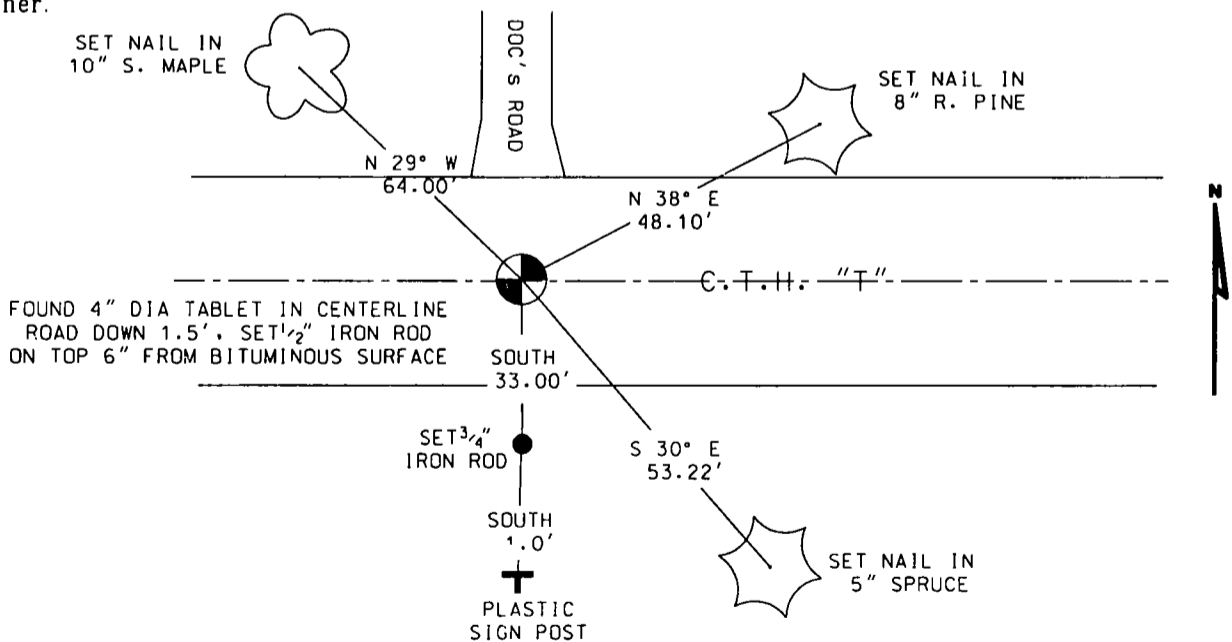
(b)(f)(g)(h) Description of monument found at this corner and if it was accepted, state all evidence (material, testimonial, occupational, plats, records, other monuments) used as a basis for accepting. If not accepted or if nothing was found, state evidence used as basis for establishing location. If reestablished through lost corner proportionate methods, indicate all monuments, distances and directions used to establish. Indicate type of monument found or set and sign post.

1860 - CORNER SET BY HERMAN C. FELLOWS. SET POST
 B.T.'s
 BIRCH 10 S 20 W 40 LKS.
 HEMLOCK 7 N 35 E 12 LKS.

1936 - E.F. KOWALKE AND C.W. BORTH FOUND
 IRON PIPE IN ROAD
 NEW B.T.'s
 HEMLOCK STUMP 12" S 3° E 35'
 BIRCH 14" S 24° E 48.1'
 FENCE POST N 37° 30' E 32.4'
 SET BRASS CAP AS W.C. 50 LKS. DUE SOUTH

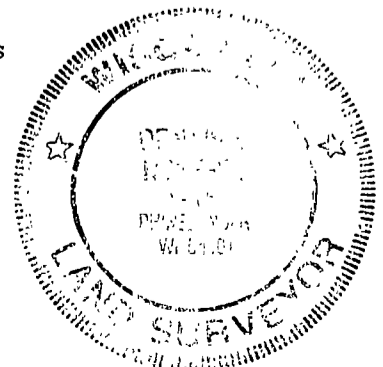
1977 - RAYMOND J. HALLISY. FOUND 4" IRON PIPE WITH BRASS CAP
 WITNESS CORNER 50 LKS. SOUTH OF CORNER.
 CORNER SETS IN HWY. "T"

(c)(d)(e) Plan view of corner with ties to at least 4 witness monuments. If in disagreement with previously established corner, show the distances between the two corners and also indicate the ties to the disputed corner.



(i) I, Dennis Roberts, Registered Land Surveyor *S-1863, hereby certify that the corner location on this record was determined by me or under my direction and control and that this U.S. Public Land Survey Monument Record is correct and complete to the best of my knowledge and belief.

Dennis B. Roberts 11-03-99
 Signature Date



Index No. E 5

CERTIFIED LAND CORNER RESTORATION

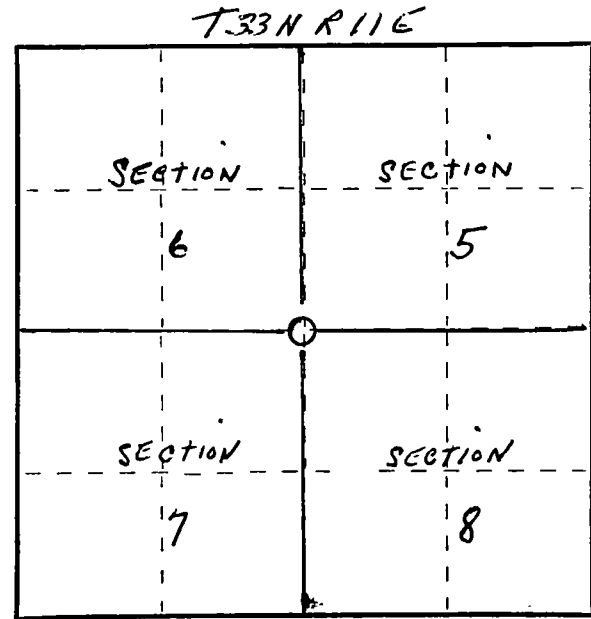
Index No. E-5

State of Wisconsin }
County of Lanlade } ss.

I Raymond J. Hallisy, do hereby certify that on the 20th day of August, 1977, I found evidence of the Section corner of 5, 6, 7, & 8 Township 33 11E, North, Range 11E, Fourth Principal Meridian, as described hereon; and that from this evidence I established a new monument and accessories as described hereon to perpetuate the original location of this corner.

Resident witnesses:

.....
.....
.....



○ = Corner monument restored.

History of original corner establishment:

Corner set in the 1930 resurvey.

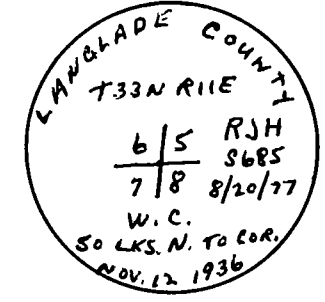
Description of corner evidence found:

4" iron pipe with brass cap set as witness corner 50 Links South of corner. Corner sets in Hiway "T".

Description of monument and accessories I established to perpetuate the original location of this corner.

BT's to witness corner

10" clump Hard Maple S44E 17 Feet
5" Twin Hard Maple S55W 36.8 Feet



Dated at Antigo, Wis., this 20th day of August, 1977

Signature Raymond J. Hallisy Title Land Surveyor Registration No. S685
(County Surveyor, Registered Land Surveyor, or other duly authorized official)

Office of Register of Deeds, County of _____, I hereby certify that the within instrument was filed in this office for record on the _____ day of _____, 19____ at _____ o'clock _____ M.

.....
(Register of Deeds)

By.....Deputy

FORM 985 H. C. MILLER CO. MILWAUKEE