

CERTIFIED LAND CORNER RESTORATION

Index No. V-W-21-22

33

State of Wisconsin }
County of Lan #lade } ss.

I, Raymond J. Hallisy, do hereby certify that on the 11th day of June, 1978, I found evidence of the A. P. #34 corner of Section 36 Township 33, North, Range 10E, Fourth Principal Meridian, as described hereon; and that from this evidence I established a new monument and accessories as described hereon to perpetuate the original location of this corner.

Resident witnesses:

.....
.....
.....

History of original corner establishment:

Established in the Dependent Resurvey and Extension Survey in 1931, of Sections 26, 35, & 36.

Description of corner evidence found:

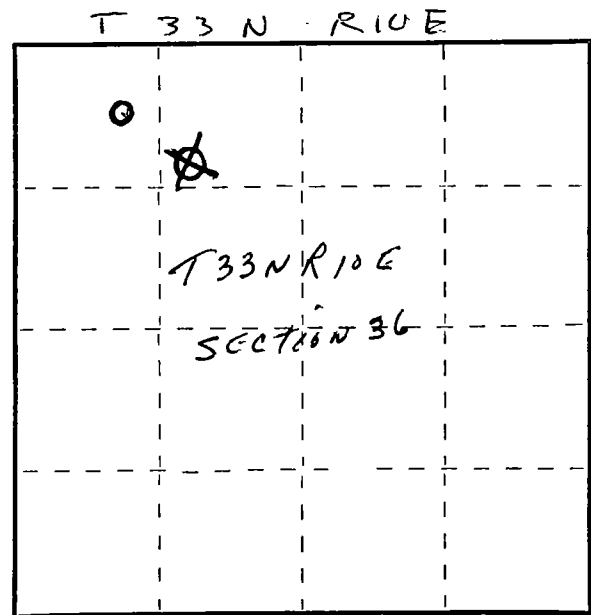
2" iron pipe with brass cap.

Description of monument and accessories I established to perpetuate the original location of this corner.

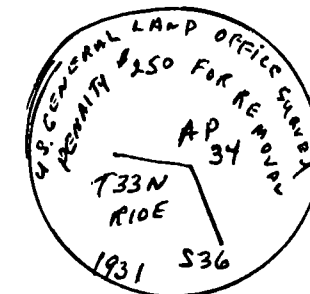
New BT's

Hard Maple 10" S76E 12' 3"
Hard Maple 7" S32E 17' 9"
Basswood 10" N34W 2' 5"

FORM 985 M. C. MILLER CO. MILWAUKEE



○ = Corner monument restored.



Dated at Antigo, Wis., this 11th day of June, 1978

Signature Raymond J. Hallisy Title Land Surveyor Registration No. S-685
(County Surveyor, Registered Land Surveyor, or other duly authorized official)

Office of Register of Deeds, County of Antigo, I hereby certify that the within instrument was filed in this office for record on the 11th day of June, 1978 at 1 o'clock P. M.

.....
(Register of Deeds)

By.....Deputy