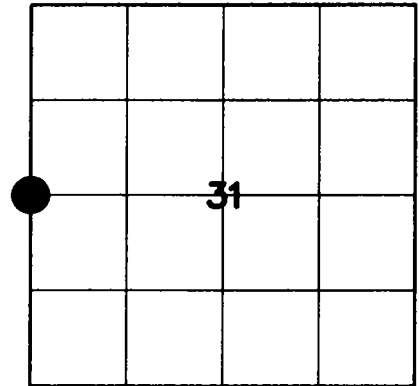


# U.S. PUBLIC LAND SURVEY MONUMENT RECORD

### HISTORY OF ORIGINAL CORNER ESTABLISHMENT AND SUBSEQUENT RESTORATION AND DESCRIPTION OF ANY RECORD, MONUMENT OCCUPATIONAL, TESTIMONIAL OR OTHER EVIDENCE CONSIDERED:

THE ORIGINAL CORNER WAS SET BY FELLOWS IN 1859. THE GLO DID A DEPENDENT RESURVEY IN 1931 WHERE THEY SET THE BRASS CAP MONUMENT. BILL KELLY RECORDED A MONUMENT RECORD IN 1980 WHICH SHOWED THE 4X4 WOOD POST NORTH OF THE BRASS CAP. WE DID FIND THE WOOD POST AND THE BRASS CAP BUT DID NOT FIND ANY OF THE BEARING TREES FROM THE 1931 SURVEY. WE LOCATED THE BRASS CAP MONUMENT ABOUT A FOOT UNDER THE SURFACE OF THE BOG.

● = LOCATION OF CORNER

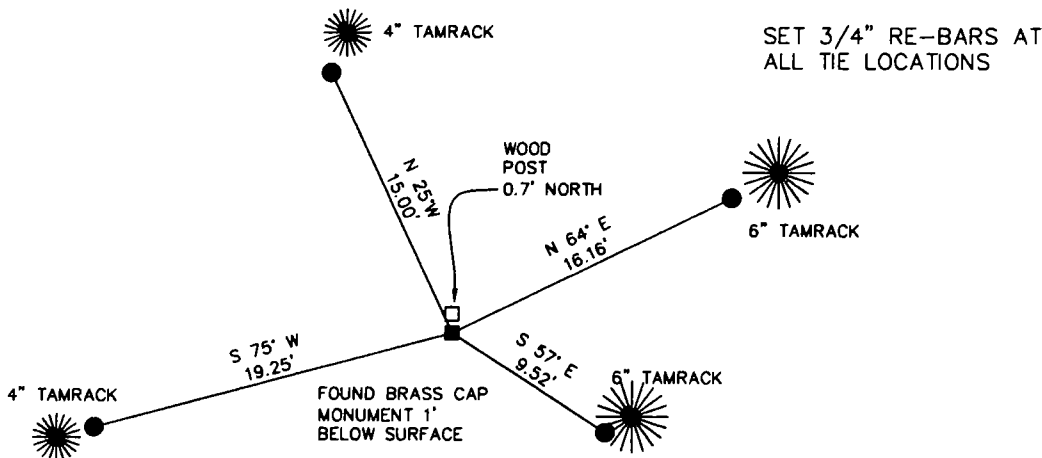


SECTION 31  
TOWNSHIP 33 NORTH, RANGE 11 EAST  
TOWN OF UPHAM  
LANGLADE COUNTY, WISCONSIN

### CORNER WAS: (CHECK ALL THAT APPLY)

- RESTORED THROUGH ACCEPTANCE OF AN OBLITERATED EVIDENCE LOCATION
- RESTORED THROUGH ACCEPTANCE OF A FOUND PERPETUATED LOCATION
- CONSIDERED A LOST CORNER AND REESTABLISHED THROUGH LOST CORNER PROPORTIONATE METHODS (INCLUDE A PLAN VIEW DRAWING SHOWING DISTANCES AND DIRECTIONS TO OTHER PUBLIC LAND SURVEY CORNERS USED FOR PROPORTIONING AND DETERMINING THE CORNER LOCATION)
- RESTORED OR REESTABLISHED IN A LOCATION THAT DIFFERS FROM A PREVIOUS RESTORATION OR REESTABLISHMENT (INCLUDE A PLAN VIEW DRAWING AND INDICATE WHAT WAS SET AND/OR FOUND)
- CHECK IF THERE IS ADDITIONAL INFORMATION ON BACK

DESCRIBE THE MONUMENT AND ACCESSORIES USED TO PERPETUATE THE LOCATION OF THE CORNER. (INCLUDE A PLAN VIEW DRAWING AND INDICATE WHAT WAS SET AND/OR FOUND) ALSO INCLUDE FOUR TIES TO THE SECTION CORNER AND DESCRIPTION OF THE TIES.

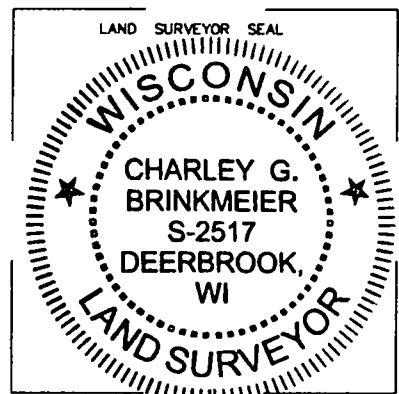


**CHARLEY G. BRINKMEIER**

(Type or print name) CERTIFY THAT THE CORNER LOCATION SHOWN ON THIS RECORD WAS DETERMINED BY ME OR UNDER MY DIRECTION AND CONTROL AND THAT THIS U.S. PUBLIC LAND SURVEY MONUMENT RECORD IS CORRECT AND COMPLETE TO THE BEST OF MY KNOWLEDGE AND BELIEF.

*Charley Brinkmeier*  
SIGNATURE

4-25-04  
DATE



X 25  
33-10  
INDEX NO.

CERTIFIED LAND CORNER RESTORATION

Index No. X-1  
X-25  
33-10

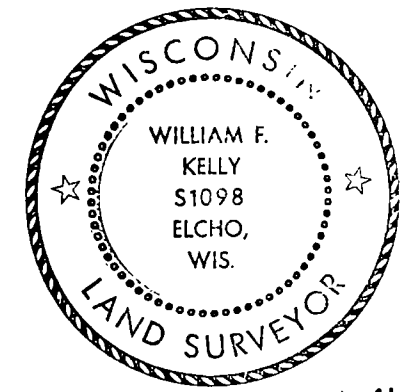
State of Wisconsin }  
 County of LANGLADE } ss.

I William F. Kelly, do hereby certify that on the 20<sup>th</sup> day of February, 1980, I found evidence of the West 1/4 corner of sect 31 Township 33, North, Range 11 EAST, Fourth Principal Meridian, as described hereon; and that from this evidence I established a new monument and accessories as described hereon to perpetuate the original location of this corner.

Resident witnesses:

J. Eckhardt

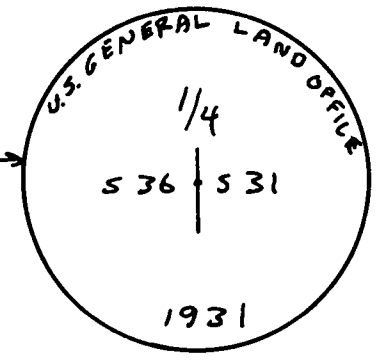
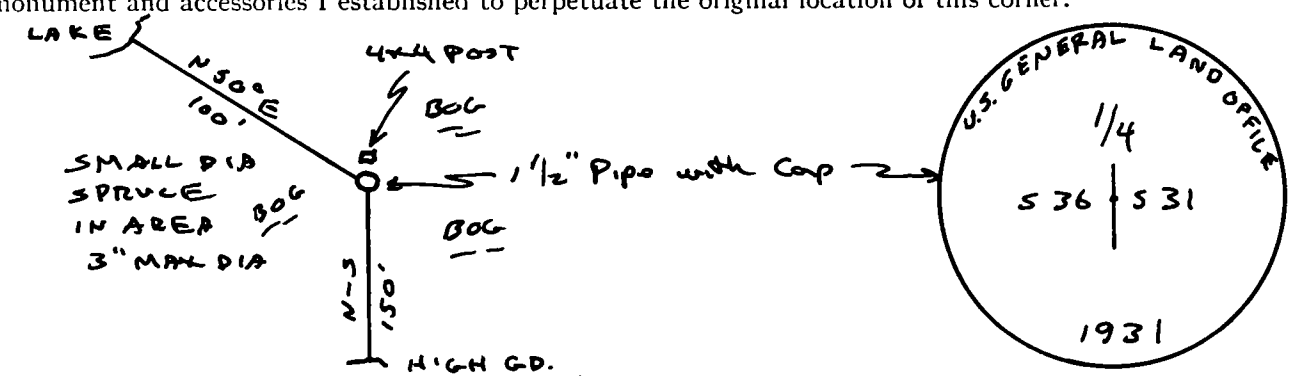
History of original corner establishment:  
Original corner set by Hiram Fellows in July 1859



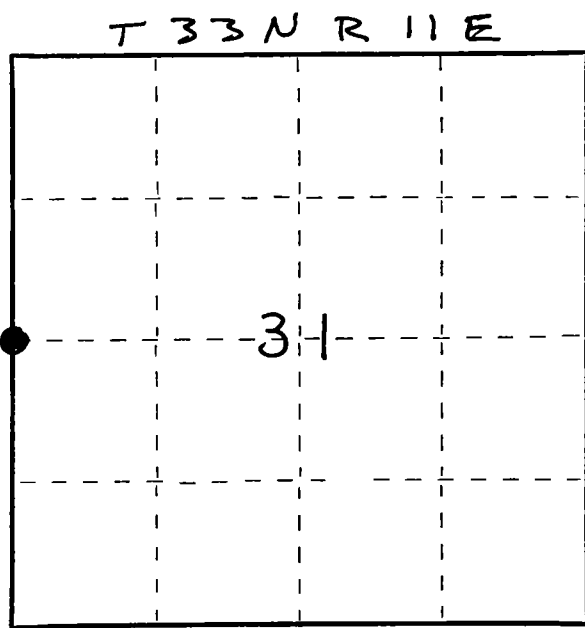
*William F. Kelly*

Description of corner evidence found:  
Corner recovered in 1931 General Land Office survey  
Located monument set in 1931  
corner is in swamp & Bog Area set 4x4 wood post North of monument as a guard.

Description of monument and accessories I established to perpetuate the original location of this corner.



FORM 985 H. C. MILLER CO. MILWAUKEE



○ = Corner monument restored.

Dated at ELCHO, Wis., this 19<sup>th</sup> day of MARCH, 1980.

Signature William F. Kelly Title County Surveyor Registration No. S1098  
 (County Surveyor, Registered Land Surveyor, or other duly authorized official)

Office of Register of Deeds, County of \_\_\_\_\_, I hereby certify that the within instrument was filed in this office for record on the \_\_\_\_\_ day of \_\_\_\_\_, 19\_\_\_\_ at \_\_\_\_\_ o'clock \_\_\_\_\_ M.

(Register of Deeds)

By \_\_\_\_\_ Deputy