

CERTIFIED LAND CORNER RESTORATION

Index No. X-1

State of Wisconsin }
County of LAYLADE } ss.

I WILLIAM F. KELLY do hereby certify that on the 20th day of FEBRUARY 1980, I found evidence of the WEST 1/4 corner of SECTION 31 Township 33 North, Range 11 EAST, Fourth Principal Meridian, as described hereon; and that from this evidence I established a new monument and accessories as described hereon to perpetuate the original location of this corner.

Resident witnesses:

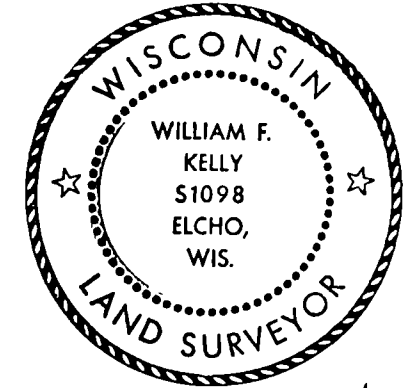
J. ECKHARDT

History of original corner establishment:

ORIGINAL CORNER SET BY HIRAM FELLOWS IN JULY 1859.

Description of corner evidence found:

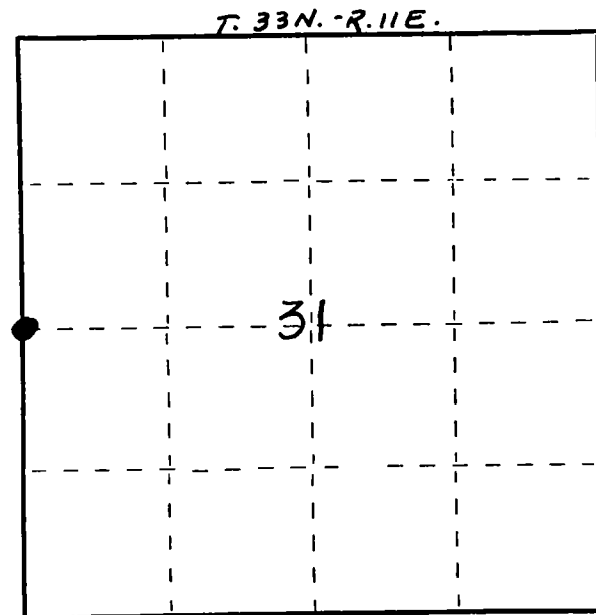
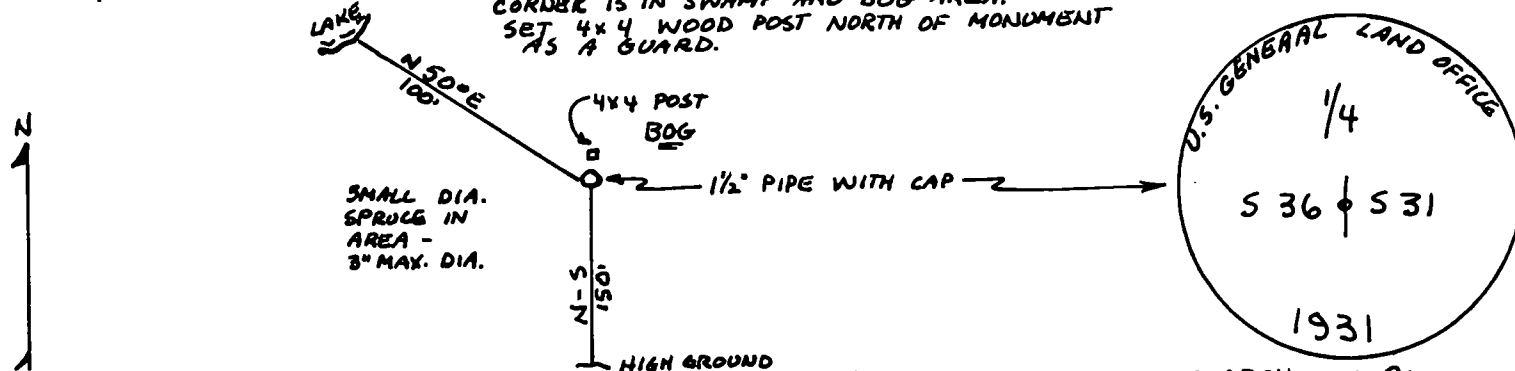
CORNER RECOVERED IN 1931 - GENERAL LAND OFFICE SURVEY.
LOCATED MONUMENT SET IN 1931.



William F. Kelly

Description of monument and accessories I established to perpetuate the original location of this corner.

CORNER IS IN SWAMP AND BOG AREA.
SET 4x4 WOOD POST NORTH OF MONUMENT AS A GUARD.



O = Corner monument restored.

Dated at ELCHO, Wis., this 19th day of MARCH, 1980

Signature William F. Kelly Title COUNTY SURVEYOR Registration No. S 1098
(County Surveyor, Registered Land Surveyor, or other duly authorized official)

Office of Register of Deeds, County of _____, I hereby certify that the within instrument was filed in this office for record on the _____ day of _____, 19____ at _____ o'clock _____ M.

(Register of Deeds)

By _____ Deputy

FORM 985 - 1-78 WISCONSIN DEPARTMENT OF NATURAL RESOURCES