

CERTIFIED LAND CORNER RESTORATION

Index No. A-23

State of Wisconsin }
County of Lafayette } ss.

History of original corner establishment:

I Raymond J. Hallisy, do hereby certify that on the 3rd day of June, 19 78, I found evidence of the Section 36 & 1 corner of 32 & 33 Township ~~XXX~~ 10E, North, Range _____, Fourth Principal Meridian, as described hereon; and that from this evidence I established a new monument and accessories as described hereon to perpetuate the original location of this corner.

Description of corner evidence found:

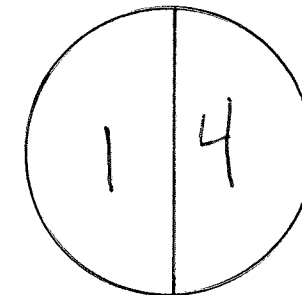
4" Galvanized pipe with cap, almost flush with the ground.

Resident witnesses:

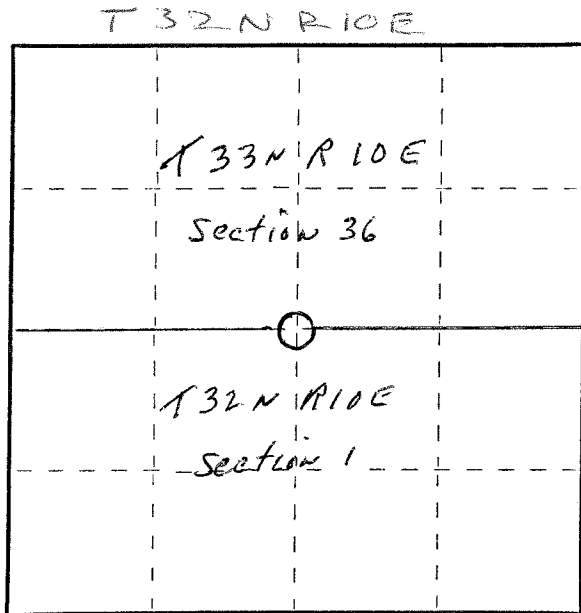
Description of monument and accessories I established to perpetuate the original location of this corner.

New ET's

7" Yellow Birch S82W 25' 8"
16" Red Maple S20W 26'
11" White Birch (double) S15E 23' 10"



FORM 985 H. C. MILLER CO., MILWAUKEE



○ = Corner monument restored.

Dated at Antigo, Wis., this 3rd day of June, 19 78.

Signature Raymond J. Hallisy Title Land Surveyor Registration No. S-685
(County Surveyor, Registered Land Surveyor, or other duly authorized official)

Office of Register of Deeds, County of _____, I hereby certify that the within instrument was filed in this office for record on the _____ day of _____, 19 _____ at _____ o'clock _____ M.

(Register of Deeds)

By _____ Deputy