

4331036 0000

U.S. PUBLIC LAND SURVEY MONUMENT RECORD

(Prepared and as required by S. A-E 7.08 WI Administrative Code)

The SOUTHEAST corner of Section 36, T. 33 N., R. 10 E., Langlade County, WI
Corner was (check all that apply)

- Restored through acceptance of an obliterated evidence location.
- Restored through acceptance of a found perpetuated location.
- Determined to be lost and re-established through proportionate methods. (show bearings and distances to PLSS corners used for proportioning.)
- Restored/recovered/re-established in a location that differs from a previously established position. (Show difference in plan view below.)
- Check here if additional information is shown on the reverse side of this form.

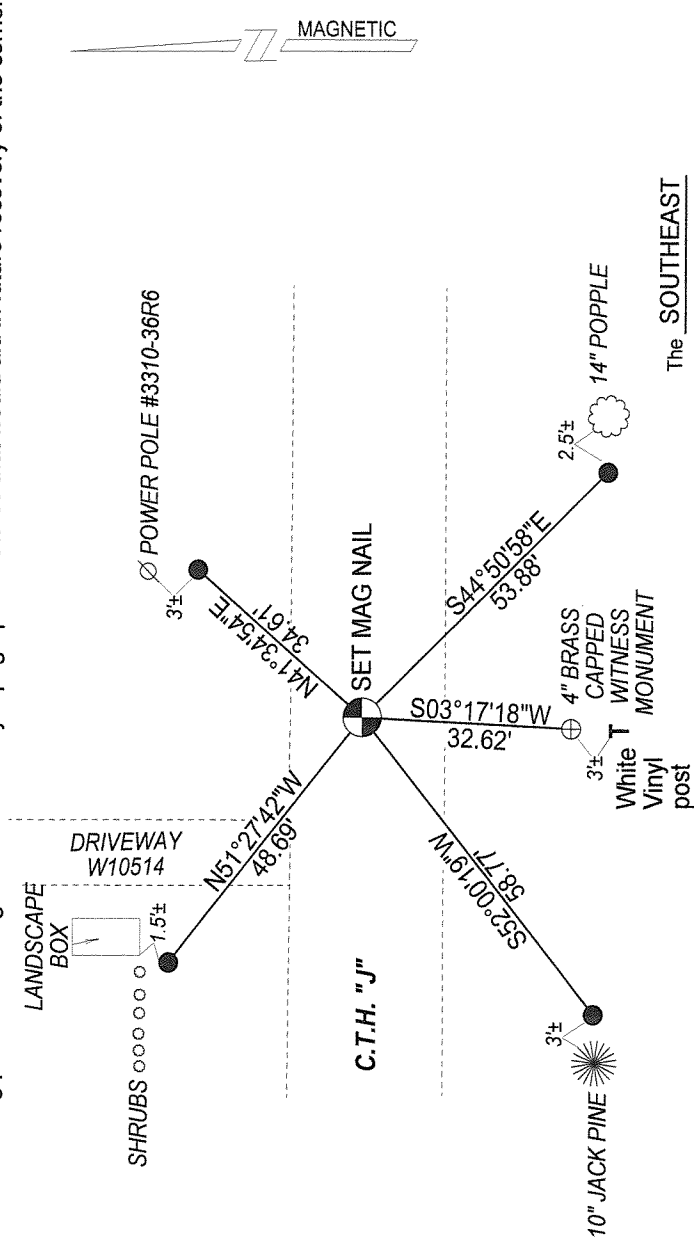
Describe record evidence, recovered physical evidence, occupational evidence, testimonial evidence, and all other evidence considered in the recovery/restoration of the corner.

- Oct. 1860 - H.C. Fellows set original corner post; Hemlock 15", S5°W, 23 links; Hemlock 14", N77°W, 16 links; Birch 10", N64°E, 21 links; Hemlock 8", S59°E, 21 links.
- 1936 - GLO Resurvey - Witness monument set 50 links South of corner location.
- 1979 - Former Surveyor Kelly ties to a Railroad spike at the corner location and found witness monument set by GLO resurvey in 1936. Kelly set new ties as follows: power pole with pk, N7°W, 31.90'; and 10" popple, S14°E, 43.20'.
- 1994 - County Surveyor Tilusy established coordinates for this corner while working in Section 6 T32N-R10E.
- 2012 - I found no evidence of the corner monument. I found the 4" brass capped witness monument set by GLO resurvey. I re-set the corner location per Tilusy's coordinates.

Physical description of the monument set:

I set a 4" mag nail at the corner location and tied it out as follows -

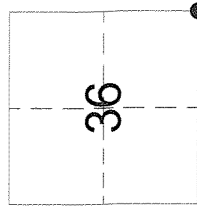
Describe the accessories used to perpetuate the location of the corner. Include a plan view drawing and indicate accessories found/set. Describe measuring point on bearing trees. Show any topographic features that would aid in future recovery of the corner.



The SOUTHEAST

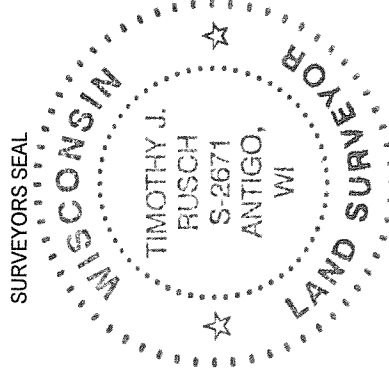
Corner of Section 36

T. 33 N., R. 10 E.
Langlade County, WI



INDEX No. **Z 25** 33-10

● = Location of corner



I, Timothy J. Rusch certify that the corner location shown on this record was determined by me or under my direction and control and that this U.S. Public Land Survey Monument Record is correct and complete to the best of my knowledge and belief.

Timothy J. Rusch 08-17-2012
Signature Date