

CERTIFIED LAND CORNER RESTORATION

Index No. 21

33-11

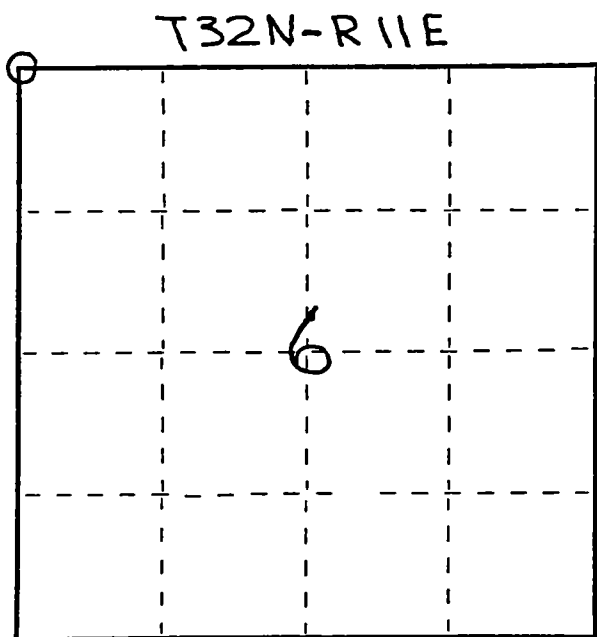
State of Wisconsin }
County of LANGLADE } ss.

I WILLIAM F. KELLY, do hereby certify that on the 25th day of JANUARY, 1979, I found evidence of the N.W. corner of SECT. 6 Township 32, North, Range 11 EAST, Fourth Principal Meridian, as described hereon; and that from this evidence I established a new monument and accessories as described hereon to perpetuate the original location of this corner.

Resident witnesses:

.....
.....
.....

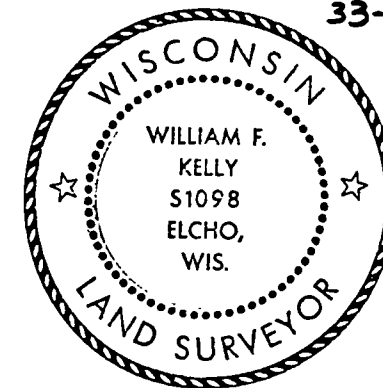
FORM 985 M. C. MILLER CO., MILWAUKEE



○ = Corner monument restored.

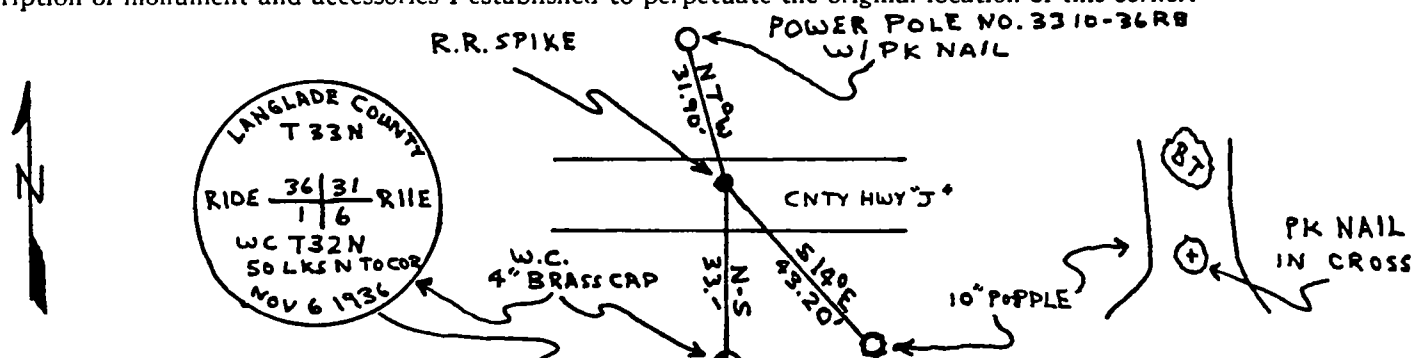
History of original corner establishment:

Description of corner evidence found:
LOCATED W.C. TO N.W. CORNER, SECT. 6, T32N, R11E.
4" BRASS CAP SET IN CONCRETE, EST. IN 1936 RESURVEY



William F. Kelly

Description of monument and accessories I established to perpetuate the original location of this corner.



Dated at ELCHO, Wis., this 25th day of JANUARY, 1979.

Signature William F. Kelly Title COUNTY SURVEYOR Registration No. S-1098
(County Surveyor, Registered Land Surveyor, or other duly authorized official)

Office of Register of Deeds, County of....., I hereby certify that the within instrument was filed in this office for record on the..... day of....., 19..... at..... o'clock..... M.

(Register of Deeds)

By..... Deputy