

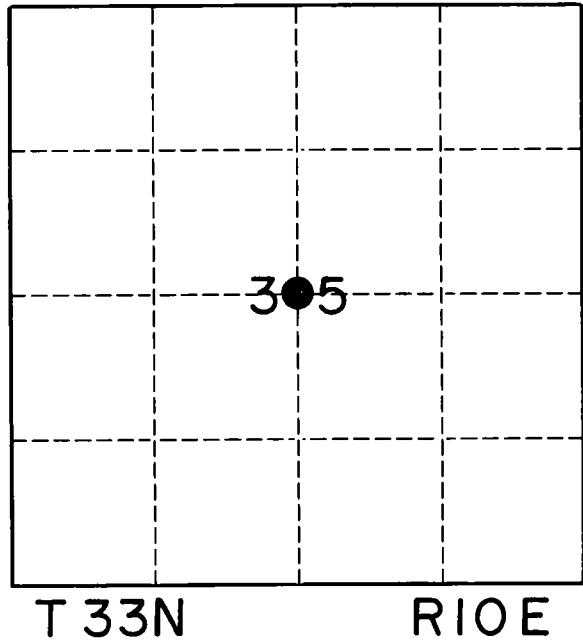
# U. S. PUBLIC LAND SURVEY MONUMENT RECORD

**INSTRUCTIONS:**

This record shall show the location of the corner and shall include all of the following nine elements (a through i).

- (a) Identify the corner by reference to the U.S. public land survey system.  
 O = Corner monument restored.

**This corner was originally set by Hiram C. Fellows in 1860.**



- (b) Describe any record evidence, monument evidence, occupational evidence, testimonial evidence or any other material evidence you considered, and whether the monument was found or placed.

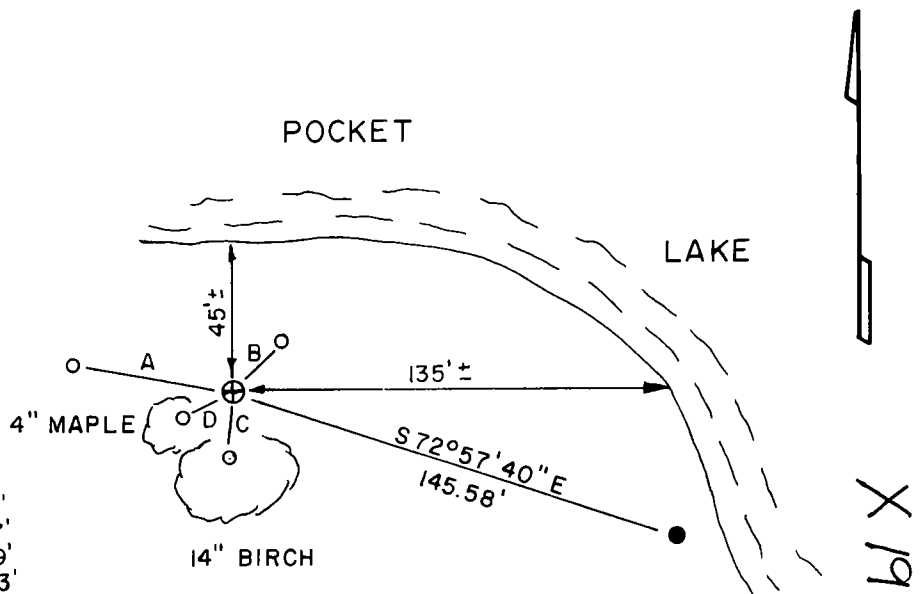
**This corner was set after protracting Section 35. Two other pipes were found near this same location, neither of which was on record. Many errant pipes are located in Section 35 therefore little value was placed on either of the found pipes other than to confirm that this corner is set in the correct area. Volume 5 CSM, Page 31 shows a found pipe at the NW corner of Govt. Lot 3 (which is the Center of Section). This pipe lies S 72° 57' 40" E, 145.58'.**

- (c) In the plan view drawing below, provide reference ties to at least 4 witness monuments, or, if the location is within a municipality, to at least 2 witness monuments. (Witness monuments shall be made of concrete, natural stone, iron or other equally durable material.) Describe witness monuments.

- (d) Show a plan view drawing depicting the relevant monuments and reference ties which is sufficient in detail to enable accurate relocation of the corner monument if the corner monument is disturbed. Indicate north.

- ⊕ SET 1-1/4" I PIPE WITH BRASS CAP
- SET 5/8" I. PIN
- FD I. PIPE

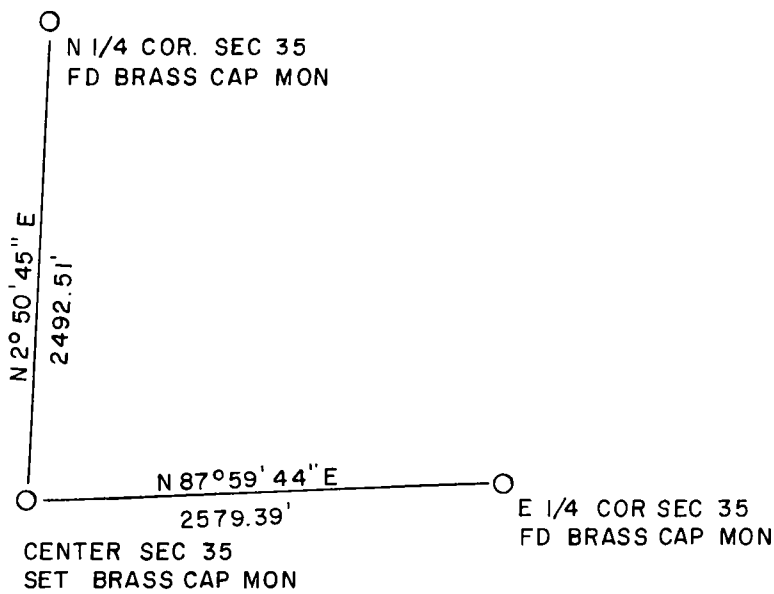
- A = N 80° W - 31.57'
- B = N 45° E - 21.77'
- C = S 4° W - 21.49'
- D = S 64° W - 16.93'



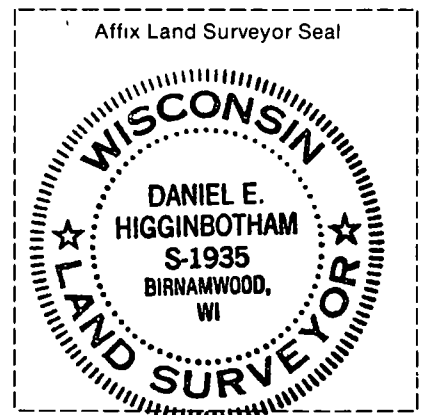
Describe any material discrepancy between the location of the corner as restored or reestablished and the location of that corner as previously restored or reestablished by distance and direction. Show the discrepancy on the plan view drawing under (d), above. Show the distances between the corner as previously restored or reestablished and (1) the corner as restored or reestablished, and (2) to at least 2 of the witness monuments shown on the drawing in (d), above.

(f) Was the corner restored through acceptance of (1) an obliterated evidence location, or, (2) a found perpetuated location.?

(g & h) Was the corner reestablished through lost corner proportionate methods? If so, show the method, including the directions and distances to other public land survey corners used as evidence or used for proportioning in determining the corner location.



Affix Land Surveyor Seal



(i) I, Daniel E. Higginbotham  
(type or print name)

certify that the corner location shown on this record was determined by me or under my direction and control and that this U.S. Public Land Survey Monument Record is correct and complete to the best of my knowledge and belief.

*Daniel E. Higginbotham*  
 Signature

December 3, 1993  
 Date