

# U. S. PUBLIC LAND SURVEY MONUMENT RECORD

**INSTRUCTIONS**

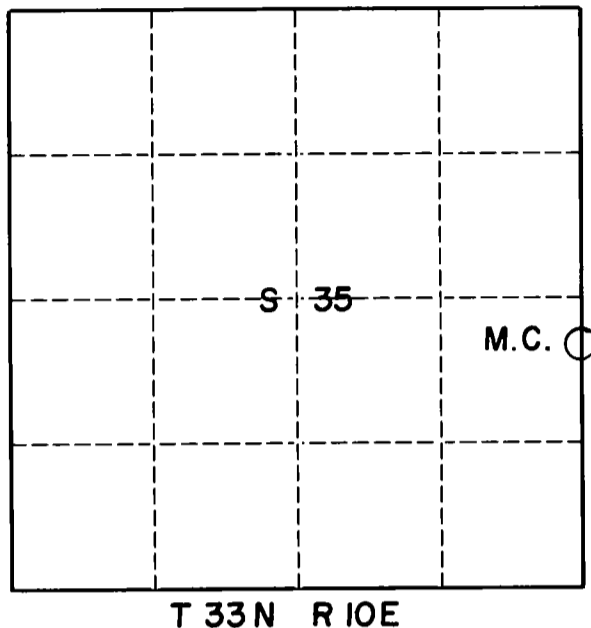
This record shall show the location of the corner and shall include all of the following nine elements (a through i).

- (a) Identify the corner by reference to the U.S. public land survey system.  
 O = Corner monument restored.

Original Survey completed by Hiram C. Fellows, 1860

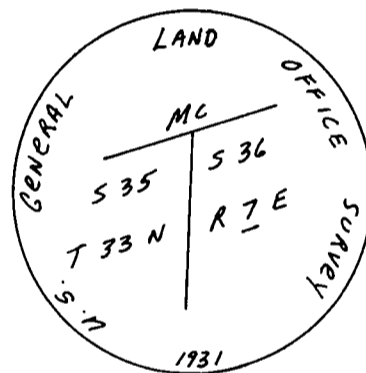
Later GLO work completed

Dan Higginbotham  
 Mark Nelson



- (b) Describe any record evidence, monument evidence, occupational evidence, testimonial evidence or any other material evidence you considered, and whether the monument was found or placed.

I found a 2" iron pipe with cap as called for by the field notes of the Dependent Resurvey, with markings similar to those described in field notes.



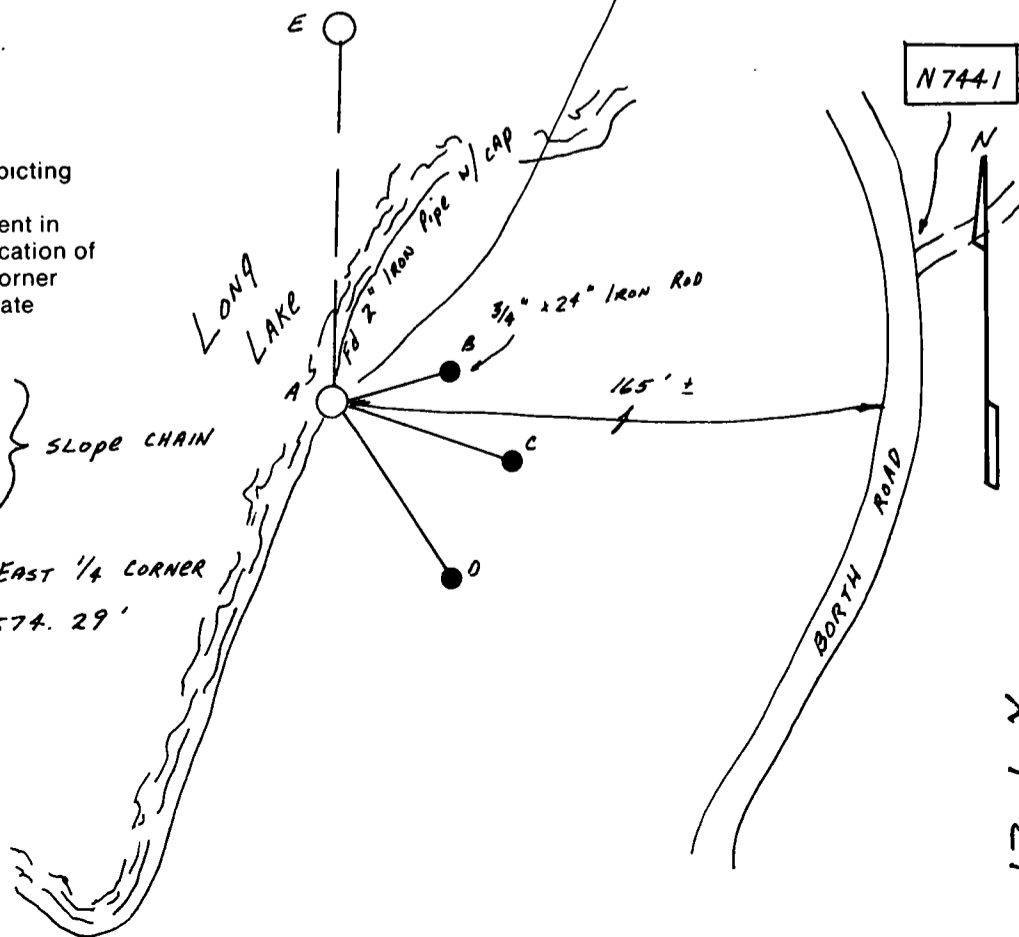
- (c) In the plan view drawing below, provide reference ties to at least 4 witness monuments, or, if the location is within a municipality, to at least 2 witness monuments. (Witness monuments shall be made of concrete, natural stone, iron or other equally durable material.) Describe witness monuments.

- (d) Show a plan view drawing depicting the relevant monuments and reference ties which is sufficient in detail to enable accurate relocation of the corner monument if the corner monument is disturbed. Indicate north.

A-B N 74° E 12.29'  
 A-C S 72° E 21.41'  
 A-D S 34° E 22.30' } SLOPE CHAIN

A-E MEANDER CORNER - EAST 1/4 CORNER  
 N 01° 14' 29" E 574.29'

SCALE 1" = 20'



X-Y 21

