

CERTIFIED LAND CORNER RESTORATION

Index No. Y-2-21

State of Wisconsin }  
County of Lan glade } ss.

History of original corner establishment:

I Raymond J. Hallisy, do hereby certify that on the 3rd day of June, 1978, I found evidence of the M.C. corner of Section 35 & 36 Township 33 10E, North, Range 10E, Fourth Principal Meridian, as described hereon; and that from this evidence I established a new monument and accessories as described hereon to perpetuate the original location of this corner.

Description of corner evidence found:

4" Galvanized pipe with cap. Peck mound.

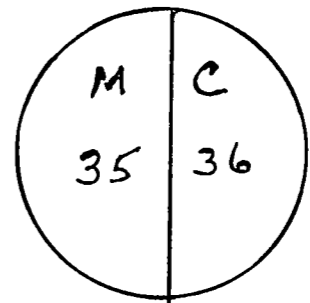
Resident witnesses:

.....  
.....  
.....

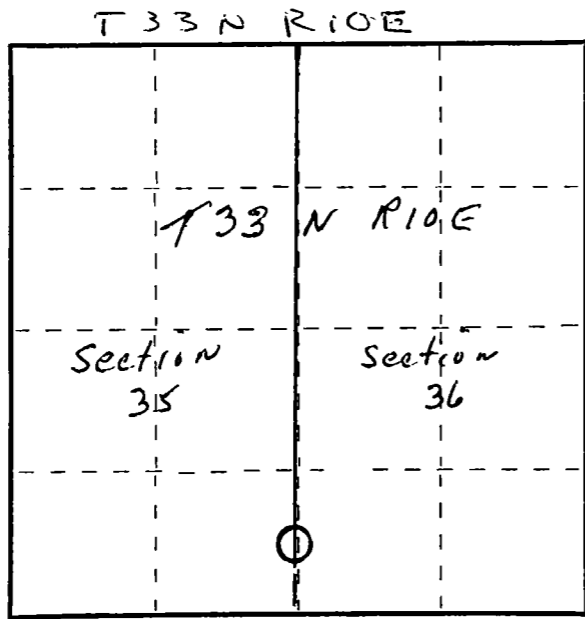
Description of monument and accessories I established to perpetuate the original location of this corner.

New BT's

5" Red Maple      N87E      27' 9"  
7" Hard Maple      N6 SW      21' 5"  
8" Hard Maple      N5E      12'



FORM 985 M. C. MILLER CO. MILWAUKEE



○ = Corner monument restored.

Dated at Antigo, Wis., this 3rd day of June, 1978

Signature Raymond J. Hallisy Title Land Surveyor Registration No. S-685  
(County Surveyor, Registered Land Surveyor, or other duly authorized official)

Office of Register of Deeds, County of \_\_\_\_\_, I hereby certify that the within instrument was filed in this office for record on the \_\_\_\_\_ day of \_\_\_\_\_, 19\_\_\_\_ at \_\_\_\_\_ o'clock \_\_\_\_\_ M.

.....  
(Register of Deeds)

By.....Deputy