

LANGLADE COUNTY U.S. PUBLIC LAND CORNER RESTORATION

The South Quarter corner of Section 35, T. 33 N., R. 10 E., Langlade County, WI.

Corner was: (check all that apply)

43310350020

- Restored through acceptance of an obliterated evidence location.
- Restored through acceptance of a found perpetuated location.
- Determined to be lost and re-established through proportionate methods.
- Show bearings and distances to PLSS corners used for proportioning, and show original distances).
- Restored/recovered/re-established in a location that differs from a previously established position.
- (Show difference in plan view below).
- Check here if additional information is shown on the reverse side of this form.

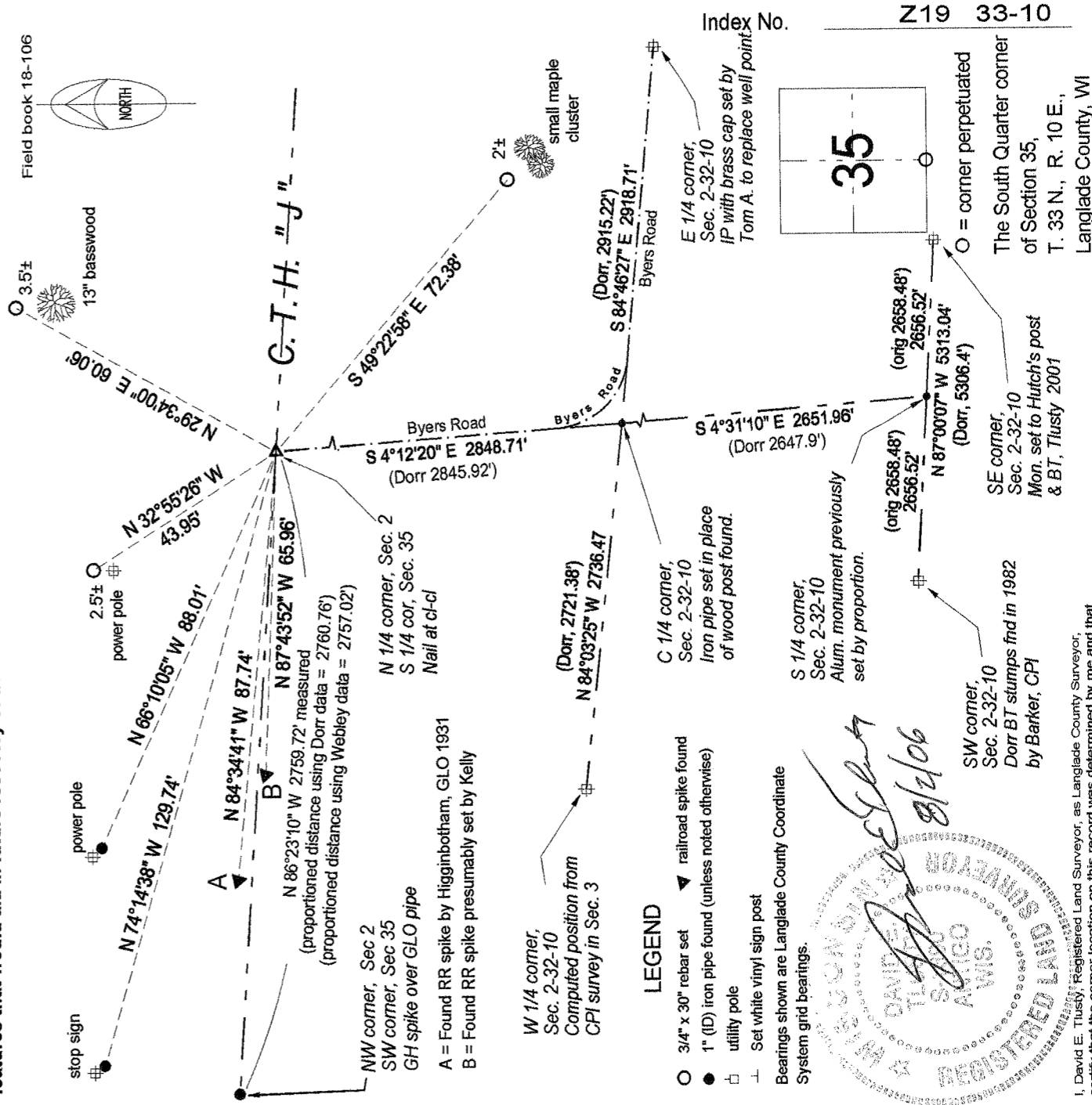
Describe record evidence, recovered physical evidence, occupational evidence, testimonial evidence and all other evidence considered in the recovery/restoration of the corner.

The corner history is documented on the following sheets.

Physical description of the monument set:

Corner is currently marked with PK nail at CLCL. Road construction in July-Aug 2006 will remove nail.

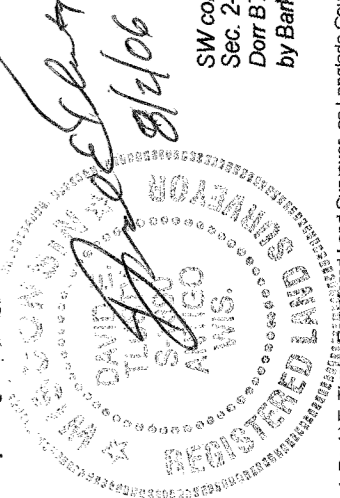
Describe the accessories used to perpetuate the corner. Include a plan view drawing and accessories found/set. Describe measuring point on bearing trees. Show any topographic features that would aid in future recovery of the corner.



LEGEND

- 3/4" x 30" rebar set
- 1" (ID) iron pipe found (unless noted otherwise)
- utility pole
- ⊥ Set white vinyl sign post

Bearings shown are Langlade County Coordinate System grid bearings.



I, David E. Tlusty, Registered Land Surveyor, as Langlade County Surveyor, certify that the corner location on this record was determined by me and that this U.S. Public Land Survey Monument Record is correct to the best of my knowledge and belief.

○ = corner perpetuated
The South Quarter corner of Section 35, T. 33 N., R. 10 E., Langlade County, WI

SE corner, Sec. 2-32-10 Mon. set to Hutch's post & BT, Tlusty 2001

SW corner, Sec. 2-32-10 Dorr BT stumps fnd in 1982 by Barker, CPI

35

E 1/4 corner, Sec. 2-32-10
IP with brass cap set by Tom A. to replace well point

(orig 2658.48')
2656.52'
N 87° 00' 07" W 5313.04'
(Dorr, 5306.4')

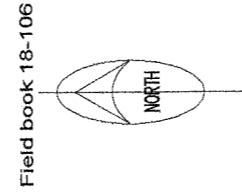
S 4° 31' 10" E 2651.98'
(Dorr 2647.9')

C 1/4 corner, Sec. 2-32-10
Iron pipe set in place of wood post found.

(Dorr, 2721.38')
N 84° 03' 25" W 2736.47'

N 1/4 corner, Sec. 2
S 1/4 cor, Sec. 35
Nail at cl-cl

NW corner, Sec 2
SW corner, Sec 35
GH spike over GLO pipe

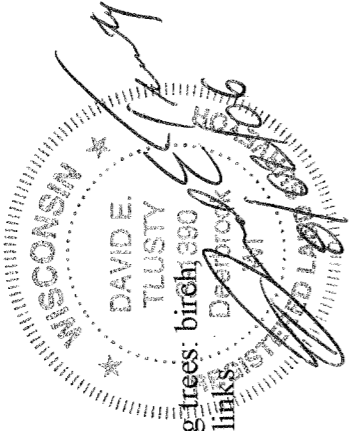


LANGLADE COUNTY
U.S. PUBLIC LAND CORNER RESTORATION

History
of the Quarter corner common to
Section 2, T32N, R10E and Section 35, T33N, R10E

In 1859, U.S. Deputy Surveyor Hiram Fellows surveyed the township line and ran West between Sections 2 & 35 as follows:

Chains	Description
1.50	Over Lake and Set Meander post....
8.52	Lake and Set Meander post....
16.27	Over Lake and Set Meander post....
40.00	(This corner) "Set quarter section post" and marked bearing trees: birch, 1890 12", N36°W, 29 links and a birch, 10", S52°W, 22 links
76.00	Enter Cedar Swamp....
80.00	Set post common to Sections 2, 3, 34 & 35



In June, 1902, Webley (FB126, Pg. 34) ran east from the SW corner of Section 35 and at 66.55 ½ chains "fell 85 lks South of Meander cor on Long Lake. North BT standing. Set stake. New BT Hem. 10, S9°W, 24 lks. Webley was doing a survey of the road between T32N and T33N. He didn't need this quarter corner but did find the evidence of the original MC on the West side of the lake. He also notes that at the Southwest corner of Section 35 there were: "two orig BT standing".

In 1908, (FB96, Pgs. 131 & 132) B.F. Dorr subdivided Section 2. He started at the section corner to the West, ran east, stated that he "Did not find it" (this quarter corner) and continued east, a total of 66.65 chains "to Long Lake". Finding no evidence of this quarter corner, he proportioned between the Section corner west and Long Lake @ 66.65 chains vs. 63.73 chains original measure and mentions two bearing trees that he marked at this corner: an elm, 10", N73°E, 27 links and a hemlock, 5", N41°W, 37 ¼ links. He then used this corner for his work in Section 2. Dorr apparently found evidence of the MC mentioned by Webley only 6 years earlier in 1902.

In May, 1912, Byers Road in Section 2 was laid out, according to information in Town of Peck records. The road appears in Bakers Atlas of 1927.

In June, 1919, Webley (FB100, Pg. 73) surveyed a lot on Long Lake beginning at a point 929 East and 1475 North "of ¼ S. cor. Bet Sec 2-35, T32-33-10". This indicates there was evidence of the quarter corner in 1919.

In July, 1921, Webley (FB100, Pg. 74) did a survey for a lot on the West side of Long Lake and commenced "at meander corner on West bank of Long Lake". This indicates that there was evidence of the meander corner in 1921.

In 1926, Henry Olk surveyed Evensons Plat in Section 35. Evensons Plat shows a portion of the North-South Quarter line of Section 35. Previous re-tracement by others (Woorster and Goslin) of Evensons Plat reveals that the North-South Quarter line shown on the Evensons Plat points towards the center of Byers Road at the Hwy "J" intersection. Olk presumably found evidence of the quarter corner as it was used only 7 years earlier by Webley.

In Aug., 1929. (FB122, PG.124), Malcolm Hutchinson started at the section corner to the West, ran east. "66.74 Lake, 71.18 over Lake, 79.33 MC on W side of Moser Lake....". He proportioned to establish a quarter corner position by using the SW corner of Section 35 and the Moser Lake MC at 79.33 chains vs. 78.5 chains original measure. He set a pump point for the corner. He then proceeded to subdivide a portion of Section 35. It appears that Hutchinson missed any evidence of the quarter corner or the MC on the West side of Long Lake.

In 1931, Arthur W. Brown, U.S. Cadastral Engineer, made a Dependent Resurvey of a portion of the South boundary of T33N, R10E and described this corner as: "The ¼ sec. cor., which is marked by an iron pipe, 1 ½" ins. Diam., set flush with the surface of ground in S. wheel track of private road, reputed to have been established by County Surveyor in connection with lake shore lot surveys in sec. 35. As numerous small holdings in sec. 35 depend on this corner position, it is accepted as the best evidence of the original corner." It appears that Brown found and accepted Hutchinson's position and monument.

LANGLADE COUNTY
U.S. PUBLIC LAND CORNER RESTORATION

History
of the Quarter corner common to
Section 2, T32N, R10E and Section 35, T33N, R10E

In 1980, former surveyor Kelly did a CSM (V2, Pg 168) several hundred feet north of this quarter corner. He didn't show this corner but identified the west line of his survey as the N-S ¼ line.

In 1983, Kelly did a survey (CSM 3-75) of two lots on the West side of Long Lake and called this corner a "PK nail, found in place". He shows a distance of 2527.72' between a MC 101.10' west of the SE corner of Section 35, and this quarter corner.


In 1985, Kelly did a 24 acre survey (CSM 3-176) to the Northeast of this corner and called this corner a "PK nail, found in place".

In 1992, Dan Higginbotham, set a "RR spike which corresponds to the Dependent Resurvey."

02/02/2006 D. Thusty after several years of research, field work and analysis of the conflicting monuments in this area, I accept the intersection of the centerlines of CTH "J" and Byers Road as the best evidence of the quarter corner location as established by B. F. Dorr in 1908. Dorr used proper procedures to establish this "lost" corner and the corners he used for proportioning (section corner and MC on west side of Long Lake) both had good evidence of the original government survey bearing trees as noted by Webley only 6 years earlier. This position is in agreement with Dorr's work in Section 2 as shown by the comparative measurements on my tie sketch. This position is 87.74 feet from the Hutchinson location as shown on the tie sketch. I can only assume that Hutchinson, who I generally consider to have been a very good surveyor, may not have been aware of the previous work by Webley and Dorr and he apparently missed any remaining evidence of the MC on the west side of Long Lake.

I, David E. Thusty, Registered Land Surveyor, as Langlade County Surveyor, certify that the corner location on this record was determined by me and that this U.S. Public Land Survey Monument Record is correct to the best of my knowledge and belief.

August 2, 2006


David E. Thusty
Langlade County Surveyor
Wisconsin Registered Land Surveyor S-1390

5/8/07 D. THUSTY. GET CORRUPTED SPIKE IN NEW PAULMENT, FROM THESE TIES.