

# U. S. PUBLIC LAND SURVEY MONUMENT RECORD

**INSTRUCTIONS:**

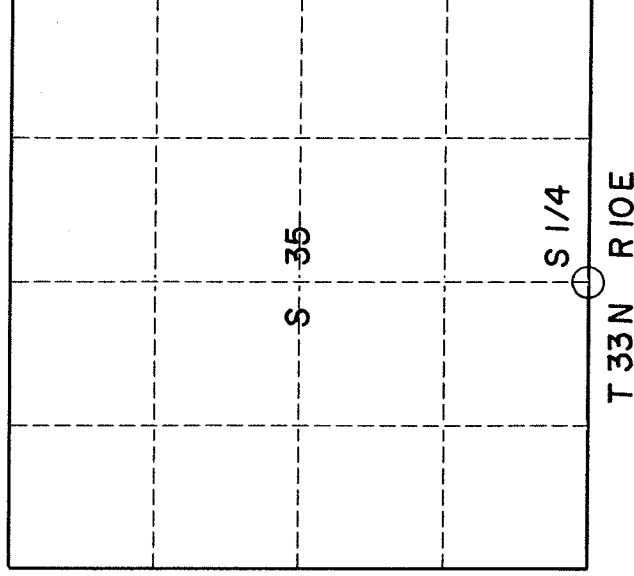
This record shall show the location of the corner and shall include all of the following nine elements (a through i).

- (a) Identify the corner by reference to the U.S. public land survey system.
- O = Corner monument restored.

**Original Survey completed by Hiram C. Fellows, 1860**

**Later GLO work completed**

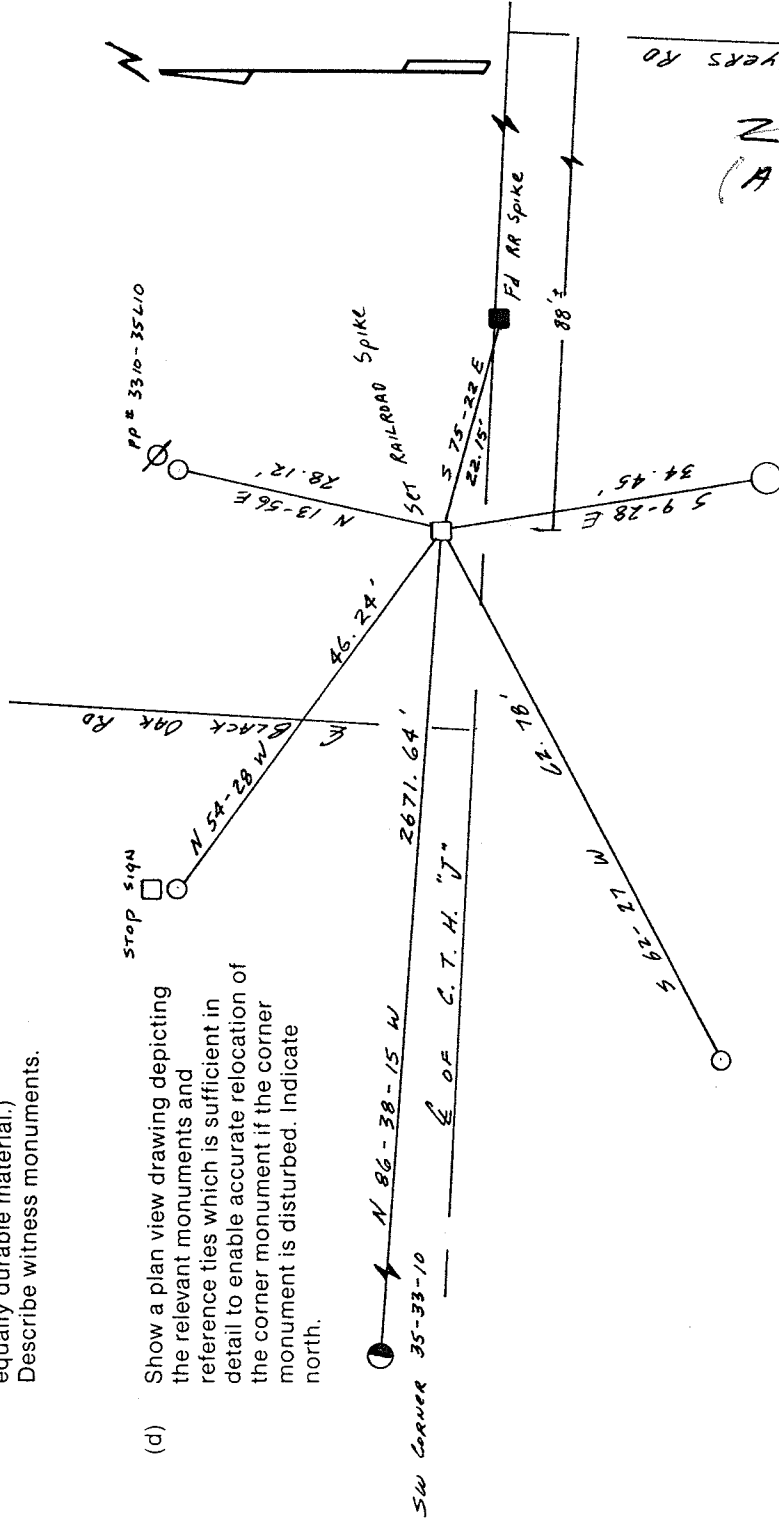
**Dan Higginbotham  
Mark Nelson  
Witnesses**



- (b) Describe any record evidence, monument evidence, occupational evidence, testimonial evidence or any other material evidence you considered, and whether the monument was found or placed.

An Existing RR spike was found as shown below. However, no tie sheet or chain of evidence was linked to existing spike. Utilizing the Dependent Resurvey of Section 35 as a basis for my work, I set another RR spike which corresponds to the Dependent Resurvey. This position also checks well with the East line of Evenson's Plat to the North.

- (c) In the plan view drawing below, provide reference ties to at least 4 witness monuments, or, if the location is within a municipality, to at least 2 witness monuments. (Witness monuments shall be made of concrete, natural stone, iron or other equally durable material.) Describe witness monuments.



SCALE: 1" = 20'

O 1" x 24" Iron Pipe SET

4" Alum. Witness Mon.

(A 19 (32-10))  
Z 19 (33-10)

Describe any material discrepancy between the location of the corner as restored or reestablished and the location of that corner as previously restored or reestablished by distance and direction. Show the discrepancy on the plan view drawing under (d), above. Show the distances between the corner as previously restored or reestablished and (1) the corner as restored or reestablished, and (2) to at least 2 of the witness monuments shown on the drawing in (d), above.

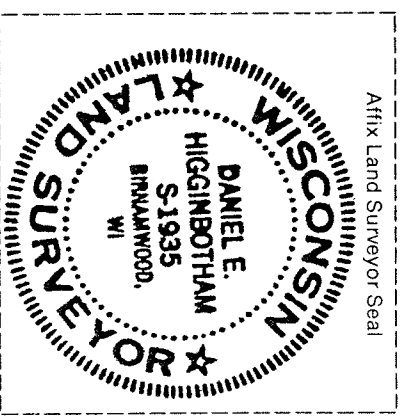
As stated above, a RR spike unsupported by a U.S. Public Land Survey Monument Record was found S 75° 22' E, 22.15 feet from my monumented location.

- (f) Was the corner restored through acceptance of (1) an obliterated evidence location, or, (2) a found perpetuated location?
1. Through acceptance of an obliterated evidence location.

- (g & h) Was the corner reestablished through lost corner proportionate methods? If so, show the method, including the directions and distances to other public land survey corners used as evidence or used for proportioning in determining the corner location.

NO.

- (i) Daniel E. Higginbotham  
(Type or print name)  
certify that the corner location shown on this record was determined by me or under my direction and control and that this U.S. Public Land Survey Monument Record is correct and complete to the best of my knowledge and belief.



*Dan Higginbotham*  
Signature

August 27, 1992  
Date