

# U.S. PUBLIC LAND SURVEY MONUMENT RECORD

(Prepared and as required by S. A-E 7.08 WI Administrative Code)

The Center 1/4 corner of Section 34, T. 33 N., R. 10 E., Langlade County, WI  
43310342020

**Corner was: (check all that apply)**

- Restored through acceptance of an obliterated evidence location.
  - Restored through acceptance of a found perpetuated location.
  - Determined to be lost and re-established through proportionate methods.  
 (Show bearings and distances to PLSS corners used for proportioning.)
  - Restored/recovered/reestablished in a location that differs from a previously established position. (Show difference in plan view below.)
  - Check here if additional information is shown on the reverse side of this form.
- Describe record evidence, recovered physical evidence, occupational evidence, testimonial evidence and all other evidence considered in the recovery/restoration of the corner.**

In 1905 E.S. Brooks, County Surveyor, subdivided Section 34 and set Center 1/4 corner with the following ties: Cedar 16 S36°W 16 links  
 Hemlock 18 N58°W 19 3/4 links  
 In February of 1996 Glen Barker RLS No. 1682 located end of a fenceline at Center 1/4 corner location. Used location to verify North 1/4 corner location. (See North 1/4 tie sheet for verification of Center 1/4 corner location.) The Center 1/4 corner location is shown on Barkers Survey Map (Record No. 30468). We traversed to calculated position from Barkers map and set a 2" iron pipe brass capped monument at end of old wood post fenceline. No evidence of Brooks original ties were found. Accepted location as Center 1/4 corner set by Brooks and tied out as shown below.

**Physical description of the monument set:**

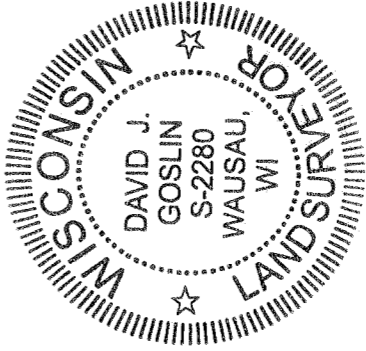
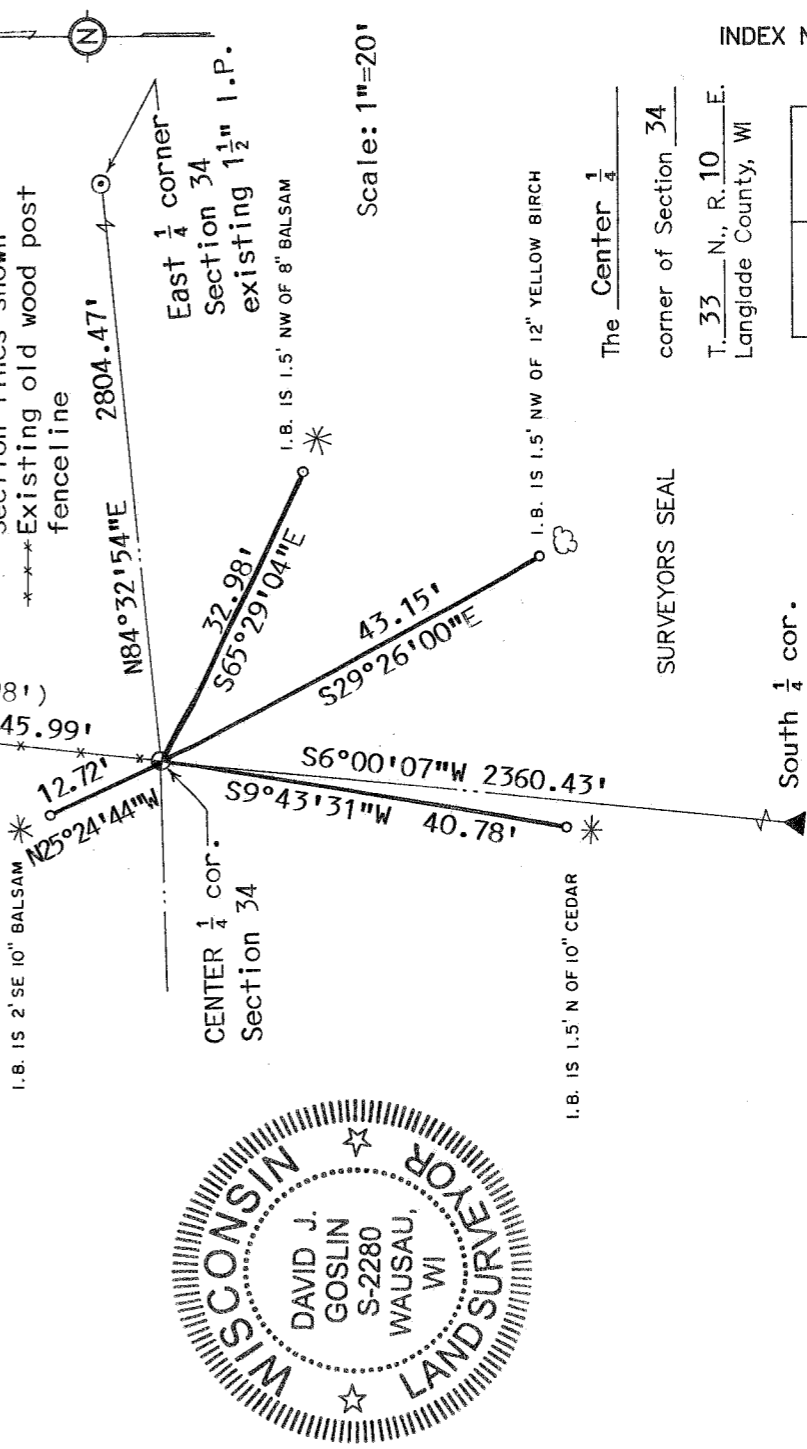
Set 2" x 30" iron pipe with Langlade County brass cap flush with ground and set white vinyl sign post 1 foot south of monument

Describe the accessories used to perpetuate the location of the corner. Include a plan view drawing and indicate accessories found/set. Describe measuring point on bearing trees. Show any topographic features that would aid in future recovery of the corner. North 1/4 corner.  
 2 1/4" alum. pipe

Center 1/4 corner is 710± south of Center of Forest Road

**LEGEND**

- o Set 3/4"x30" re-bar
- ⊙ 2" x 30" iron pipe with brass cap
- All witness trees have yellow bearing tree signs
- Bearings referenced to quarter Section lines shown
- \*\*\*Existing old wood post fenceline



Scale: 1"=20'

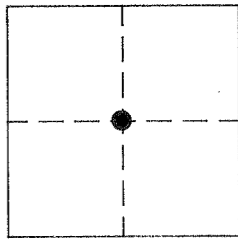
SURVEYORS SEAL

The Center 1/4

corner of Section 34

T. 33 N., R. 10 E.  
 Langlade County, WI

INDEX No.



X15  
33-10

● = Location of corner

South 1/4 cor.  
 Railroad spike

I, David J. Goslin, certify that the corner location shown on this record was determined by me or under my direction and control and that this U.S. Public Land Survey Monument Record is correct and complete to the best of my knowledge and belief.

David J. Goslin 3-28-03  
 Signature Date