

CERTIFIED LAND CORNER RESTORATION

Index No. W-11

State of Wisconsin }  
County of LANGLADE } ss.

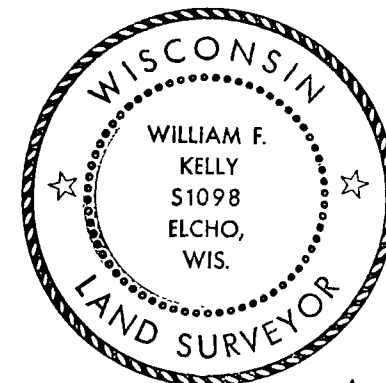
I William F. Kelly, do hereby certify that on the 13<sup>th</sup> day of MARCH, 1980, I found evidence of the N 1/8 corner - S 1/4 line corner of sect 33 Township 33, North, Range 10 EAST, Fourth Principal Meridian, as described hereon; and that from this evidence I established a new monument and accessories as described hereon to perpetuate the original location of this corner.

Resident witnesses:

.....  
.....  
.....

History of original corner establishment:

No Evidence of any previous corner establishment



William F. Kelly

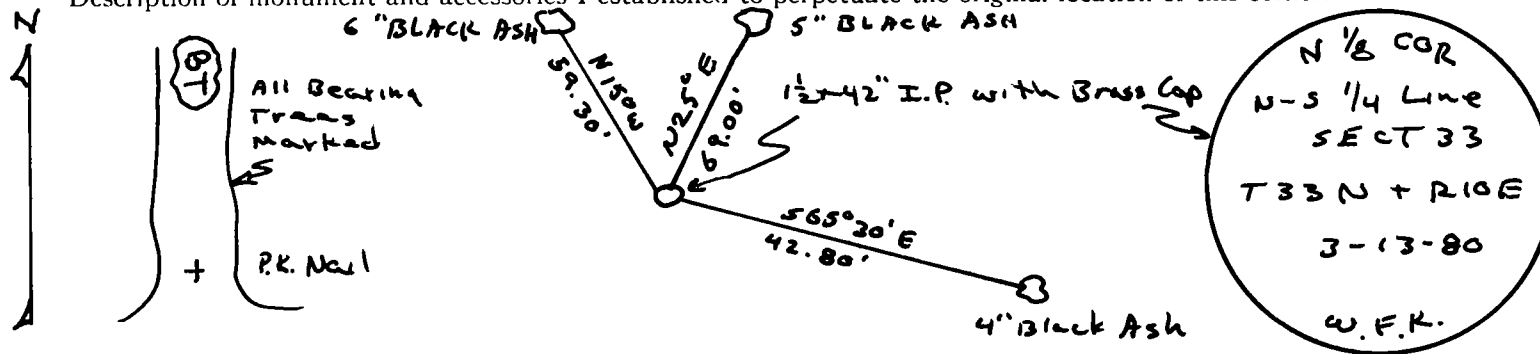
Description of corner evidence found:

Established corner at the mid point between the center of sect 33 and the North 1/4 corner sect 33

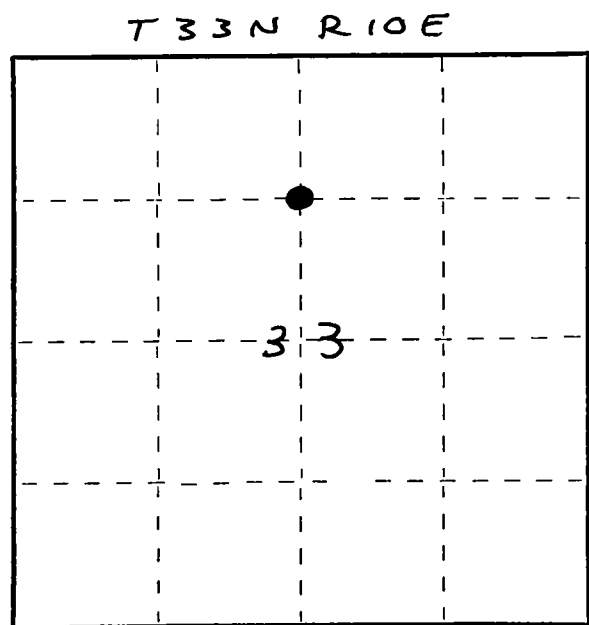
set 1 1/2 I.P. with Brass Cap and marked witness trees

corner located in a Black Ash Swamp + Tag Alcher Swamp 4x4 cedar post set next to corner

Description of monument and accessories I established to perpetuate the original location of this corner.



FORM 985 H. C. MILLER CO. - MILWAUKEE



○ = Corner monument restored.

Dated at ELCHO, Wis., this 15<sup>th</sup> day of MARCH, 1980.

Signature William F. Kelly Title County Surveyor Registration No. 51098  
(County Surveyor, Registered Land Surveyor, or other duly authorized official)

Office of Register of Deeds, County of ....., I hereby certify that the within instrument was filed in this office for record on the ..... day of ....., 19..... at ..... o'clock ..... M.

(Register of Deeds)

By ..... Deputy