

CERTIFIED LAND CORNER RESTORATION

Index No. w-13

State of Wisconsin }  
County of LANGLADE } ss.

I William F. Kelly, do hereby certify that on the 25<sup>th</sup> day of February, 1980, I found evidence of the North 1/8 corner of SECT 33 + 34 Township 33, North, Range 10 E, Fourth Principal Meridian, as described hereon; and that from this evidence I established a new monument and accessories as described hereon to perpetuate the original location of this corner.

Resident witnesses:

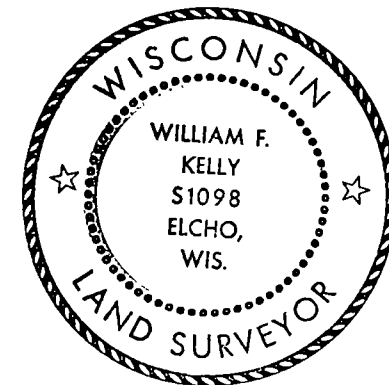
Robert Hess Sr.

History of original corner establishment:  
Original corner set by Hiram Fellows in Oct 1860

No Evidence of corner could be found

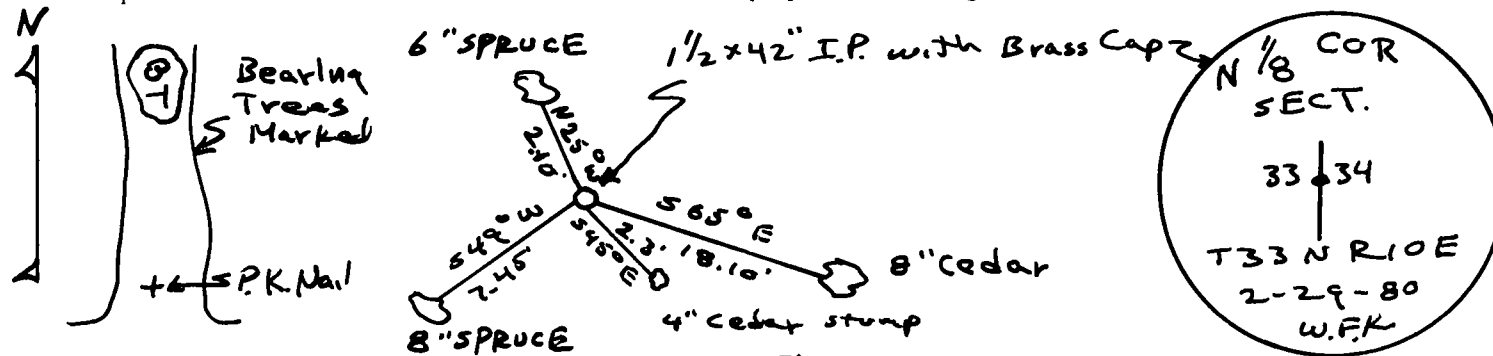
Description of corner evidence found:

Set 1 1/2" I.P. with Brass Cap at mid-point between sect. cor and 1/4 Sect Cor.



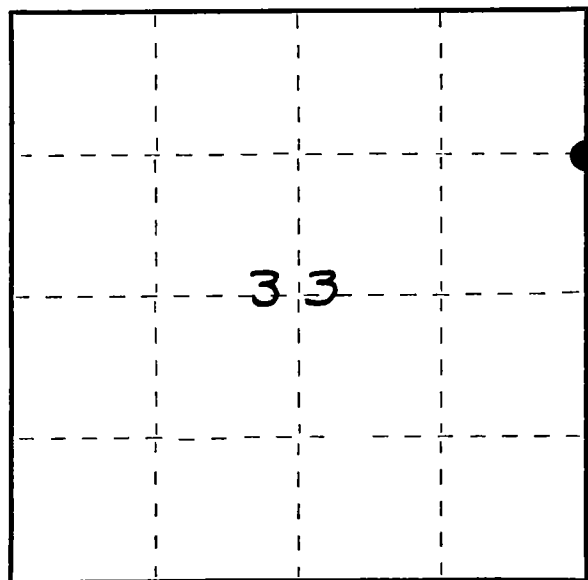
William F. Kelly

Description of monument and accessories I established to perpetuate the original location of this corner.



FORM 985 H. C. MILLER CO., MILWAUKEE

T 33 N R 10 E



○ = Corner monument restored.

Dated at ELCHO, Wis., this 6<sup>th</sup> day of MARCH, 1980.

Signature William F. Kelly Title County Surveyor Registration No. S 1098  
(County Surveyor, Registered Land Surveyor, or other duly authorized official)

Office of Register of Deeds, County of \_\_\_\_\_, I hereby certify that the within instrument was filed in this office for record on the \_\_\_\_\_ day of \_\_\_\_\_, 19\_\_\_\_ at \_\_\_\_\_ o'clock \_\_\_\_\_ M.

(Register of Deeds)

By \_\_\_\_\_ Deputy