

CERTIFIED LAND CORNER RESTORATION

Index No. X-12

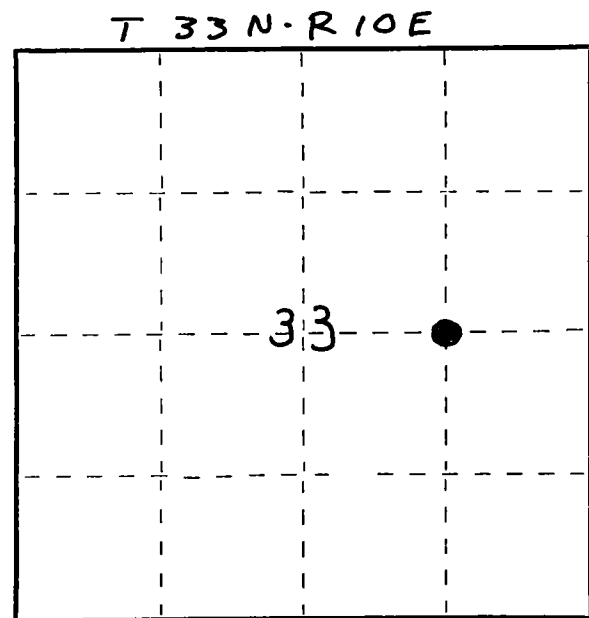
State of Wisconsin }
 County of LANGLADE } ss.

I William F. Kelly, do hereby certify that on the 12th day of MARCH, 1980, I found evidence of the E 1/8 corner of E-W 1/4 Line Sect 33 Township 33, North, Range 10 EAST, Fourth Principal Meridian, as described hereon; and that from this evidence I established a new monument and accessories as described hereon to perpetuate the original location of this corner.

Resident witnesses:

.....

FORM 985 R. C. MILLER CO. MILWAUKEE



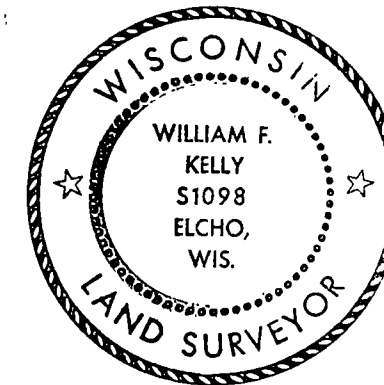
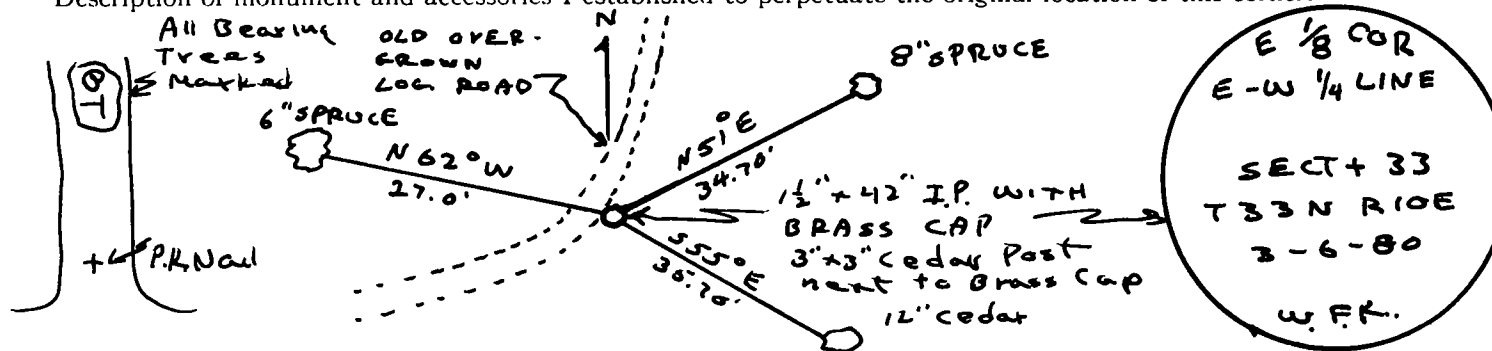
○ = Corner monument restored.

History of original corner establishment:
No Previous Records of corner being set

Description of corner evidence found:
Established corner from subdivision of Sect. 33 T 33 N R 10 E

Set 1 1/2" x 42" I.P. with Brass Cap. corner is located in a Cedar and Spruce Swamp.

Description of monument and accessories I established to perpetuate the original location of this corner.



William F. Kelly

Dated at ELCHO, Wis., this 14th day of MARCH, 1980.

Signature William F. Kelly Title County Engineer Registration No. 5-1098
 (County Surveyor, Registered Land Surveyor, or other duly authorized official)

Office of Register of Deeds, County of, I hereby certify that the within instrument was filed in this office for record on the day of, 19..... at o'clock M.

.....
 (Register of Deeds)

By..... Deputy