

CERTIFIED LAND CORNER RESTORATION

Index No. X-13

State of Wisconsin }
County of LANGLADE } ss.

I William F. Kelly, do hereby certify that on the 25th day of January, 1980, I found evidence of the EAST 1/4 corner of SECT. 33 Township 33, North, Range 10 E., Fourth Principal Meridian, as described hereon; and that from this evidence I established a new monument and accessories as described hereon to perpetuate the original location of this corner.

Resident witnesses:

Robert Hoss Sr.

History of original corner establishment:

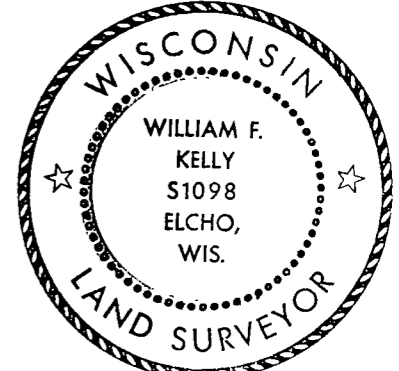
Original Corner set by Hiram Fellows in Oct 1860

Corner identified by Genisot Eng. of Rhinelander in the 1950's.

Description of corner evidence found:

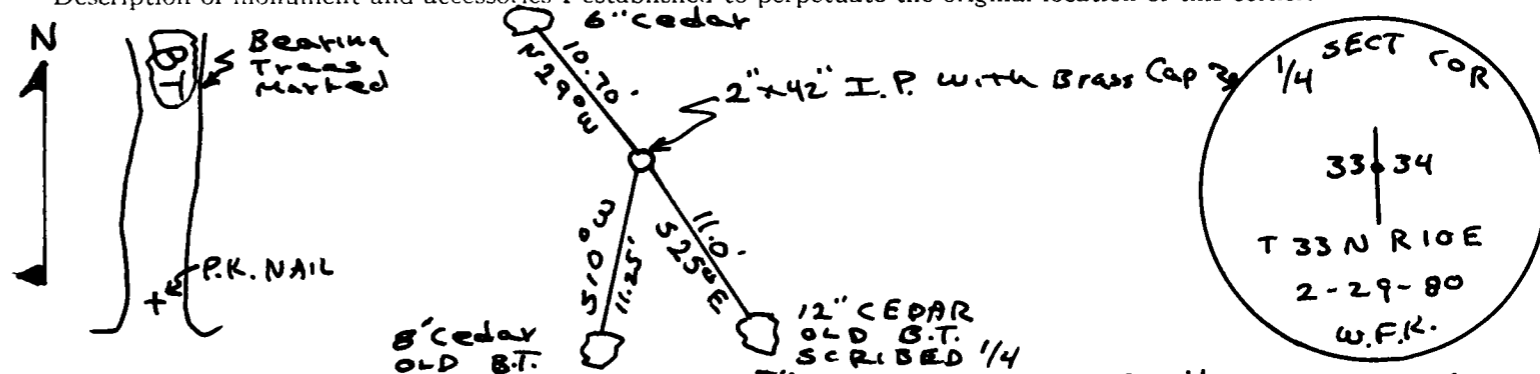
Located 4x4 cedar post and Two Bearing Trees

Set 2" IP WITH BRASS CAP AT CORNER LOCATION. SET 4x4 Post next to BRASS CAP



William F. Kelly

Description of monument and accessories I established to perpetuate the original location of this corner.



Dated at ELCHO, Wis., this 6th day of MARCH, 1980.

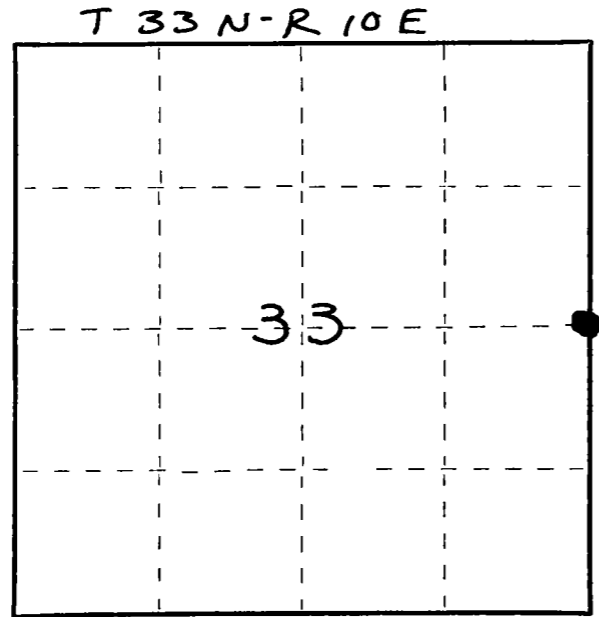
Signature William F. Kelly Title County Surveyor Registration No. 51098
(County Surveyor, Registered Land Surveyor, or other duly authorized official)

Office of Register of Deeds, County of _____, I hereby certify that the within instrument was filed in this office for record on the _____ day of _____, 19____ at _____ o'clock _____ M.

(Register of Deeds)

By _____ Deputy

FORM 985 M C MILLER CO. MILWAUKEE



○ = Corner monument restored.