

CERTIFIED LAND CORNER RESTORATION

Index No. 4-11

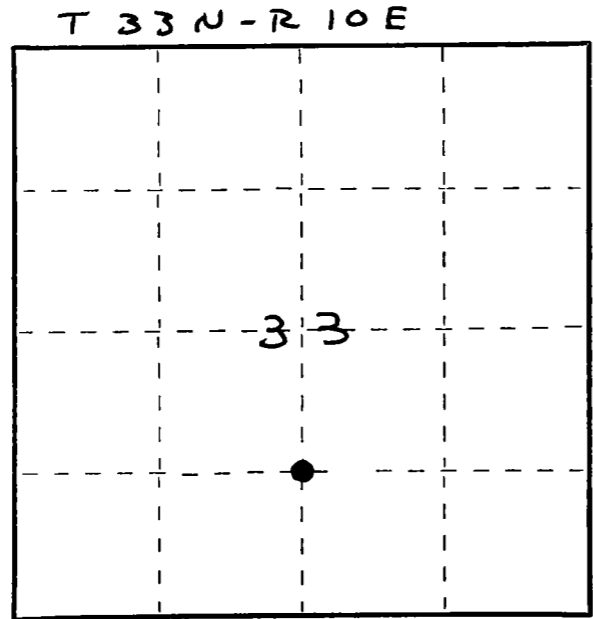
State of Wisconsin }  
County of LANGLADE } ss.

I, William F. Kelly, do hereby certify that on the 13<sup>th</sup> day of MARCH, 1980, I found evidence of the S 1/2 Cor. on N-S 1/4 Line corner of sect 33 Township 33, North, Range 10 EAST, Fourth Principal Meridian, as described hereon; and that from this evidence I established a new monument and accessories as described hereon to perpetuate the original location of this corner.

Resident witnesses:

.....  
.....  
.....

FORM 985 H. C. MILLER CO., MILWAUKEE



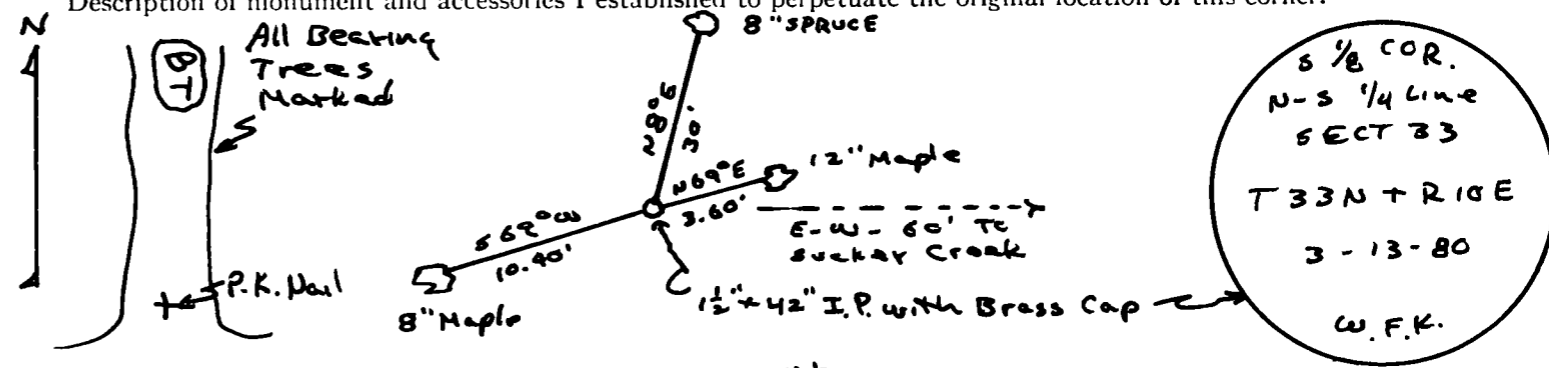
○ = Corner monument restored.

History of original corner establishment:  
No evidence of the corner establishment is available

Description of corner evidence found:  
Corner established at the mid point between the center of sect 33 and the S-1/4 Cor. Sect 33.

set 1 1/2 I.P. with Brass Cap and Marked witness Trees  
corner is in a Black Ash and The Alder Swamp, AT Edge of High land

Description of monument and accessories I established to perpetuate the original location of this corner.



Dated at ELCHO, Wis., this 15<sup>th</sup> day of MARCH, 1980.

Signature William F. Kelly Title County Surveyor Registration No. 51098  
(County Surveyor, Registered Land Surveyor, or other duly authorized official)

Office of Register of Deeds, County of....., I hereby certify that the within instrument was filed in this office for record on the.....day of....., 19..... at..... o'clock..... M.

.....  
(Register of Deeds)

By..... Deputy