

CERTIFIED LAND CORNER RESTORATION

Index No. W-9

State of Wisconsin }  
County of LANGLADE } ss.

I WILLIAM F. KELLY, do hereby certify that on the 20<sup>TH</sup> day of FEBRUARY, 1980, I found evidence of the N 1/8 corner of SECTION 32 & 33 Township 33, North, Range 10 EAST, Fourth Principal Meridian, as described hereon; and that from this evidence I established a new monument and accessories as described hereon to perpetuate the original location of this corner.

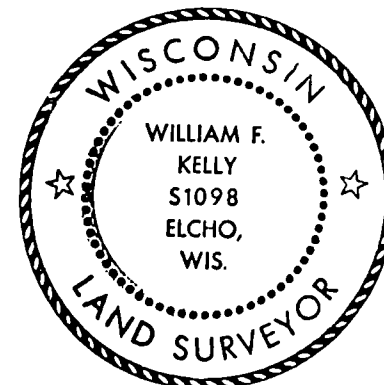
Resident witnesses:

History of original corner establishment:

ORIGINAL CORNER SET HIRAM FELLOWS IN OCTOBER 1860.

Description of corner evidence found:

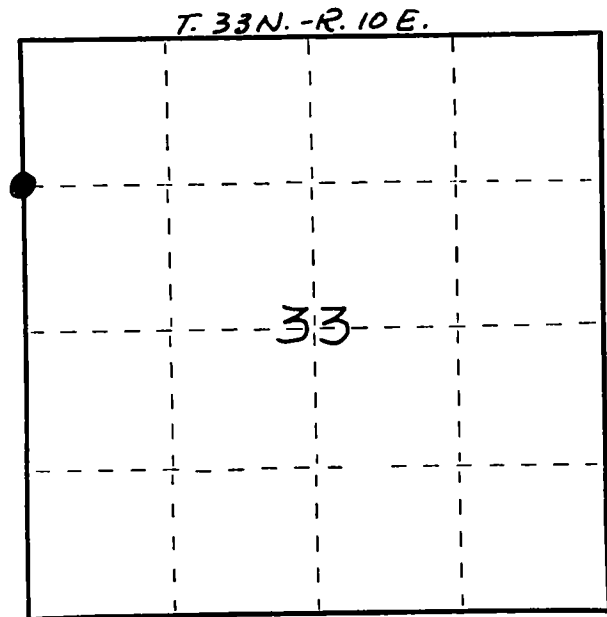
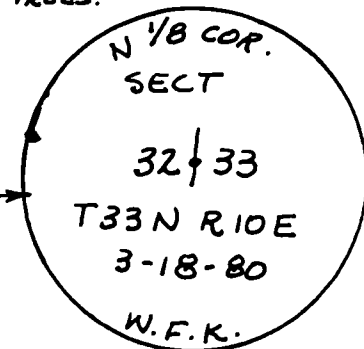
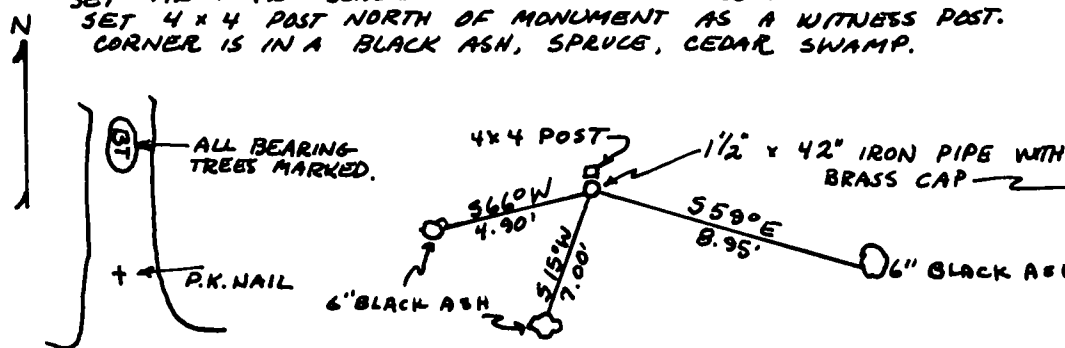
LOCATED 4 x 4 CEDAR POST AND 3 EXISTING BEARING TREES CALLED FOR IN RAY HALLISEYS NOTES.



*William F. Kelly*

Description of monument and accessories I established to perpetuate the original location of this corner.

SET 1 1/2" x 42" BLACK IRON PIPE WITH BRASS CAP. REMARKED BEARING TREES.  
SET 4 x 4 POST NORTH OF MONUMENT AS A WITNESS POST.  
CORNER IS IN A BLACK ASH, SPRUCE, CEDAR SWAMP.



○ = Corner monument restored.

Dated at ELCHO, Wis., this 13<sup>TH</sup> day of MARCH, 1980.

Signature William F. Kelly Title COUNTY SURVEYOR Registration No. S1098  
(County Surveyor, Registered Land Surveyor, or other duly authorized official)

Office of Register of Deeds, County of \_\_\_\_\_, I hereby certify that the within instrument was filed in this office for record on the \_\_\_\_\_ day of \_\_\_\_\_, 19\_\_\_\_ at \_\_\_\_\_ o'clock \_\_\_\_\_ M.

(Register of Deeds)

By \_\_\_\_\_ Deputy

FORM 985 - F. W. WILSON CO. MILWAUKEE