

# U.S. PUBLIC LAND SURVEY MONUMENT RECORD

(Prepared and as required by S. A-E 7.08 WI Administrative Code)

Corner was: (check all that apply)

- Restored through acceptance of an obliterated evidence location
- Restored through acceptance of a found perpetuated location
- Determined to be lost and reestablished through proportionate methods.  
(Show bearings and distances to PLSS corners used for proportioning)
- Restored/recovered/reestablished in a location that differs from a previously established position. (Show difference in plan view below.)
- Check here if additional information is shown on the reverse side of this form

43310320020

Describe record evidence, recovered physical evidence, occupational evidence, testimonial evidence and all other evidence considered in the recovery/restoration of corner.

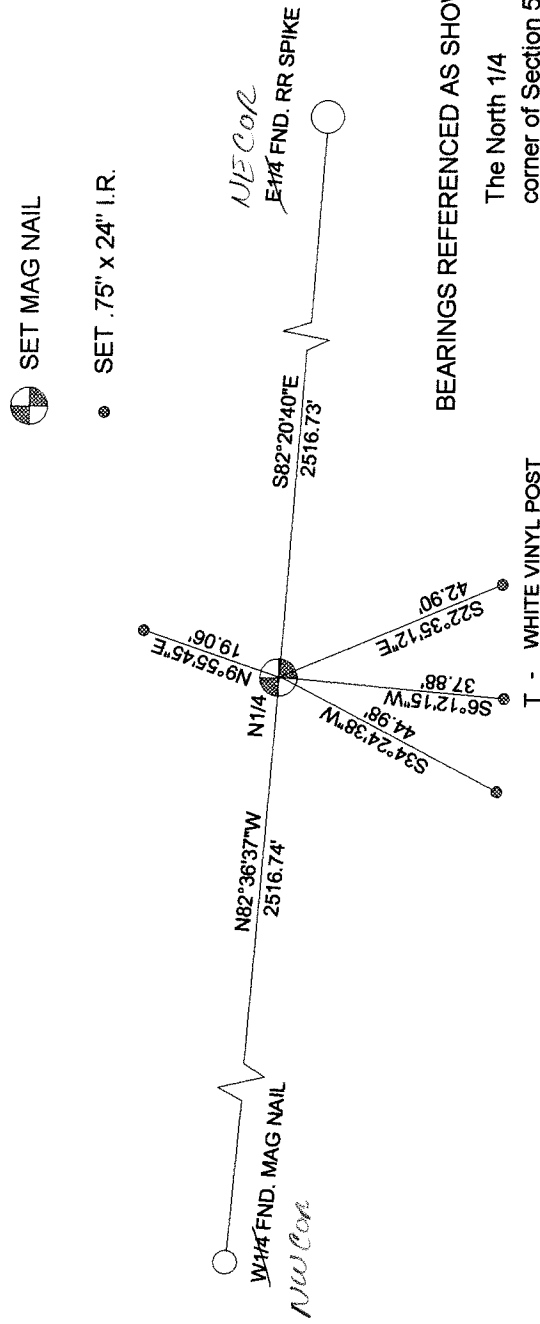
1859 - Original Corner established by Hiram C. Fellows  
West between Sec. 5/32, 40.00 set 1/4 cor.  
Original BT: Tamarac, 10", N32°E, 11 lks.  
Original BT: Tamarac, 10", S67°W, 13 lks.

2004 - Dean A. Williams and James Gardner found no history or evidence of this corner.  
Pro-rated the total distance between Section corners and held centerline of roadway as best possible original corner location.  
Accepted as best possible evidence of corner location.

Physical description of the monument set:

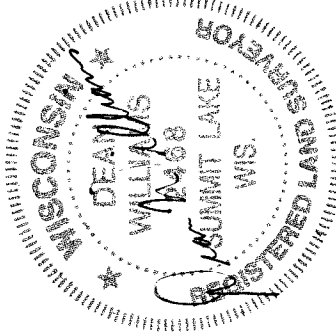
2004 - Dean A. Williams Set a MAG NAIL for Corner.  
Witnessed with .75" x 24" iron rods.

Describe the accessories used to perpetuate the location of the corner. Include a plan view drawing and indicate accessories found/set. Describe measuring point on bearing trees. Show any topographic features that would aid in future recovery of the corner.

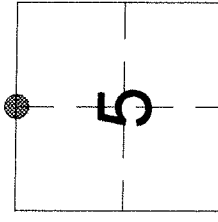


I, Dean A. Williams RLS 2468, certify that the corner location shown on this record was determined by me or under my direction and control and that this U.S. Public Land Survey Record is correct and complete to the best of my knowledge and belief.

Dean Williams 4/11/2005  
Signature Date



INDEX NO. A7  
32-10



● = Location of corner