

CERTIFIED LAND CORNER RESTORATION

Index No. A-9

32-10

State of Wisconsin }
County of LANGLADE } ss.

I, WILLIAM F. KELLY, do hereby certify that on the 15th day of DECEMBER, 1982, I found evidence of the SW corner of SECT. 33 Township 33, North, Range 10 EAST, Fourth Principal Meridian, as described hereon; and that from this evidence I established a new monument and accessories as described hereon to perpetuate the original location of this corner.

Resident witnesses:

R. Hess

History of original corner establishment:
ORIGINAL CORNER ESTABLISHED BY
HIRAM C. FELLOWS IN OCT., 1860.

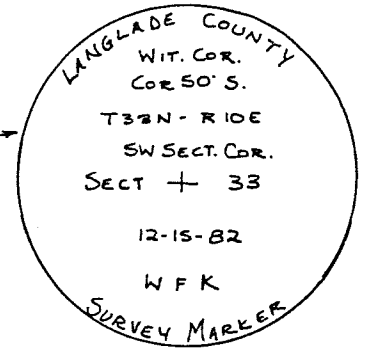
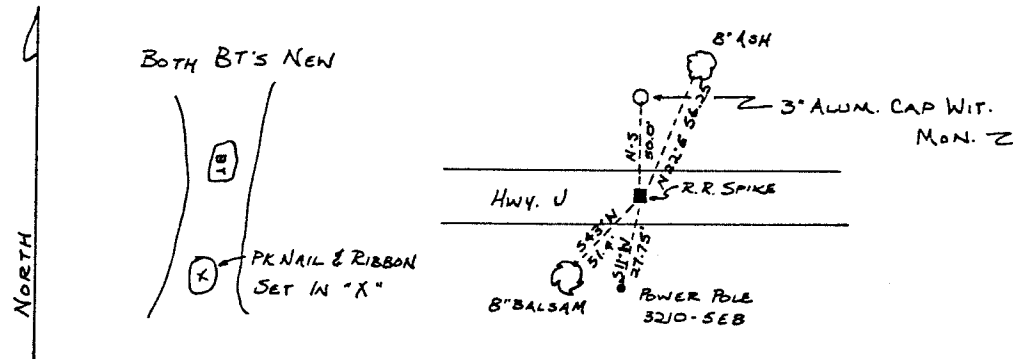
Description of corner evidence found:

CORNER EST. FROM CONTROL SURVEY OF SECT 33 T33N R10E AND OLD NOTES BY M. HUTCHINSON



William F. Kelly
12-17-82

Description of monument and accessories I established to perpetuate the original location of this corner.



Dated at ELCHO, Wis., this 15th day of DECEMBER, 1982.

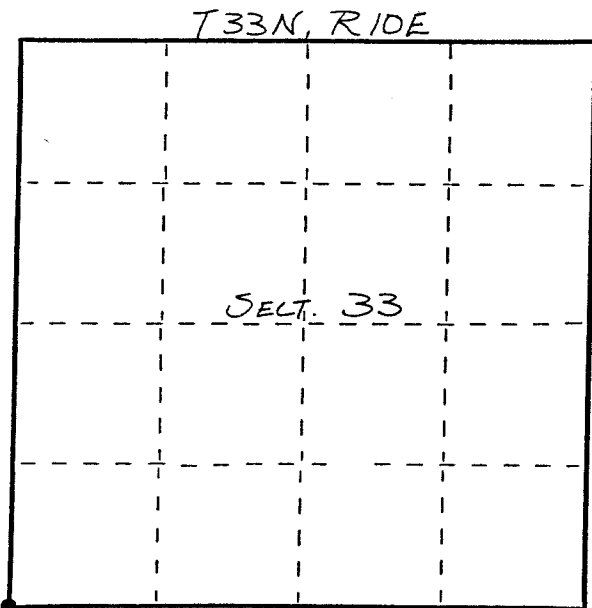
Signature William F. Kelly Title COUNTY SURVEYOR Registration No. 1098
(County Surveyor, Registered Land Surveyor, or other duly authorized official)

Office of Register of Deeds, County of _____, I hereby certify that the within instrument was filed in this office for record on the _____ day of _____, 19____ at _____ o'clock _____ M.

(Register of Deeds)

By _____ Deputy

FORM 985 M. C. MILLER CO., MILWAUKEE



○ = Corner monument restored.