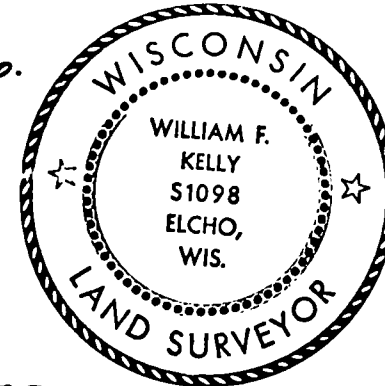


CERTIFIED LAND CORNER RESTORATION

Index No. U-9

State of Wisconsin }
County of LANGLADE } ss.

History of original corner establishment:
ORIGINAL CORNER SET BY HIRAM FELLOWS IN OCTOBER 1860.



I WILLIAM F. KELLY, do hereby certify that on the 11TH day of JANUARY, 1980, I found evidence of the SOUTH 1/8 corner of SECTION 29 & 28 Township 33, North, Range 10, Fourth Principal Meridian, as described hereon; and that from this evidence I established a new monument and accessories as described hereon to perpetuate the original location of this corner.

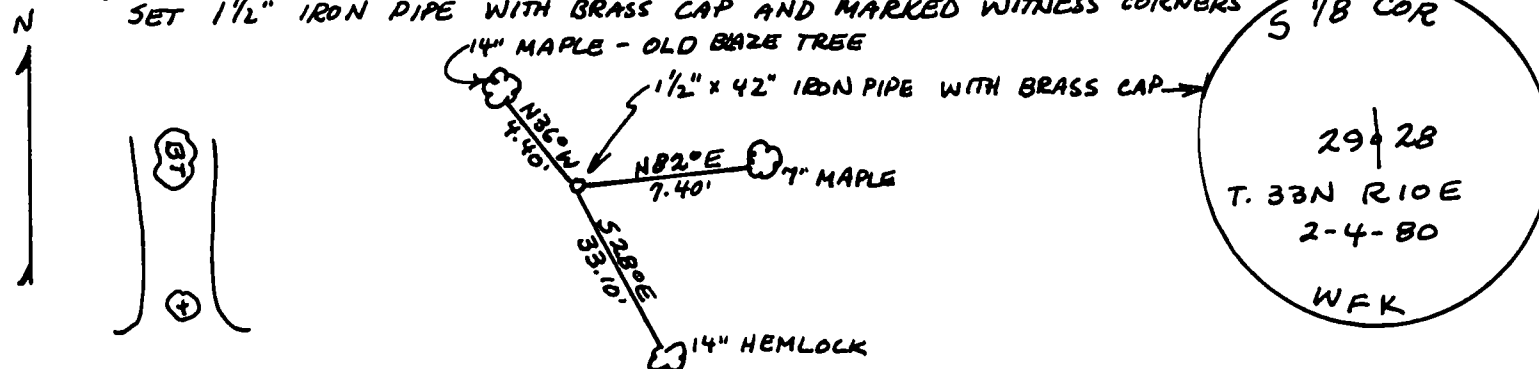
Description of corner evidence found:
LOCATED A 3x3 SCRIBED POST AND ONE OLD BEARING TREE.

William F. Kelly

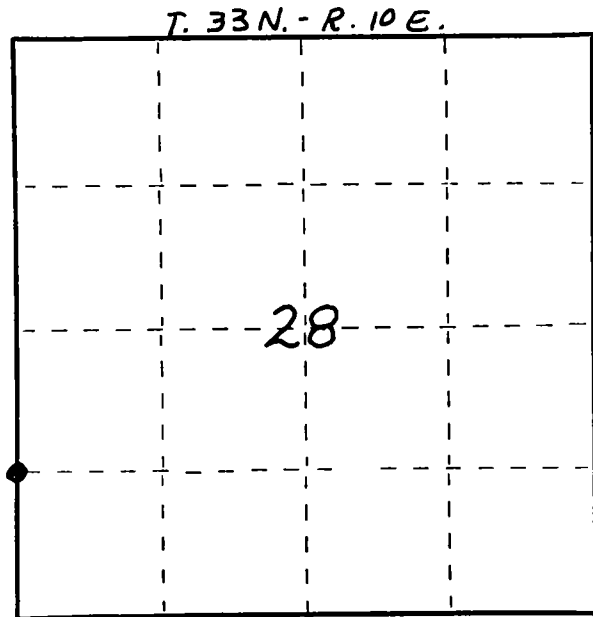
Resident witnesses:

.....
.....
.....

Description of monument and accessories I established to perpetuate the original location of this corner.



FORM 985 M & C MILLER CO. MILWAUKEE



○ = Corner monument restored.

Dated at ELCHO, Wis., this 3RD day of MARCH, 1980

Signature William F. Kelly Title COUNTY SURVEYOR Registration No. S1098
(County Surveyor, Registered Land Surveyor, or other duly authorized official)

Office of Register of Deeds, County of, I hereby certify that the within instrument was filed in this office for record on the day of, 19..... at o'clock M.

.....
(Register of Deeds)

By Deputy