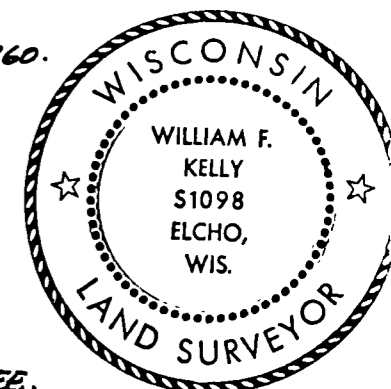


CERTIFIED LAND CORNER RESTORATION

Index No. V-9

State of Wisconsin }
County of LANGLADE } ss.

History of original corner establishment:
ORIGINAL CORNER SET BY HIRAM FELLOWS IN OCTOBER 1860.

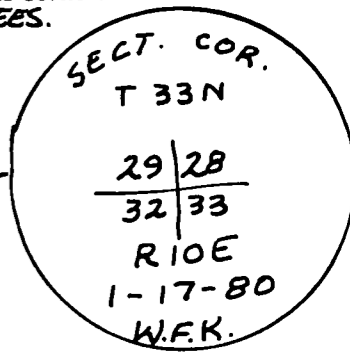
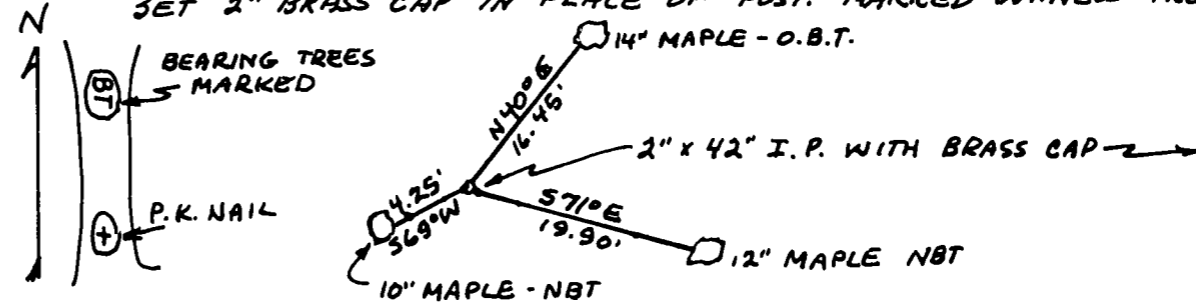
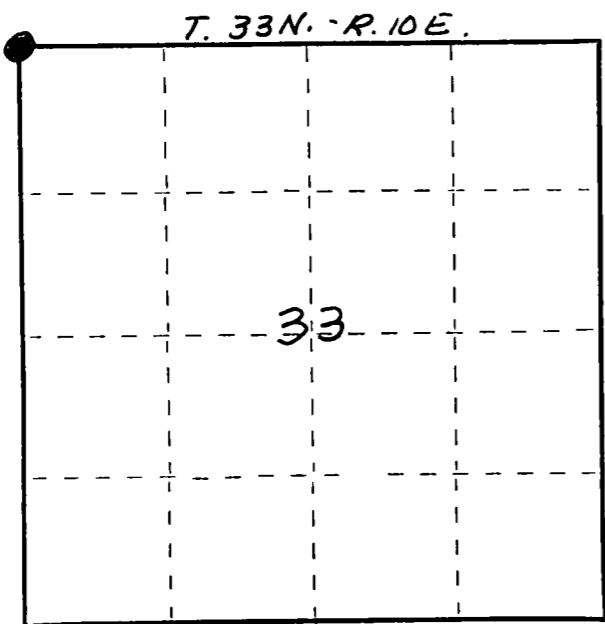


I WILLIAM F. KELLY, do hereby certify that on the 11TH day of JANUARY, 1980, I found evidence of the N.W. SECTION corner of SECTION 33 Township 33, North, Range 10E, Fourth Principal Meridian, as described hereon; and that from this evidence I established a new monument and accessories as described hereon to perpetuate the original location of this corner.

Description of corner evidence found:
LOCATED A 4x4 CEDAR POST AND ONE OLD BEARING TREE. EST. BY GENISOT ENGINEERING OF RHINELANDER. POST IDENTIFIED BY RESIDENT WITNESS AS SECTION CORNER. *William F. Kelly*

Resident witnesses:
.....
.....
.....

Description of monument and accessories I established to perpetuate the original location of this corner.
SET 2" BRASS CAP IN PLACE OF POST. MARKED WITNESS TREES.



Dated at ELCHO, Wis., this 17TH day of JANUARY, 1980

Signature William F. Kelly Title COUNTY SURVEYOR Registration No. 51098
(County Surveyor, Registered Land Surveyor, or other duly authorized official)

Office of Register of Deeds, County of, I hereby certify that the within instrument was filed in this office for record on the day of, 19..... at o'clock M.

.....
(Register of Deeds)

By..... Deputy

○ = Corner monument restored.

FORM 983 M. C. MILLER CO., MILWAUKEE