

CERTIFIED LAND CORNER RESTORATION

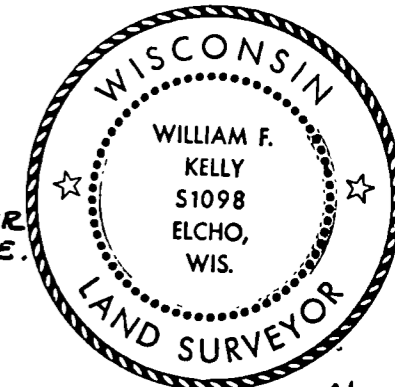
Index No. T-12

State of Wisconsin }  
County of LANGLADE } ss.

History of original corner establishment:  
NO EVIDENCE OF ANY PREVIOUS CORNER ESTABLISHMENT WAS FOUND.

I WILLIAM F. KELLY do hereby certify that on the 14TH day of MARCH, 1980, I found evidence of the E 1/8 ON E-W 1/4 LINE corner of SECTION 28 Township 33 North, Range 10 EAST, Fourth Principal Meridian, as described hereon; and that from this evidence I established a new monument and accessories as described hereon to perpetuate the original location of this corner.

Description of corner evidence found:  
SET CORNER AT MID-POINT BETWEEN THE EAST 1/4 CORNER AND CENTER 1/4 CORNER OF SECTION 28 T.33N.-R.10E.

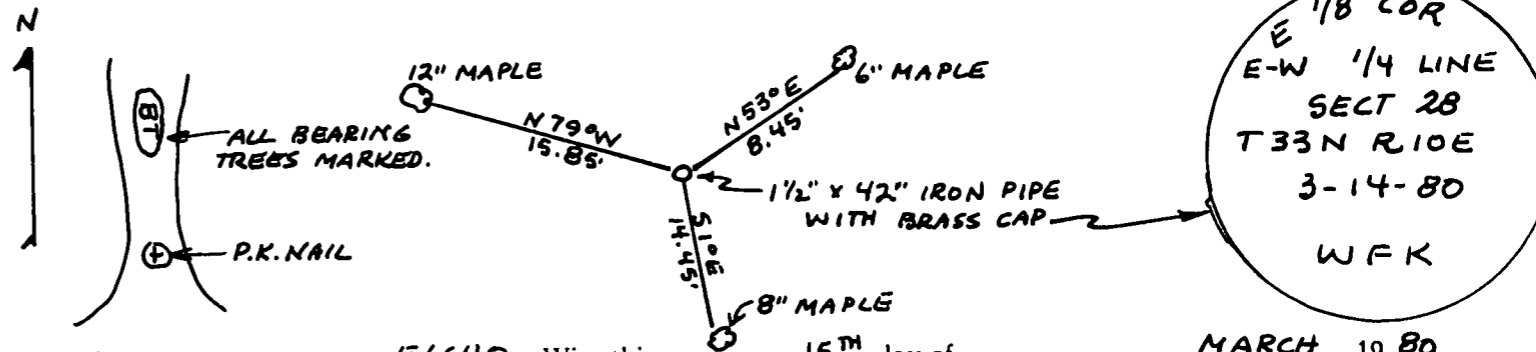
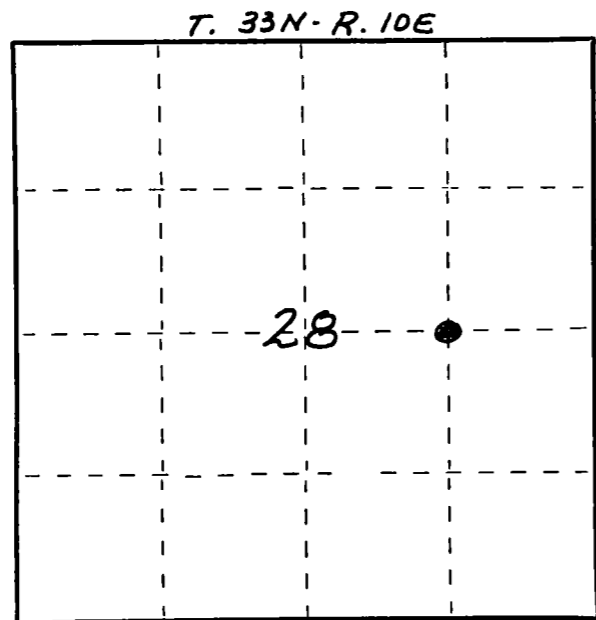


William F. Kelly

Resident witnesses:

Description of monument and accessories I established to perpetuate the original location of this corner.  
SET 1 1/2" IRON PIPE WITH BRASS CAP AND MARKED WITNESS TREES.

FORM 985 H. C. MILLER CO., MILWAUKEE



Dated at ELCHO, Wis., this 15TH day of MARCH, 1980.

Signature William F. Kelly Title COUNTY SURVEYOR Registration No. 51098  
(County Surveyor, Registered Land Surveyor, or other duly authorized official)

Office of Register of Deeds, County of \_\_\_\_\_, I hereby certify that the within instrument was filed in this office for record on the \_\_\_\_\_ day of \_\_\_\_\_, 19\_\_\_\_ at \_\_\_\_\_ o'clock \_\_\_\_\_ M.

(Register of Deeds)

By \_\_\_\_\_ Deputy

○ = Corner monument restored.