

CERTIFIED LAND CORNER RESTORATION

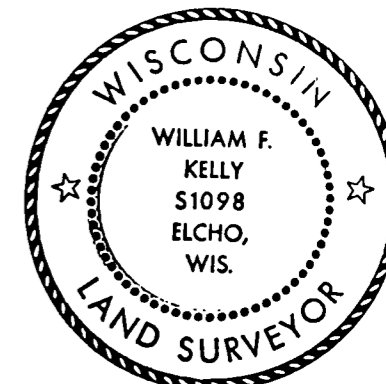
Index No. U-13

State of Wisconsin }
 County of LANGLADE } ss.

History of original corner establishment:
ORIGINAL CORNER ESTABLISHED BY HIRAM FELLOWS IN OCTOBER 1860.

I WILLIAM F. KELLY, do hereby certify that on the 14TH day of MARCH, 1980, I found evidence of the SOUTH 1/8 corner of SECTION 28 & 27 Township 33, North, Range 10 EAST, Fourth Principal Meridian, as described hereon; and that from this evidence I established a new monument and accessories as described hereon to perpetuate the original location of this corner.

Description of corner evidence found:
CORNER RESET AT MID-POINT BETWEEN SECTION CORNER AND 1/4 SECTION CORNER.

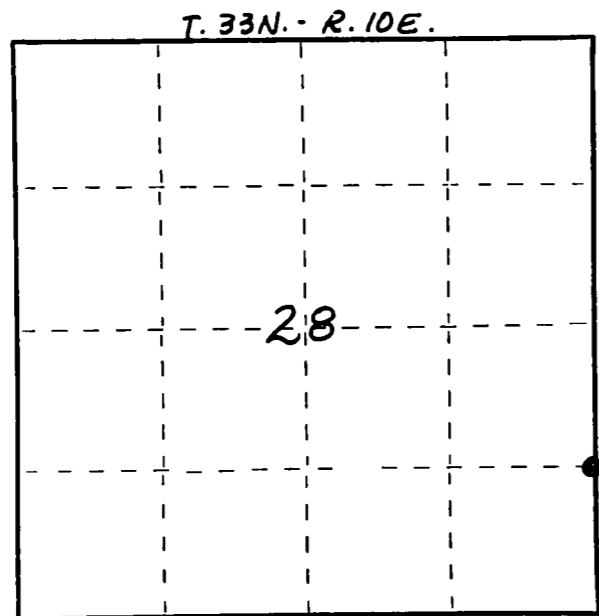
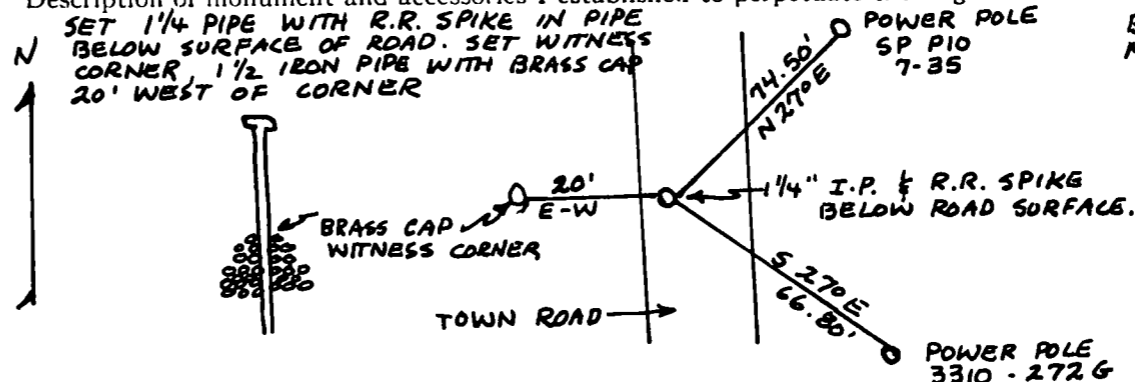


William F. Kelly

Resident witnesses:

.....

Description of monument and accessories I established to perpetuate the original location of this corner.



○ = Corner monument restored.

Dated at ELCHO, Wis., this 15TH day of MARCH, 1980

Signature William F. Kelly Title COUNTY SURVEYOR Registration No. S1098
 (County Surveyor, Registered Land Surveyor, or other duly authorized official)

Office of Register of Deeds, County of, I hereby certify that the within instrument was filed in this office for record on the day of, 19..... at o'clock M.

(Register of Deeds)

By Deputy