

CERTIFIED LAND CORNER RESTORATION

Index No. V-12

State of Wisconsin }
County of LANGLADE } ss.

History of original corner establishment:
ORIGINAL CORNER SET BY HIRAM FELLOWS IN OCTOBER 1860.

I WILLIAM F. KELLY, do hereby certify that on the 25TH day of FEBRUARY, 1980, I found evidence of the EAST 1/8 corner of SECTION 28 & 33 Township 33, North, Range 10 EAST, Fourth Principal Meridian, as described hereon; and that from this evidence I established a new monument and accessories as described hereon to perpetuate the original location of this corner.



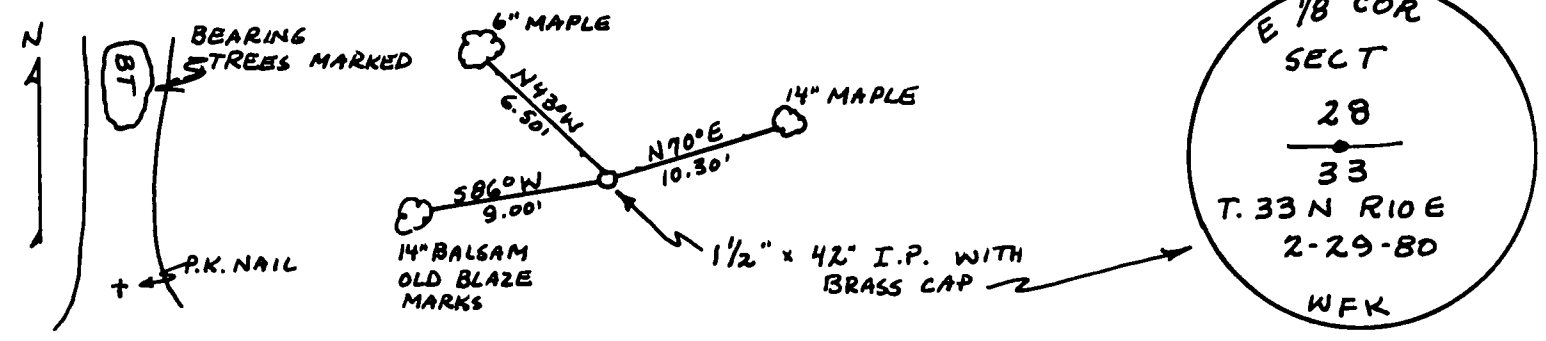
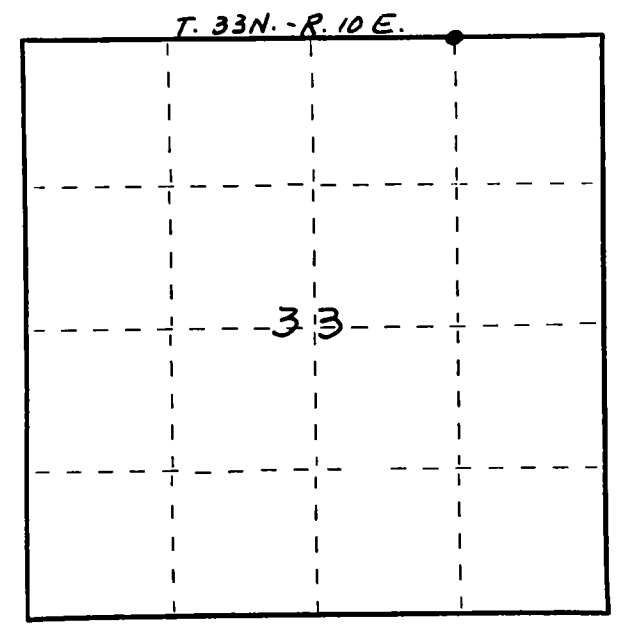
William F. Kelly

Description of corner evidence found:
LOCATED ONE BALSAM TREE WITH AXE MARKS.

Resident witnesses:
ROBERT HESS SR.

CORNER SET AT MID POINT BETWEEN SECTION CORNER AND 1/4 SECTION CORNER.

Description of monument and accessories I established to perpetuate the original location of this corner.



Dated at ELCHO, Wis., this 14TH day of MARCH, 1980

Signature William F. Kelly Title COUNTY SURVEYOR Registration No. S1098
(County Surveyor, Registered Land Surveyor, or other duly authorized official)

Office of Register of Deeds, County of _____, I hereby certify that the within instrument was filed in this office for record on the _____ day of _____, 19____ at _____ o'clock _____ M.

(Register of Deeds)

By _____ Deputy

○ = Corner monument restored.

FORM 985 H. C. MILLER CO., MILWAUKEE