

LANGLADE COUNTY U.S. PUBLIC LAND CORNER RESTORATION

The Center of Section 27, T. 33 N., R. 10 E., Langlade County, WI.

Corner was: (check all that apply)

4331027 2020

- Restored through acceptance of an obliterated evidence location.
- Restored through acceptance of a found perpetuated location.
- Determined to be lost and re-established through proportionate methods.
- Show bearings and distances to PLSS corners used for proportioning, and show original distances).
- Restored/recovered/re-established in a location that differs from a previously established position.
- (Show difference in plan view below).
- Check here if additional information is shown on the reverse side of this form.

Describe record evidence, recovered physical evidence, occupational evidence, testimonial evidence and all other evidence considered in the recovery/restoration of the corner.

11/01/2001 D. Tlusty. This corner was established at the intersection of quarter lines as shown below.

Physical description of the monument set:

To mark the corner, I set a 2" x 30" flared bottom iron pipe with 3 1/4" dia. brass cap, top of which is 0.3' above ground. Monument is on the SW side of a 1' x 1' rock.

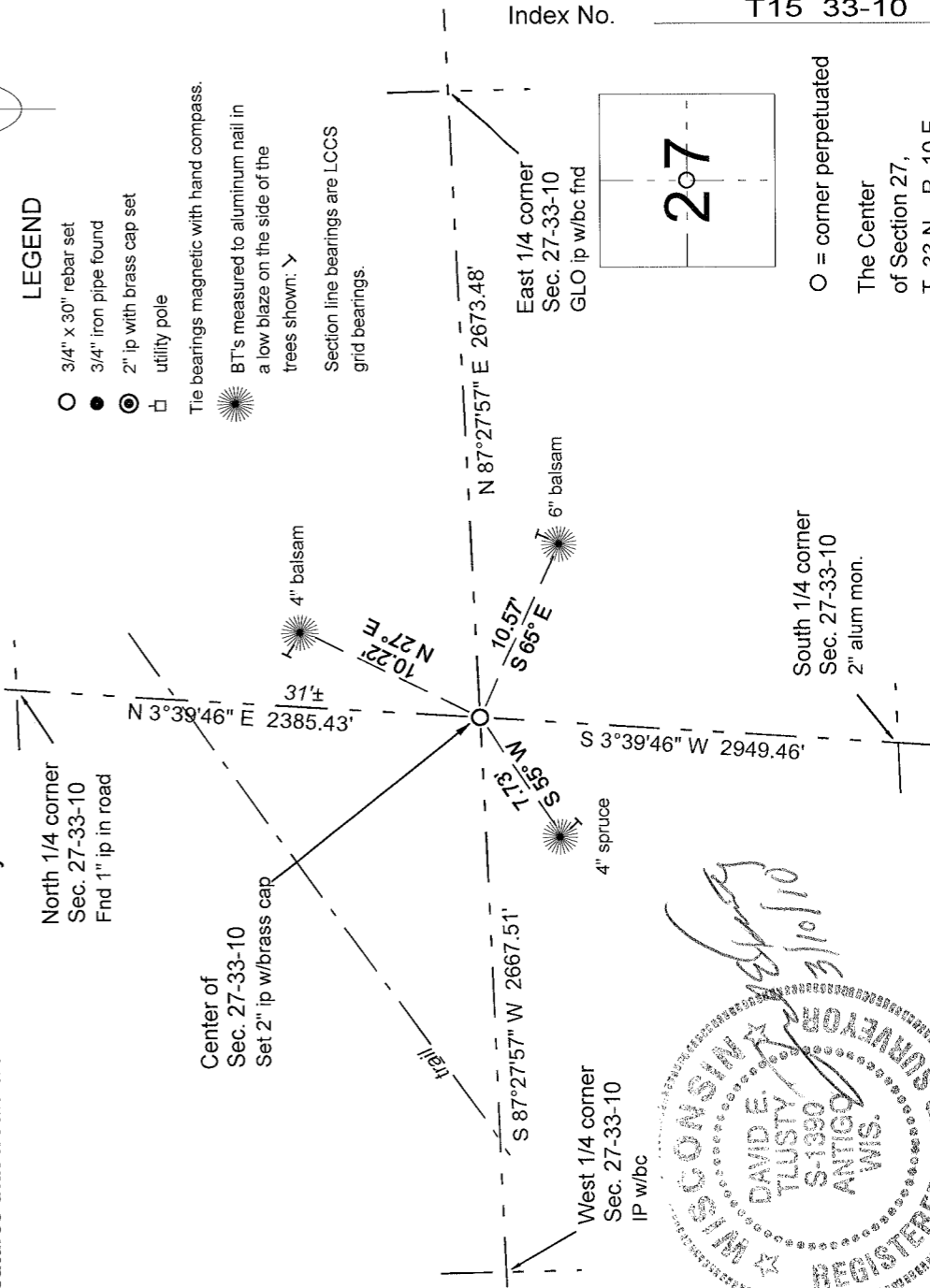
Set a white vinyl sign post 0.3' north of the corner monument.

Describe the accessories used to perpetuate the corner. Include a plan view drawing and accessories found/set. Describe measuring point on bearing trees. Show any topographic features that would aid in future recovery of the corner.

FB17-115



- LEGEND**
- 3/4" x 30" rebar set
 - 3/4" iron pipe found
 - 2" ip with brass cap set
 - utility pole
- Tie bearings magnetic with hand compass.
- BT's measured to aluminum nail in a low blaze on the side of the trees shown: >
- Section line bearings are LCCS grid bearings.



I, David E. Tlusty, Registered Land Surveyor, as Langlade County Surveyor, certify that the corner location on this record was determined by me and that this U.S. Public Land Survey Monument Record is correct to the best of my knowledge and belief.