

CERTIFIED LAND CORNER RESTORATION

Index No. T-19

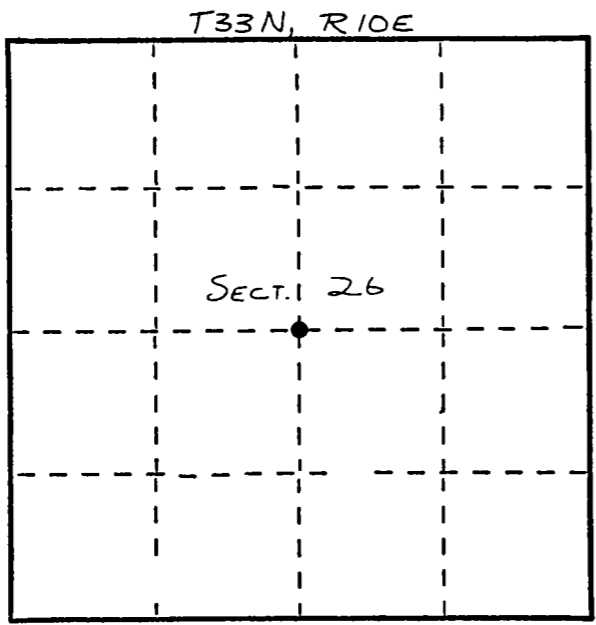
State of Wisconsin } ss.  
County of LANGLADE

I, WILLIAM F. KELLY, do hereby certify that on the 23<sup>RD</sup> day of MARCH, 1982, I found evidence of the CENTER corner of SECT. 26 Township 33, North, Range 10 EAST, Fourth Principal Meridian, as described hereon; and that from this evidence I established a new monument and accessories as described hereon to perpetuate the original location of this corner.

Resident witnesses:

.....  
.....  
.....

FORM 985 M. G. MILLER CO., MILWAUKEE



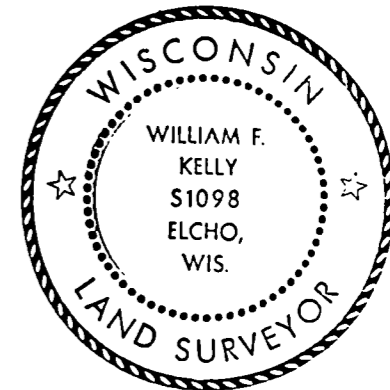
○ = Corner monument restored.

History of original corner establishment:

ORIGINAL CORNER NOT ESTABLISHED DURING ORIGINAL GOV'T SURVEY.

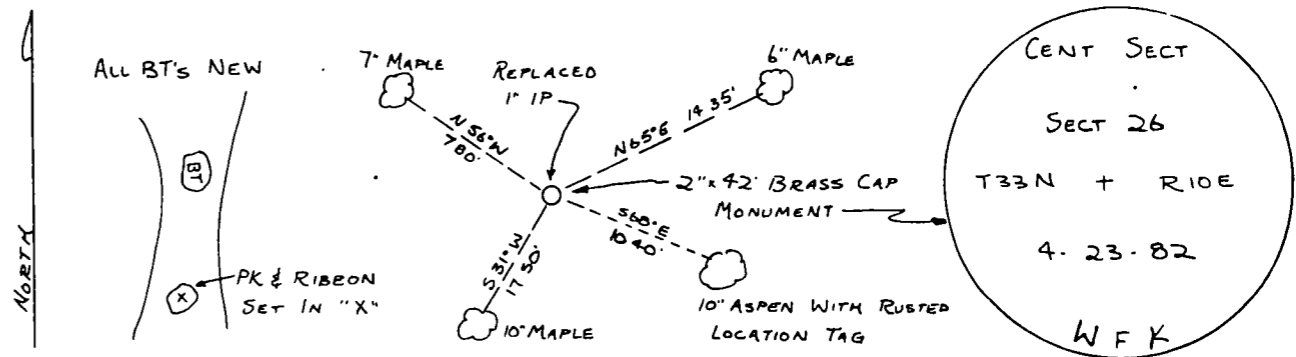
Description of corner evidence found:

FOUND 1" IRON PIPE AND LOCATION TAG ON ASPEN REPLACED IP WITH 2"x42" BLACK IRON PIPE WITH BRASS CAP MON SCRIBED 3 NEW BT'S.



*William F. Kelly*

Description of monument and accessories I established to perpetuate the original location of this corner.



Dated at ELCHO, Wis., this 23<sup>RD</sup> day of MARCH, 1982

Signature William F. Kelly Title COUNTY SURVEYOR Registration No. 1098  
(County Surveyor, Registered Land Surveyor, or other duly authorized official)

Office of Register of Deeds, County of....., I hereby certify that the within instrument was filed in this office for record on the..... day of....., 19..... at..... o'clock..... M.

.....  
(Register of Deeds)

By..... Deputy