

CERTIFIED LAND CORNER RESTORATION

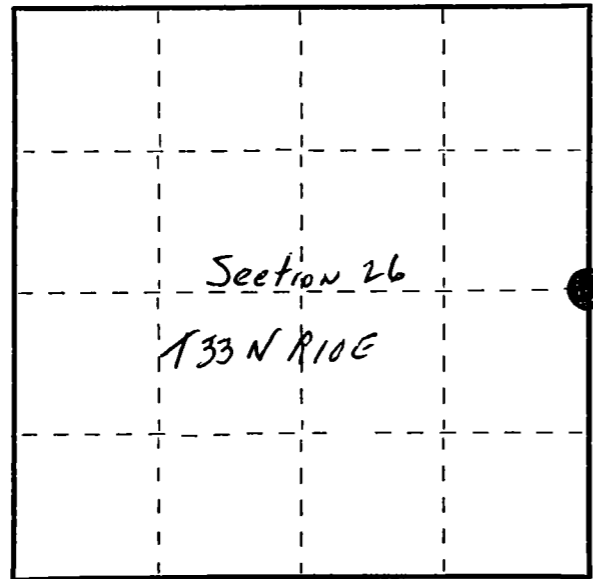
Index No. T-21

State of Wisconsin }
County of Langlade } ss.

I, Raymond J. Hallsy, do hereby certify that on the 5th day of April, 1980, I found evidence of the 1/4 corner of 25 & 26 Township 33, North, Range 10E, Fourth Principal Meridian, as described hereon; and that from this evidence I established a new monument and accessories as described hereon to perpetuate the original location of this corner.

Resident witnesses:

.....
.....
.....



○ = Corner monument restored.

History of original corner establishment:

Corner set in the Dependent resurvey in 1930.

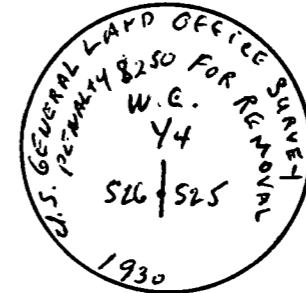
Description of corner evidence found:

2" iron pipe with brass cap as a witness corner S20°37'W .17 lks on edge of lake.

Description of monument and accessories I established to perpetuate the original location of this corner.

New BT's to witness corner

4" Tamarack S47E 7'6"
3" Spruce N32E 11'3"
5" Tamarack S75E 41'



Dated at Antigo, Wis., this 5th day of April, 1980.

Signature: Raymond J. Hallsy Title: Land Surveyor Registration No. 5685
(County Surveyor, Registered Land Surveyor, or other duly authorized official)

Office of Register of Deeds, County of _____, I hereby certify that the within instrument was filed in this office for record on the _____ day of _____, 19____ at _____ o'clock _____ M.

(Register of Deeds)

By _____ Deputy

FORM 985 R C MILLER CO., MILWAUKEE