

CERTIFIED LAND CORNER RESTORATION

Index No. T-4-21

33-10

State of Wisconsin }  
County of Langlade } ss.

I, Raymond J. Hallisy, do hereby certify that on the 3rd day of June, 1978, I found evidence of the XXXX M. C. corner of Section 25 & 26 Township 33 North, Range 10E, Fourth Principal Meridian, as described hereon; and that from this evidence I established a new monument and accessories as described hereon to perpetuate the original location of this corner.

Resident witnesses:

.....  
.....  
.....

History of original corner establishment:

Established in the Dependent Resurvey and Extension Survey in 1931, of Sections 26, 35, & 36.

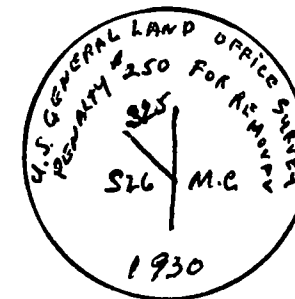
Description of corner evidence found:

3" Brass Cap in 6" Cement post.

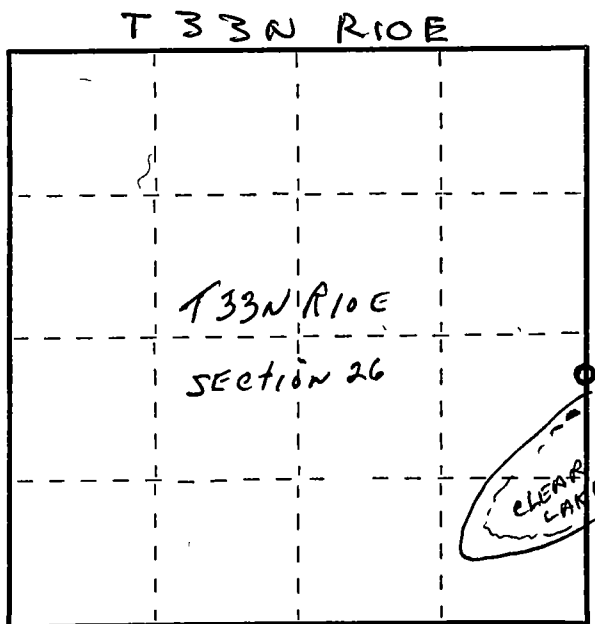
Description of monument and accessories I established to perpetuate the original location of this corner.

New BT's

White Pine 6" S70W 6' 5"  
Hard Maple 6" S63W 18' 4"  
White Birch 5" N15E 11' 3"



FORM 985 W. C. MILLER CO., MILWAUKEE



○ = Corner monument restored.

Dated at Antigo, Wis., this 3rd day of June, 1978

Signature: Raymond J. Hallisy Title: Land Surveyor Registration No. S-685  
(County Surveyor, Registered Land Surveyor, or other duly authorized official)

Office of Register of Deeds, County of \_\_\_\_\_, I hereby certify that the within instrument was filed in this office for record on the \_\_\_\_\_ day of \_\_\_\_\_, 19\_\_\_\_ at \_\_\_\_\_ o'clock \_\_\_\_\_ M.

(Register of Deeds)

By \_\_\_\_\_ Deputy