

# LANGLADE COUNTY U.S. PUBLIC LAND CORNER RESTORATION

The Southeast corner of Section 26, T. 33 N., R. 10 E., Langlade County, WI.

**Corner was: (check all that apply)**

- Restored through acceptance of an obliterated evidence location.
- Restored through acceptance of a found perpetuated location.
- Determined to be lost and re-established through proportionate methods.
- Show bearings and distances to PLSS corners used for proportioning, and show original distances).
- Restored/recovered/re-established in a location that differs from a previously established position.
- (Show difference in plan view below).
- Check here if additional information is shown on the reverse side of this form.

4331026 0000

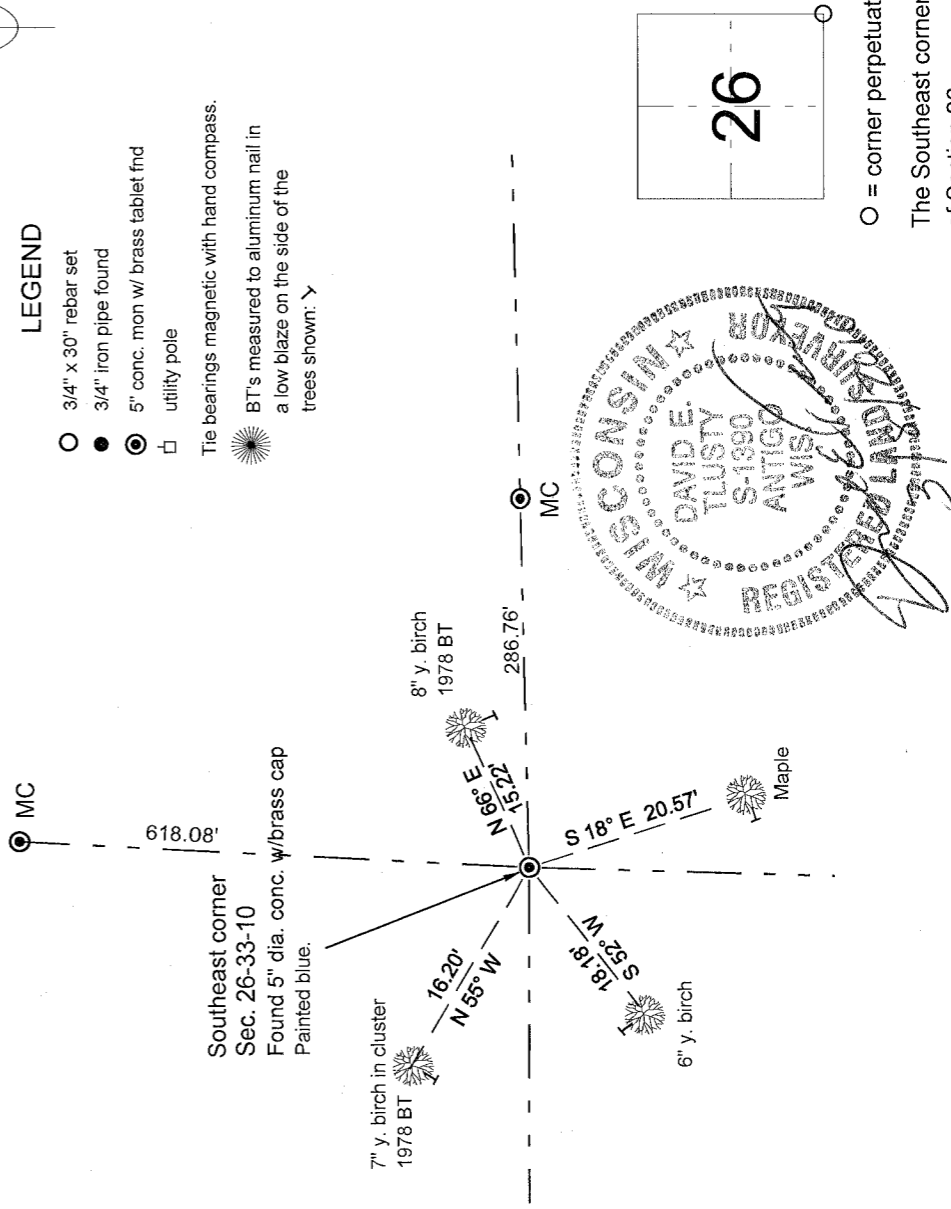
**Describe record evidence, recovered physical evidence, occupational evidence, testimonial evidence and all other evidence considered in the recovery/restoration of the corner.**

In 1860, original surveyor Hiram Fellows said: "Orig. corner in lake." In 1930, the GLO completed a Dependent resurvey and extension survey in Section 25. They determined this corner was 'lost' and re-established it by proportioning. Set a concrete monument, 2 ft. long, 5" dia. with brass tablet embedded in the top. In 1978, Ray Hallisy found the concrete monument. He marked and measured 3 new bearing trees. 09/15/1999 D. Tlusty found the concrete monument and Hallisys bearing trees. Measured trees and marked new as shown below.

**Physical description of the monument set:**

For the corner, I left the existing 5" dia. concrete monument with brass tablet in place. I set two green steel sign posts: North, 2.5'± and east, 2.5'± from the corner monument.

**Describe the accessories used to perpetuate the corner. Include a plan view drawing and accessories found/set. Describe measuring point on bearing trees. Show any topographic features that would aid in future recovery of the corner.**



Index No. V21 33-10

I, David E. Tlusty, Registered Land Surveyor, as Langlade County Surveyor, certify that the corner location on this record was determined by me and that this U.S. Public Land Survey Monument Record is correct to the best of my knowledge and belief.