

CERTIFIED LAND CORNER RESTORATION

Index No. V-21

State of Wisconsin }
County of Lafayette } ss.

History of original corner establishment:

I Raymond J. Hallisy, do hereby certify that on the 3rd day of June, 1978, I found evidence of the Section 25, 26, 35, & 36 corner of Township 33, North, Range 10E, Fourth Principal Meridian, as described hereon; and that from this evidence I established a new monument and accessories as described hereon to perpetuate the original location of this corner.

Description of corner evidence found:

3" Brass Cap set in ~~1/4" 6" Cement Post, Rock Found.~~

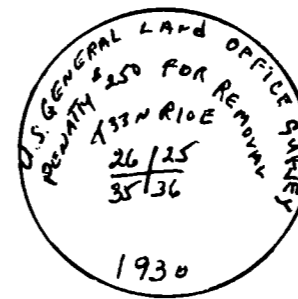
Resident witnesses:

.....
.....
.....

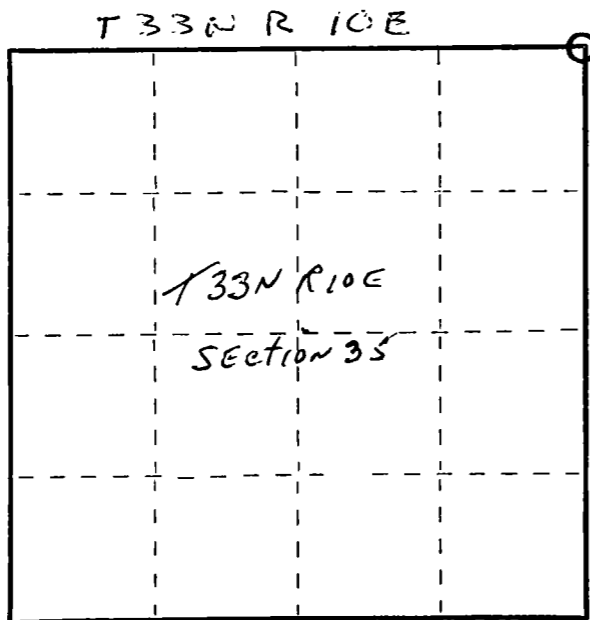
Description of monument and accessories I established to perpetuate the original location of this corner.

New PT's

Yellow Birch N55E 14' 11"
Red Maple S23E 20' 3"
Yellow Birch N50W 16' 9"



FORM 985 H. C. MILLER CO., MILWAUKEE



○ = Corner monument restored.

Dated at Antigo, Wis., this 3rd day of June, 1978.

Signature Raymond J. Hallisy Title Land Surveyor Registration No. S-685
(County Surveyor, Registered Land Surveyor, or other duly authorized official)

Office of Register of Deeds, County of Lafayette, I hereby certify that the within instrument was filed in this office for record on the 3rd day of June, 1978 at 10:00 o'clock A. M.

.....
(Register of Deeds)

By..... Deputy